

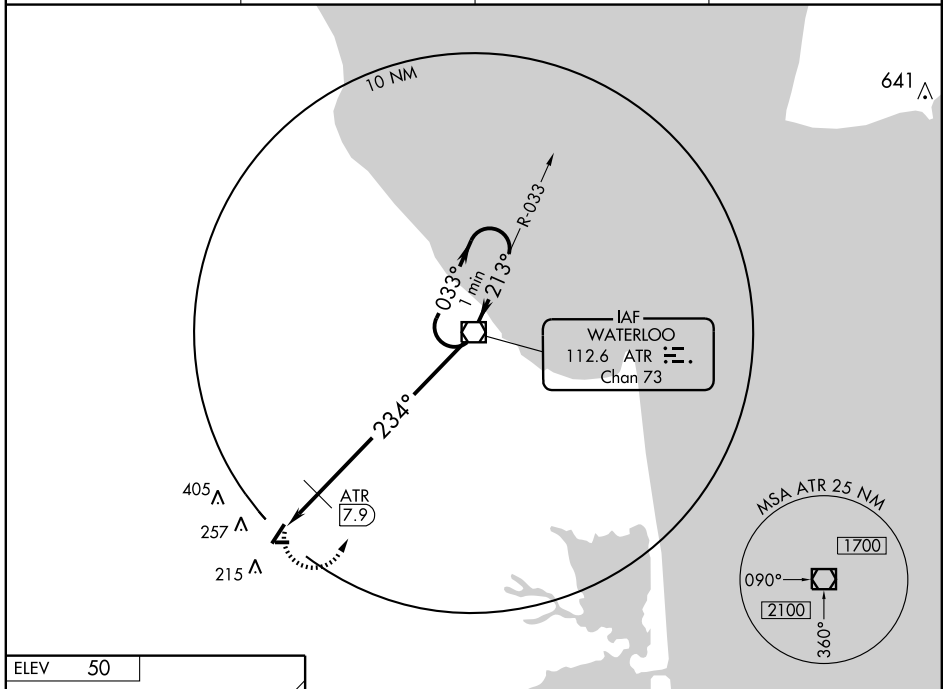
VOR RWY 22

GEORGETOWN / SUSSEX COUNTY (GED)

VOR/DME ATR	APP CRS	Rwy Idg	5000
112.6	234°	TDZE	50
Chan 73		Apt Elev	50

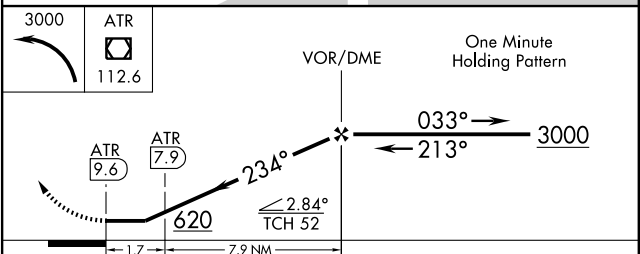
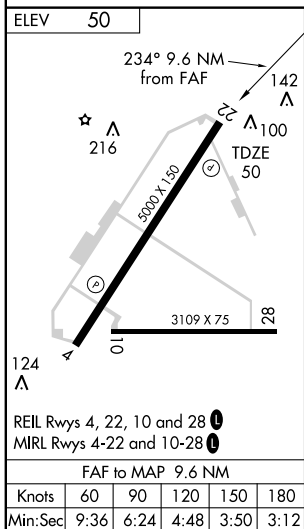
<p>▽ NA</p> <p>▲ NA</p>		<p>MISSED APPROACH: Climbing left turn to 3000 direct ATR VOR/DME and hold.</p>	
-------------------------	--	---	--

ASOS	DOVER APP CON	CLNC DEL	UNICOM
118.375	132.425 257.875	125.55	123.0 (CTAF) 0



NE-3, 22 OCT 2009 to 19 NOV 2009

NE-3, 22 OCT 2009 to 19 NOV 2009



CATEGORY	A	B	C	D
S-22	620-1	570 (600-1)	620-1½ 570 (600-1½)	620-1¾ 570 (600-1¾)
CIRCLING	620-1	570 (600-1)	620-1½ 570 (600-1½)	620-2 570 (600-2)
DME MINIMUMS				
S-22	440-1 390 (400-1)			440-1¼ 390 (400-1¼)
CIRCLING	580-1	530 (600-1)	600-1½ 550 (600-1½)	600-2 550 (600-2)