

# RNAV (GPS) RWY 4

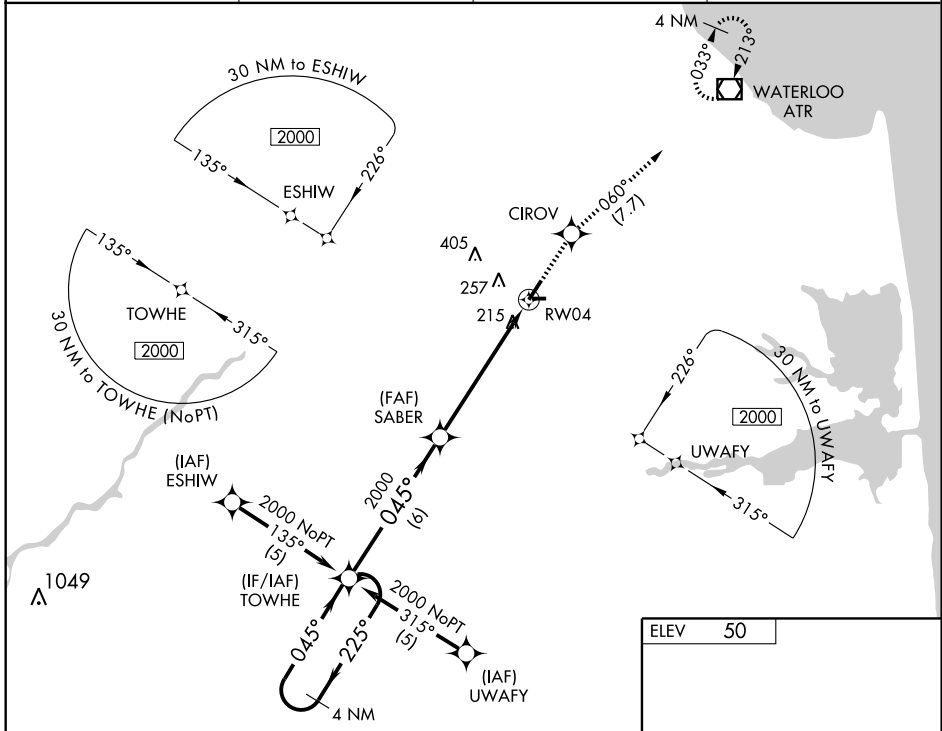
GEORGETOWN / SUSSEX COUNTY (G.ED)

WAAS CH <b>65621</b> <b>W04A</b>	APP CRS <b>045°</b>	Rwy Idg <b>5000</b> TDZE <b>50</b> Apt Elev <b>50</b>
--	------------------------	---

**▼** DME/DME RNP-0.3 NA. Baro-VNAV NA below -15°C (5°F). If local altimeter setting not received, use Salisbury-Ocean City Wicomico Rgnl altimeter setting and increase all DAs/MDAs 60 feet. Baro-VNAV NA when using Salisbury-Ocean City Wicomico Rgnl altimeter setting.

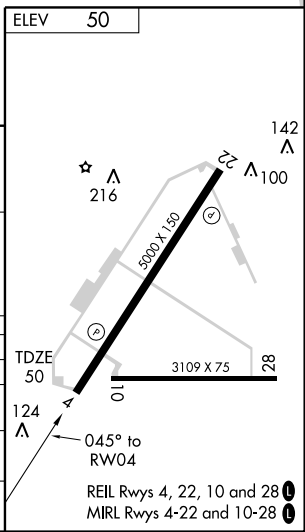
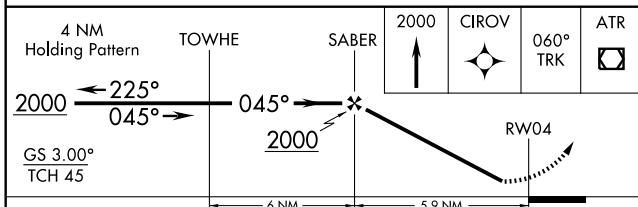
**MISSED APPROACH:** Climb to 2000 direct CIROV and via 060° track to ATR VOR/DME and hold.

ASOS <b>118.375</b>	DOVER APP CON <b>132.425 257.875</b>	CLNC DEL <b>125.55</b>	UNICOM <b>123.0 (CTAF)</b>
------------------------	---	---------------------------	-------------------------------



NE-3, 22 OCT 2009 to 19 NOV 2009

NE-3, 22 OCT 2009 to 19 NOV 2009



CATEGORY	A	B	C	D
LPV DA		470-1½	420 (500-1½)	
LNAV/VNAV DA		520-1¾	470 (500-1¾)	
LNAV MDA	480-1	430 (500-1)	480-1¼ 430 (500-1¼)	480-1½ 430 (500-1½)
CIRCLING	560-1¾	510 (600-1¾)	600-1¾ 550 (600-1¾)	600-2 550 (600-2)

REIL Rwy 4, 22, 10 and 28  
MIRL Rwy 4-22 and 10-28