

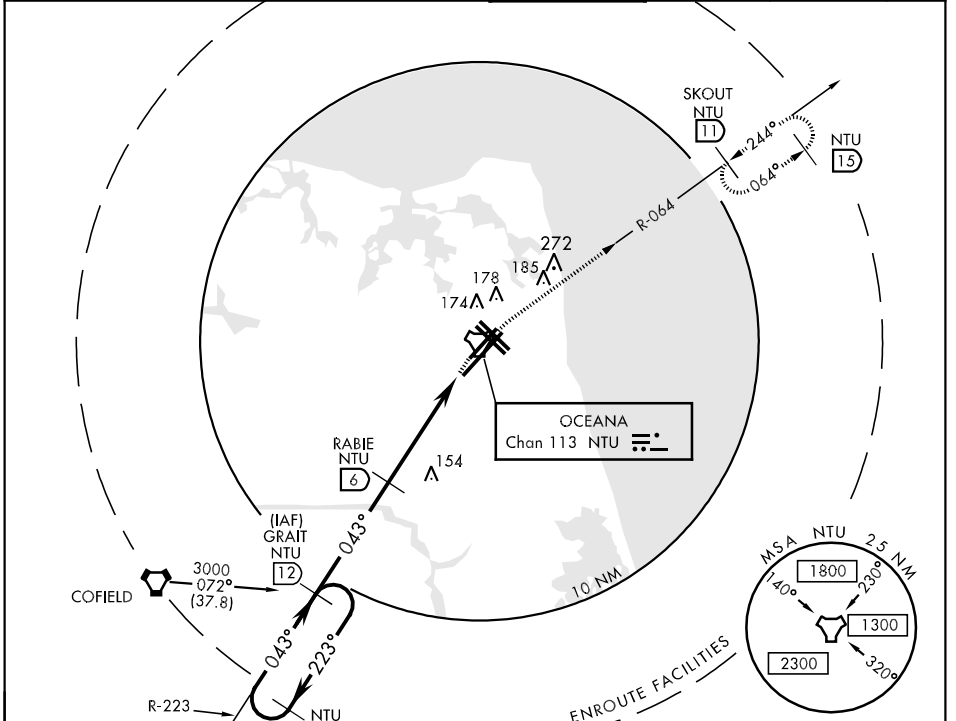
TACAN NTU Chan 113	APCH CRS 043°	Rwy Idg 5L 8001 5R 12,000 TDZE 5L 21 5R 20 Arpt Elev 23	AL-934 [USN]
			OCEANA NAS (APOLLO SOUCEK FIELD) (KNTU)

*When ALS inop, increase vis CAT ABC to 1 mile, CAT D to 1½ miles.
 **When ALS inop, increase vis CAT ABCD to ½ mile.

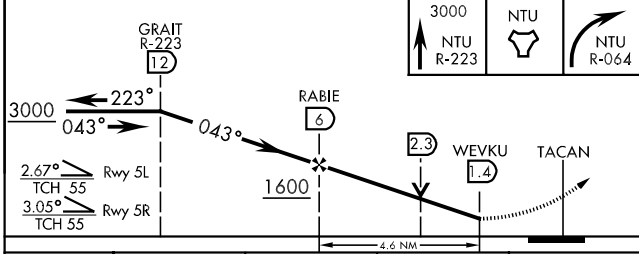
 ALSF-1

 MISSED APPROACH: Climb to 3000 via R-223 to NTU TACAN then via R-064 to SKOUT and hold.

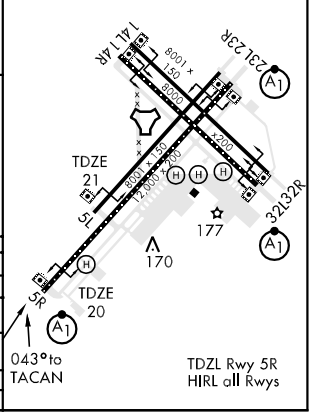
ATIS 317.6	OCEANA APP CON 119.6 288.3 NORTH (NTU R-360 to R-150) 123.9 266.8 SOUTH (NTU R-151 to R-359)	OCEANA TOWER 127.075 360.2	GND CON 336.4	CLNC DEL 254.4	ASR PAR
----------------------	--	--------------------------------------	-------------------------	--------------------------	---------



EMERG SAFE ALT 100 NM 2600 ELEV 23



CATEGORY	A	B	C	D
S-5R*	420-½	400 (400-½)	420-¾	400 (400-¾)
S-5L	420-1	399 (400-1)	420-1¼	399 (400-1¼)
CIRCLING	480-1	457 (500-1)	480-1½	580-2
S-PAR 5R**	120-¼	100 (100-¼)	457 (500-1½)	557 (600-2)
S-PAR 5L	121-½	100 (100-½)	GS 3.00°	GS 3.00°



NE-3, 22 OCT 2009 to 19 NOV 2009

NE-3, 22 OCT 2009 to 19 NOV 2009