

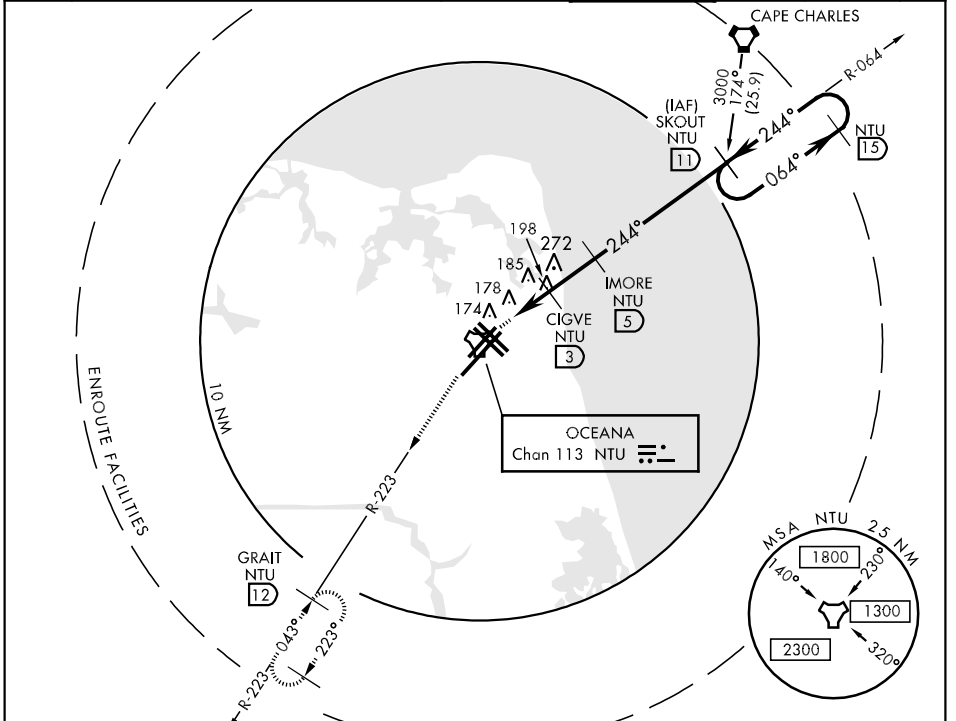
TACAN NTU Chan 113	APCH CRS 244°	Rwy Idg 23L 12,000 23R 8001 TDZE 23L 22 23R 21 Arpt Elev 23	AL-934 [USN] OCEANA NAS (APOLLO SOUCEK FIELD) (KNTU)
-----------------------	------------------	---	---

▼ \*When ALS inop, increase vis CAT AB to 1 mile, CAT CD to 1½ miles.  
 \*\*When ALS inop, increase vis CAT ABCD to ½ mile.



MISSED APPROACH: Climb to 3000 via R-064 to NTU TACAN then via R-223 to GRAIT and hold.

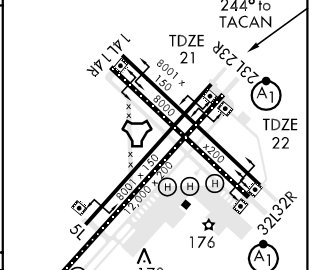
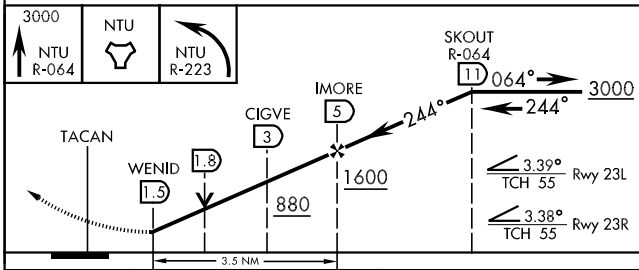
ATIS 317.6	OCEANA APP CON 119.6 288.3 NORTH (NTU R-360 to R-150) 123.9 266.8 SOUTH (NTU R-151 to R-359)	NORFOLK APP CON 126.05 372.1	OCEANA TOWER 127.075 360.2	GND CON 336.4	CLNC DEL 254.4	ASR PAR
---------------	--	---------------------------------	-------------------------------	------------------	-------------------	---------



NE-3, 22 OCT 2009 to 19 NOV 2009

NE-3, 22 OCT 2009 to 19 NOV 2009

EMERG SAFE ALT 100 NM 2600 ELEV 23



CATEGORY	A	B	C	D
S-23L *	440-½ 418 (500-½)		440-¾ 418 (500-¾)	
S-23R	440-1 419 (500-1)		440-1½ 419 (500-1½)	
CIRCLING	480-1 457 (500-1)		480-1½ 557 (600-2)	580-2
S-PAR 23L **	122-¼	100	(100-¼)	GS 3.00°
S-PAR 23R	121-½	100	(100-½)	GS 3.00°

TDZL Rwy 5R  
HIRL all Rwys