

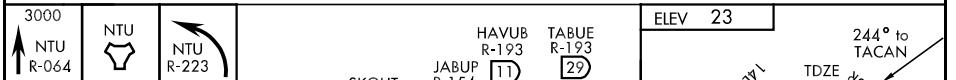
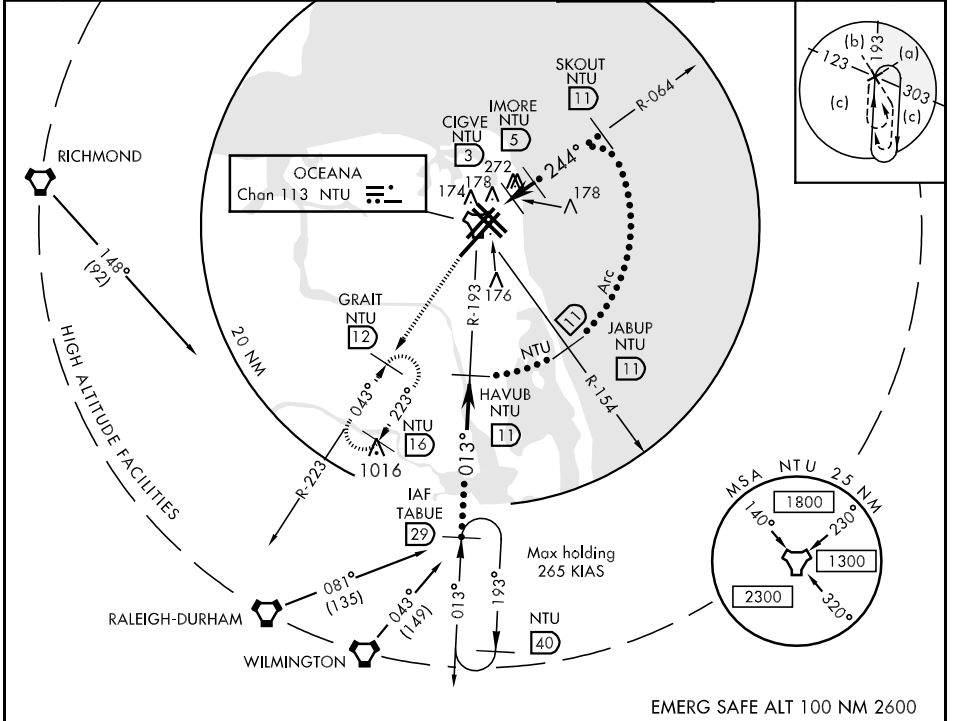
TACAN NTU Chan 113	APCH CRS 244°	Rwy ldg 23L 12,000 23R 8001 TDZE 23L 22 23R 21 Arpt Elev 23	JAL-934 [USN]
OCEANA NAS (APOLLO SOUCEK FIELD) (KNTU)			

* When ALS inop, increase vis CAT CD to 1½ miles, CAT E to 1½ miles.
 ** When ALS inop, increase vis CAT CDE to ½ mile.

 ALSF-1

 MISSED APPROACH: Climb to 3000 via R-064 to NTU TACAN then via R-223 to GRAIT and hold.

ATIS 317.6	OCEANA APP CON 119.6 288.3 NORTH (NTU R-360 to R-150) 123.9 266.8 SOUTH (NTU R-151 to R-359)	NORFOLK APP CON 126.05 372.1	OCEANA TOWER 127.075 360.2	GND CON 336.4	CLNC DEL 254.4	ASR/PAR
----------------------	--	--	--------------------------------------	-------------------------	--------------------------	---------



CATEGORY	C	D	E
S-23L *	440-¾	418 (500-¾)	440-1 418 (500-1)
S-23R	440-1¼	419 (500-1¼)	440-1½ 419 (500-1½)
CIRCLING	480-1½ 457 (500-1½)	580-2 557 (600-2)	620-2 597 (600-2)
S-PAR 23L **	122-¼	100 (100-¼)	GS 3.00°
S-PAR 23R	121-½	100 (100-½)	GS 3.00°

TDZL Rwy 5R
 HIRL all Rwy

NE-3, 22 OCT 2009 to 19 NOV 2009

NE-3, 22 OCT 2009 to 19 NOV 2009