

RNAV (GPS) RWY 5

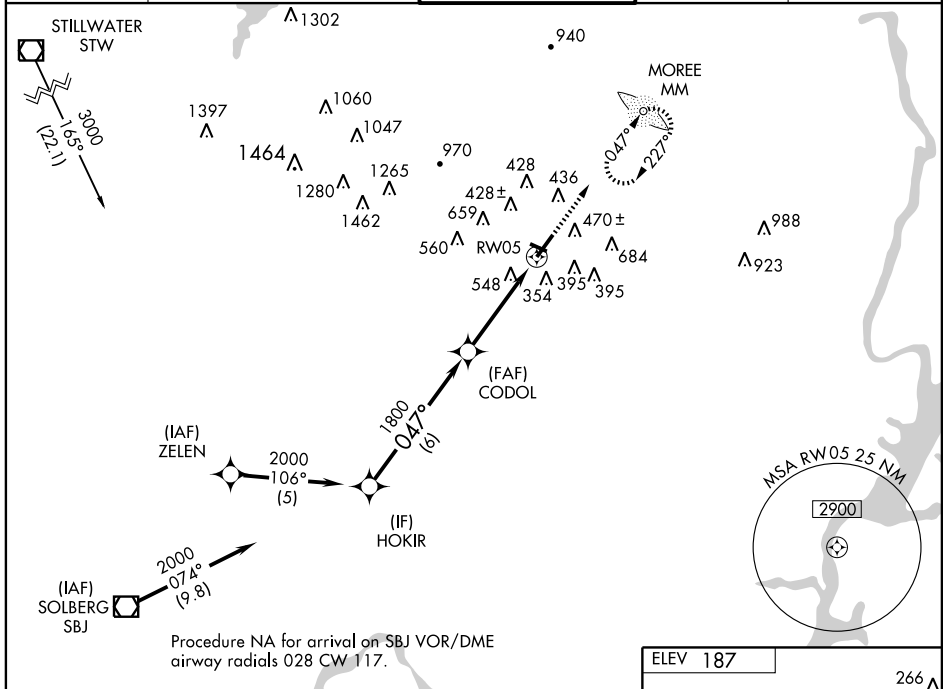
MORRISTOWN MUNI (MMU)

APP CRS	Rwy Idg	5999
047°	TDZE	184
	Apt Elev	187

▽ DME/DME RNP-0.3 NA. Obtain local altimeter setting on CTAF, if not received, use Newark Liberty Intl altimeter setting.
▲ NA Visibility reduction by helicopters NA.

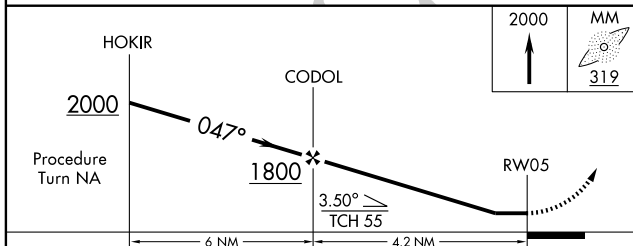
MISSED APPROACH: Climb to 2000 direct MOREE and hold.

ATIS 124.25	NEW YORK APP CON 127.6 379.9	MORRISTOWN TOWER* 118.1 (CTAF) 353.9	GND CON 121.7	CLNC DEL 121.2
-----------------------	--	---	-------------------------	--------------------------



NE-2, 22 OCT 2009 to 19 NOV 2009

NE-2, 22 OCT 2009 to 19 NOV 2009



CATEGORY	A	B	C	D
LNAV MDA	800-1 616 (700-1)		800-1¾ 616 (700-1¾)	800-2 616 (700-2)
CIRCLING	860-1 673 (700-1)		860-2 673 (700-2)	1000-2¾ 813 (900-2¾)
NEWARK LIBERTY INTL ALTIMETER SETTING MINIMUMS				
LNAV MDA	860-1 676 (700-1)		860-2 676 (700-2)	860-2½ 676 (700-2½)
CIRCLING	920-1 733 (800-1)		920-2 733 (800-2)	1040-2¾ 853 (900-2¾)

