


NDB or GPS RWY 23

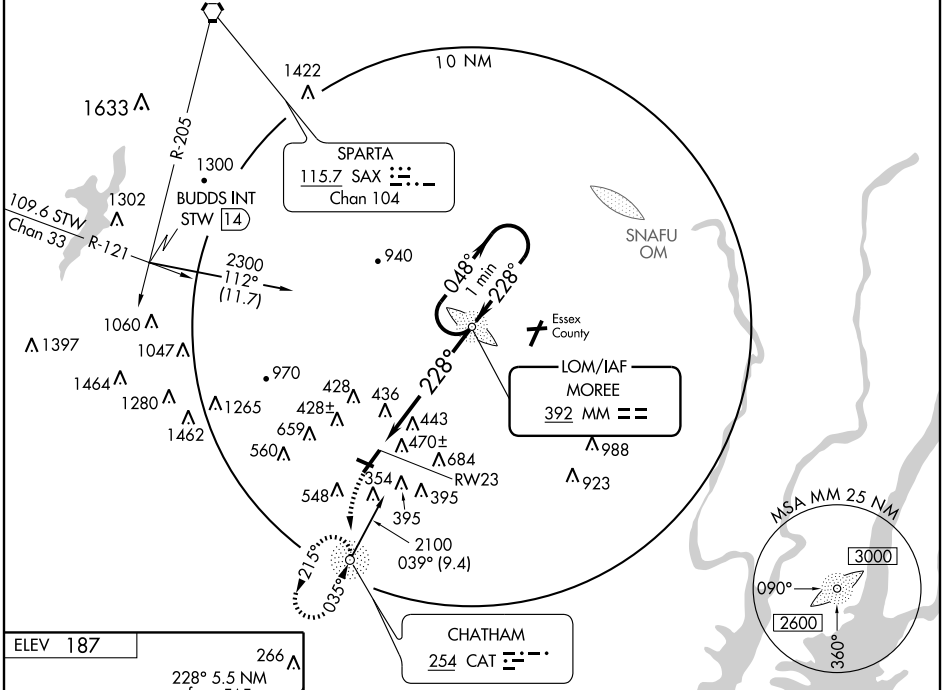
MORRISTOWN MUNI (MMU)

LOM MM 392	APP CRS 228°	Rwy Idg TDZE Apt Elev	5999 184 187
----------------------	------------------------	-----------------------------	---

CAUTION: Caldwell/Essex County OM for Rwy 22 may be received prior to Moree LOM. When local altimeter not received, use Newark altimeter setting minimums.

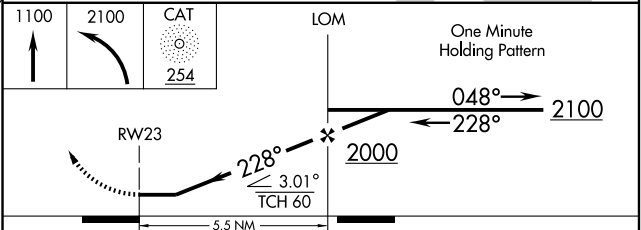
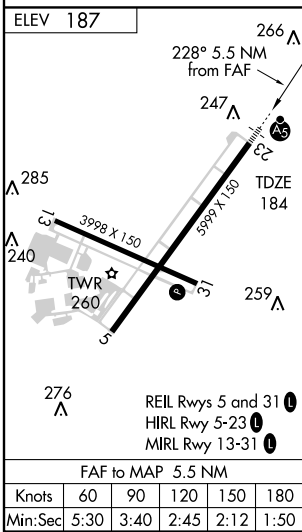
MALSR

MISSED APPROACH: Climb to 1100 then climbing left turn to 2100 direct CAT NDB and hold.

ATIS 124.25	NEW YORK APP CON 127.6 379.9	MORRISTOWN TOWER* 118.10 (CTAF)353.9	GND CON 121.7	CLNC DEL 121.2
-----------------------	--	--	-------------------------	--------------------------



NE-2, 22 OCT 2009 to 19 NOV 2009

NE-2, 22 OCT 2009 to 19 NOV 2009



CATEGORY	A	B	C	D
S-23	860-1	676 (700-1)	860-1½ 676 (700-1½)	860-2 676 (700-2)
CIRCLING	860-1	673 (700-1)	860-2 673 (700-2)	1000-2¾ 813 (900-2¾)
NEWARK ALTIMETER SETTING MINIMUMS				
S-23	980-1	796 (800-1)	980-1¾ 796 (800-1¾)	980-2¼ 796 (800-2¼)
CIRCLING	980-1 793 (800-1)	980-1¼ 793 (800-1¼)	980-2¼ 793 (800-2¼)	1120-3 933 (1000-3)