

NDB RWY 5

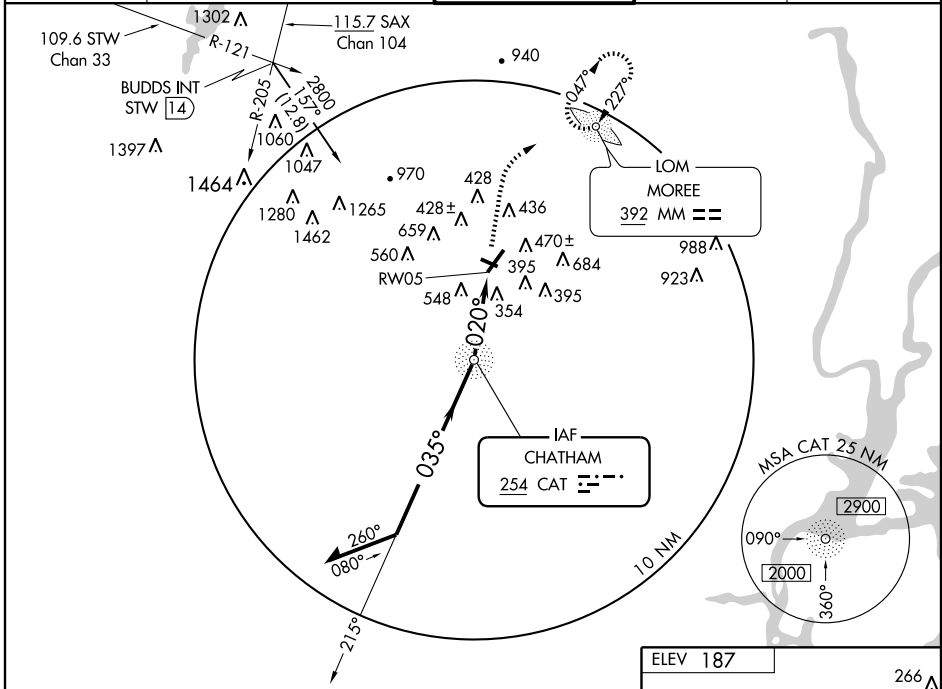
MORRISTOWN MUNI (MMU)

NDB CAT 254	APP CRS 020°	Rwy Idg 5999
		TDZE 184
		Apt Elev 187

▼ When local altimeter setting not received, use Newark altimeter setting.
▲ Visibility reduction by helicopters NA.

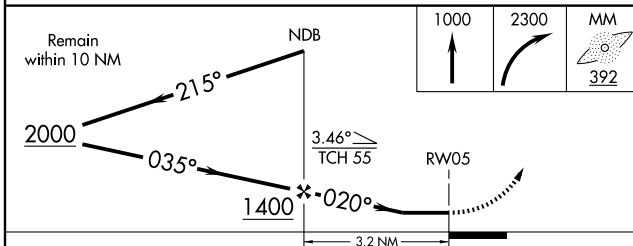
MISSED APPROACH: Climb to 1000, then climbing right turn to 2300 direct MOREE LOM and hold.

ATIS 124.25	NEW YORK APP CON 127.6 379.9	MORRISTOWN TOWER ★ 118.1 (CTAF) 353.9	GND CON 121.7	CLNC DEL 121.2
-----------------------	--	--	-------------------------	--------------------------

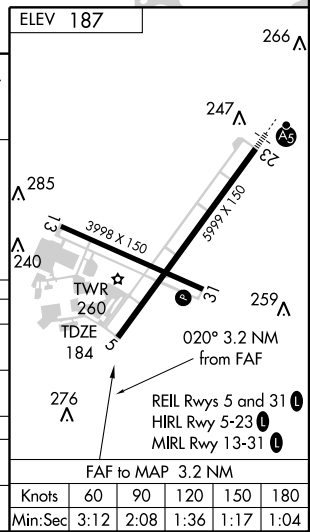


NE-2, 22 OCT 2009 to 19 NOV 2009

NE-2, 22 OCT 2009 to 19 NOV 2009



CATEGORY	A	B	C	D
S-5	860-1	676 (700-1)	860-2 676 (700-2)	860-2¼ 676 (700-2¼)
CIRCLING	860-1	673 (700-1)	860-2 673 (700-2)	1000-2¾ 813 (900-2¾)
NEWARK ALTIMETER SETTING MINIMUMS				
S-5	920-1	736 (800-1)	920-2 736 (800-2)	920-2¼ 736 (800-2¼)
CIRCLING	920-1	733 (800-1)	920-2 733 (800-2)	1040-2¾ 853 (900-2¾)



FAF to MAP 3.2 NM					
Knots	60	90	120	150	180
Min:Sec	3:12	2:08	1:36	1:17	1:04