

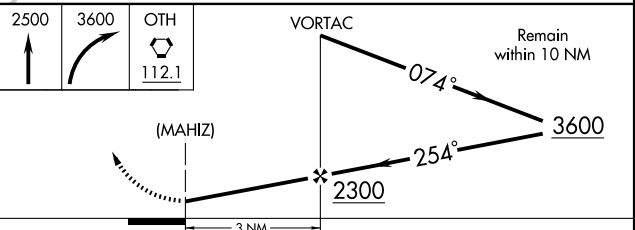
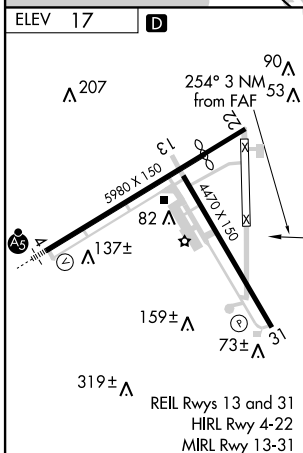
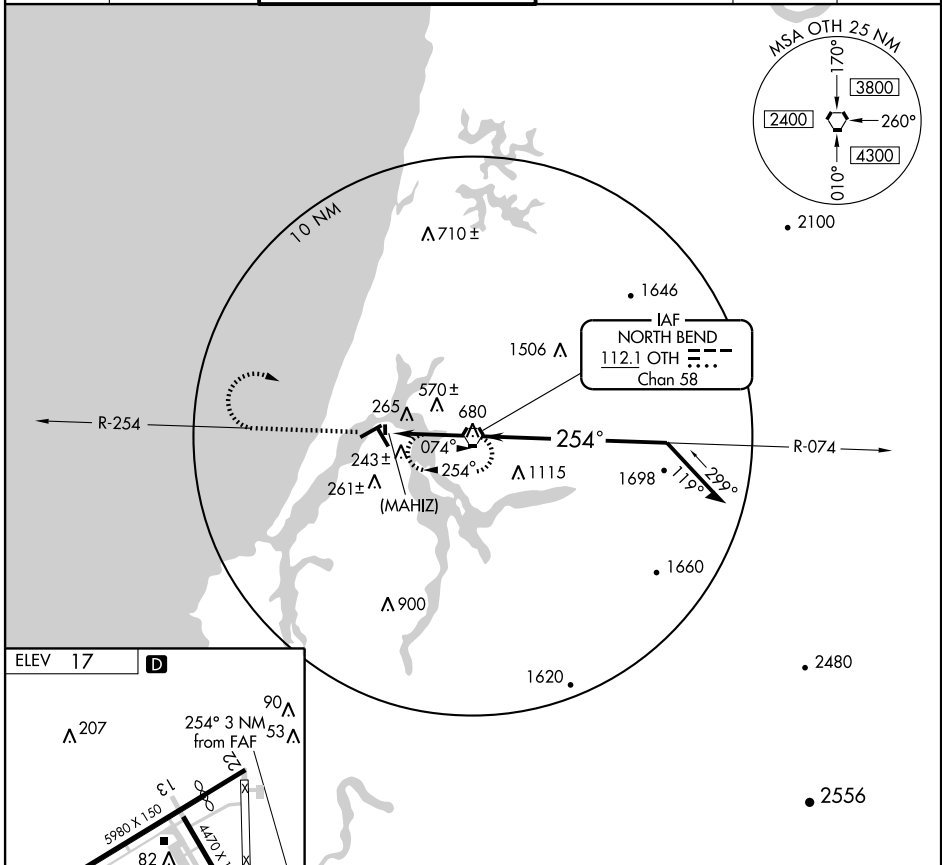
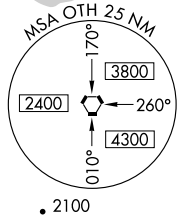
# VOR or GPS-A

NORTH BEND/SOUTHWEST OREGON RGNL (OTH)

VORTAC OTH <b>112.1</b> Chan <b>58</b>	APP CRS <b>254°</b>	Rwy Idg TDZE Apt Elev <b>N/A</b> <b>N/A</b> <b>17</b>
--	------------------------	--

MISSED APPROACH: Climb to 2500, then climbing right turn to 3600 direct OTH VORTAC and hold.

AWOS-3 <b>135.075</b>	SEATTLE CENTER <b>121.4 254.35</b>	SOUTHWEST REGIONAL TOWER * <b>118.45 (CTAF)</b>	MC MINNVILLE RADIO <b>122.4 255.4</b>	GND CON <b>127.1</b>	UNICOM <b>122.7</b>
--------------------------	---------------------------------------	--	--	-------------------------	------------------------



FAF to MAP 3 NM					
Knots	60	90	120	150	180
Min:Sec	3:00	2:00	1:30	1:12	1:00
CATEGORY	A	B	C	D	
CIRCLING	1100-1¼ 1086 (1100-1¼)	1100-1½ 1086 (1100-1½)	1100-3	1086 (1100-3)	

NW-1, 22 OCT 2009 to 19 NOV 2009

NW-1, 22 OCT 2009 to 19 NOV 2009