

NORTH BEND, OREGON

AL-929 (FAA)

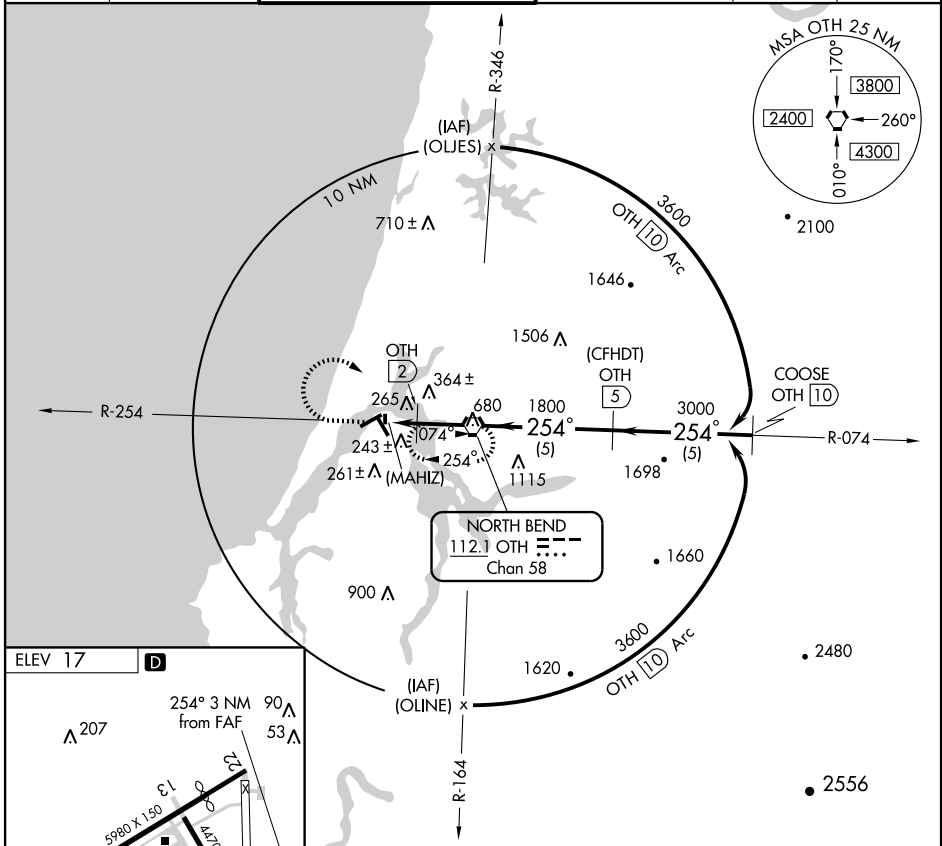
VORTAC OTH 112.1 Chan 58	APP CRS 254°	Rwy Idg TDZE Apt Elev 17	N/A N/A 17
--	------------------------	--	---------------------------------------

VOR/DME or GPS-B

NORTH BEND/ SOUTHWEST OREGON RGNL (OTH)

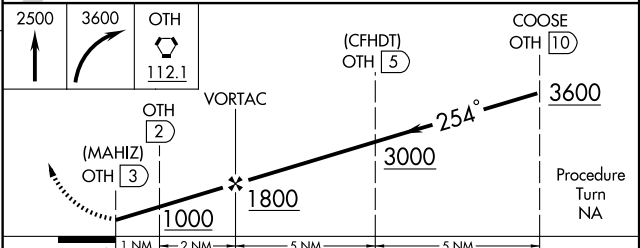
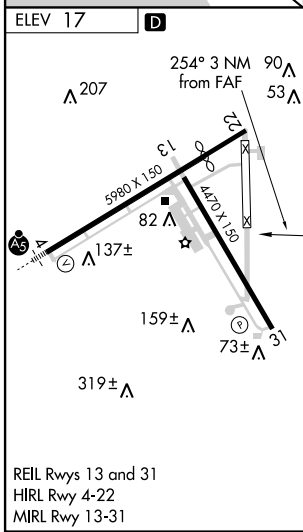
		MISSED APPROACH: Climb to 2500, then climbing right turn to 3600 direct OTH VORTAC and hold.			
--	--	--	--	--	--

AWOS-3 135.075	SEATTLE CENTER 121.4 254.35	SOUTHWEST REGIONAL TOWER * 118.45 (CTAF)	MC MINNVILLE RADIO 122.4 255.4	GND CON 127.1	UNICOM 122.7
--------------------------	---------------------------------------	--	--	-------------------------	------------------------



NW-1, 22 OCT 2009 to 19 NOV 2009

NW-1, 22 OCT 2009 to 19 NOV 2009



CATEGORY	A	B	C	D
CIRCLING	720-1 706 (800-1)	760-1¼ 746 (800-1¼)	820-2¼ 806 (900-2¼)	1000-3 986 (1000-3)

NORTH BEND, OREGON
Amdt 3 09295

NORTH BEND/ SOUTHWEST OREGON RGNL (OTH)
43°25'N - 124°15'W
VOR/DME or GPS-B