

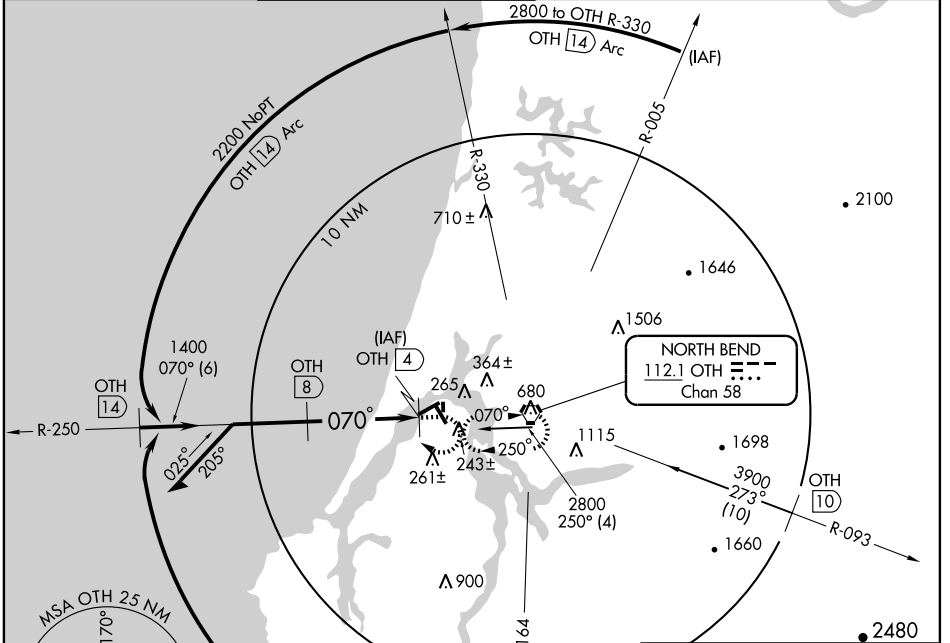
VORTAC OTH <b>112.1</b> Chan <b>58</b>	APP CRS <b>070°</b>	Rwy Idg TDZE Apt Elev	<b>5321</b> <b>12</b> <b>17</b>
--	------------------------	-----------------------------	---------------------------------------

# VOR/DME RWY 4

NORTH BEND/SOUTHWEST OREGON RGNL (OTH)

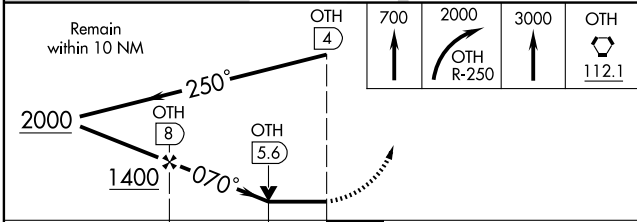
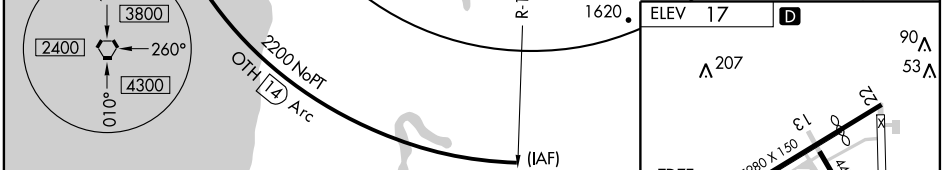
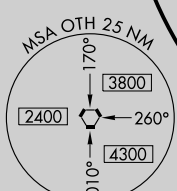
	MALSR	MISSED APPROACH: Climb to 700, then climbing right turn to 2000 via OTH R-250; then climb to 3000 direct OTH VORTAC and hold.

AWOS-3 <b>135.075</b>	SEATTLE CENTER <b>121.4 254.35</b>	SOUTHWEST REGIONAL TOWER * <b>118.45 (CTAF)</b>	MC MINNVILLE RADIO <b>122.4 255.4</b>	GND CON <b>127.1</b>	UNICOM <b>122.7</b>
--------------------------	---------------------------------------	--	--	-------------------------	------------------------



NW-1, 22 OCT 2009 to 19 NOV 2009

NW-1, 22 OCT 2009 to 19 NOV 2009



CATEGORY	A	B	C	D
S-4	540-1	528 (600-1)	540-1½ 528 (600-1½)	540-1¼ 528 (600-1¼)
CIRCLING	720-1 706 (800-1)	760-1¼ 746 (800-1¼)	820-2¼ 806 (900-2¼)	1000-3 986 (1000-3)

REL Rws 13 and 31  
HIRL Rwy 4-22  
MIRL Rwy 13-31