

(OTH4.OTH) 09295

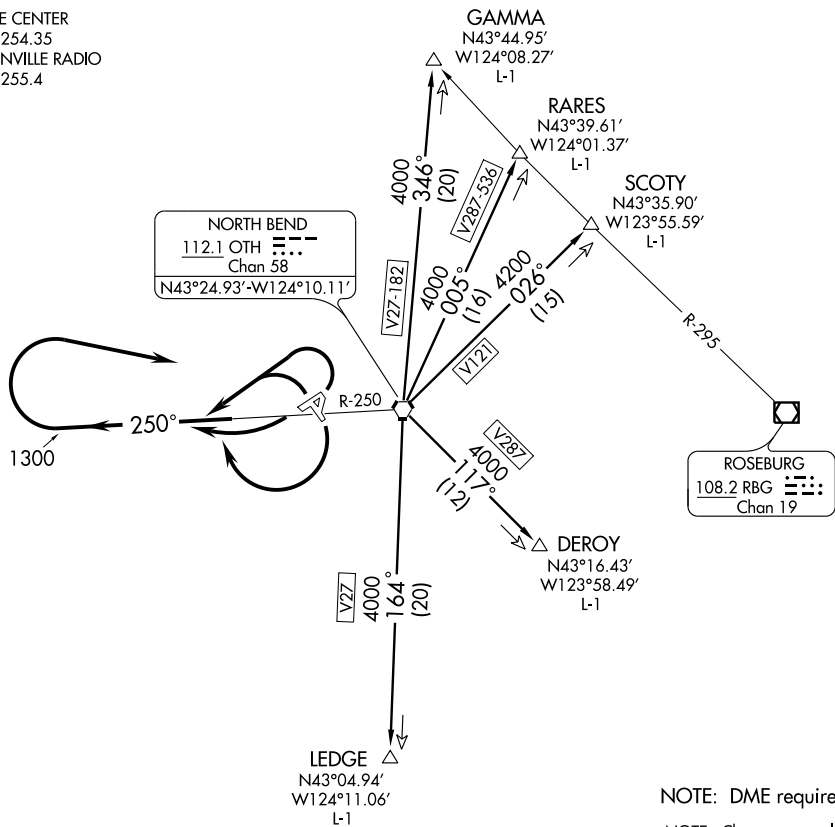
NORTH BEND FOUR DEPARTURE

NORTH BEND/SOUTHWEST OREGON RGNL (OTH)

SL-929 (FAA)

NORTH BEND, OREGON

SEATTLE CENTER
121.4 254.35
McMINNVILLE RADIO
122.4 255.4



NOTE: DME required.

NOTE: Chart not to scale.

NW-1, 22 OCT 2009 to 19 NOV 2009

NW-1, 22 OCT 2009 to 19 NOV 2009

DEPARTURE ROUTE DESCRIPTION

TAKE-OFF RUNWAYS 4, 31 and 34: Turn left. Thence....

TAKE-OFF RUNWAYS 13, 16 and 22: Turn right. Thence....

....All aircraft climb via OTH R-250 to 1300, then climbing right turn direct OTH VORTAC. Thence via (transition).

DEROY TRANSITION (OTH4.DEROY): From over OTH VORTAC via OTH R-117 to DEROY DME FIX.

GAMMA TRANSITION (OTH4.GAMMA): From over OTH VORTAC via OTH R-346 to GAMMA INT.

LEDGE TRANSITION (OTH4.LEDGE): From over OTH VORTAC via OTH R-164 to LEDGE DME FIX.

RARES TRANSITION (OTH4.RARES): From over OTH VORTAC via OTH R-005 to RARES INT.

SCOTY TRANSITION (OTH4.SCOTY): From over OTH VORTAC via OTH R-026 to SCOTY INT.

NORTH BEND FOUR DEPARTURE

(OTH4.OTH) 09295

NORTH BEND, OREGON

NORTH BEND/SOUTHWEST OREGON RGNL (OTH)