

NORTH BEND, OREGON

AL-929 (FAA)

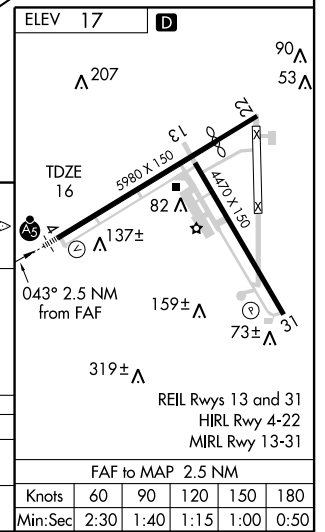
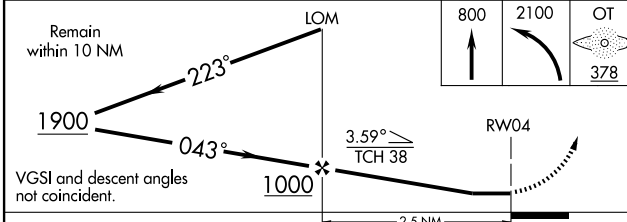
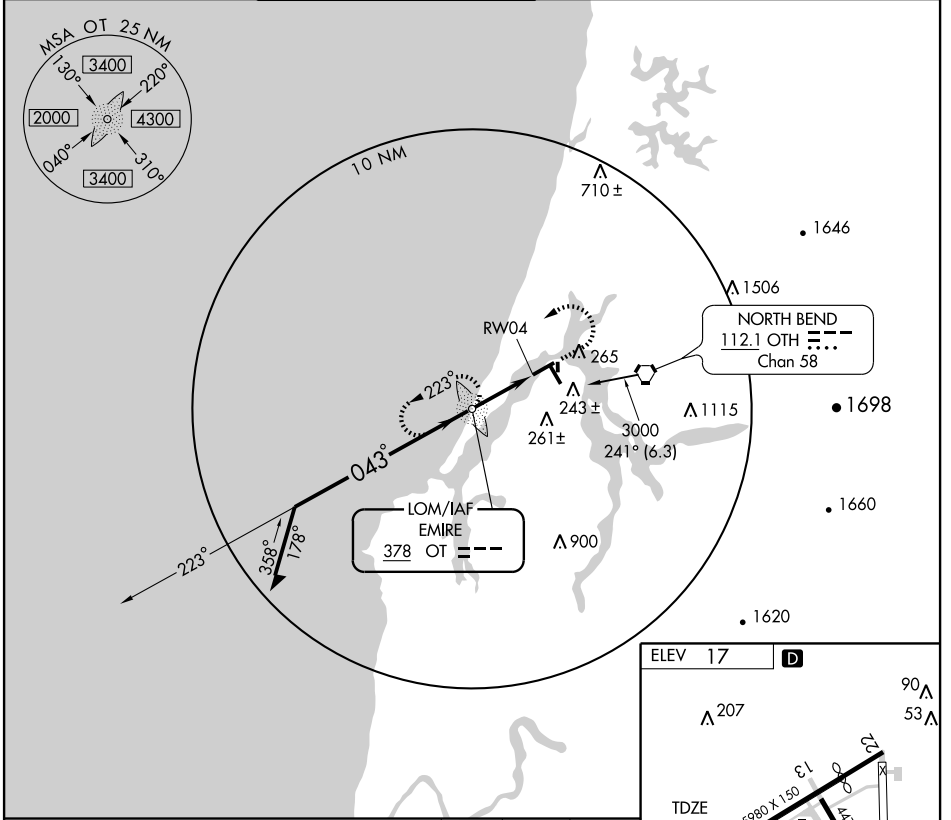
# NDB or GPS RWY 4

NORTH BEND/SOUTHWEST OREGON RGNL (OTH)

LOM OT <b>378</b>	APP CRS <b>043°</b>	Rwy Idg TDZE Apt Elev	<b>5321</b> <b>16</b> <b>17</b>
----------------------	------------------------	-----------------------------	---------------------------------------

		MISSED APPROACH: Climb to 800, then climbing left turn to 2100 direct EMIRE (OT) LOM and hold, continue climb-in-hold to 2100.			

AWOS-3 <b>135.075</b>	SEATTLE CENTER <b>121.4 254.35</b>	SOUTHWEST REGIONAL TOWER * <b>118.45 (CTAF)</b>	MC MINNVILLE RADIO <b>122.4 255.4</b>	GND CON <b>127.1</b>	UNICOM <b>122.7</b>
--------------------------	---------------------------------------	--	--	-------------------------	------------------------



CATEGORY	A	B	C	D
S-4	660-1	644 (700-1)	660-1¼ 644 (700-1¼)	660-2 644 (700-2)
CIRCLING	740-1 723 (800-1)	740-1¼ 723 (800-1¼)	820-2¼ 803 (900-2¼)	1000-3 983 (1000-3)

NORTH BEND, OREGON  
Amdt 4B 09295

43°25'N - 124°15'W

NORTH BEND/SOUTHWEST OREGON RGNL (OTH)

# NDB or GPS RWY 4

NW-1, 22 OCT 2009 to 19 NOV 2009

NW-1, 22 OCT 2009 to 19 NOV 2009

FAF to MAP 2.5 NM					
Knots	60	90	120	150	180
Min:Sec	2:30	1:40	1:15	1:00	0:50