

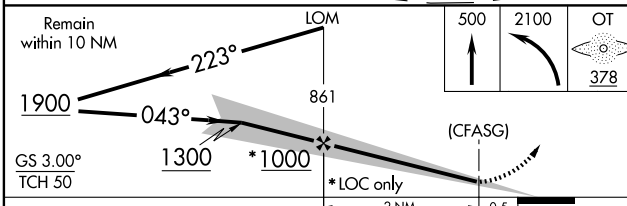
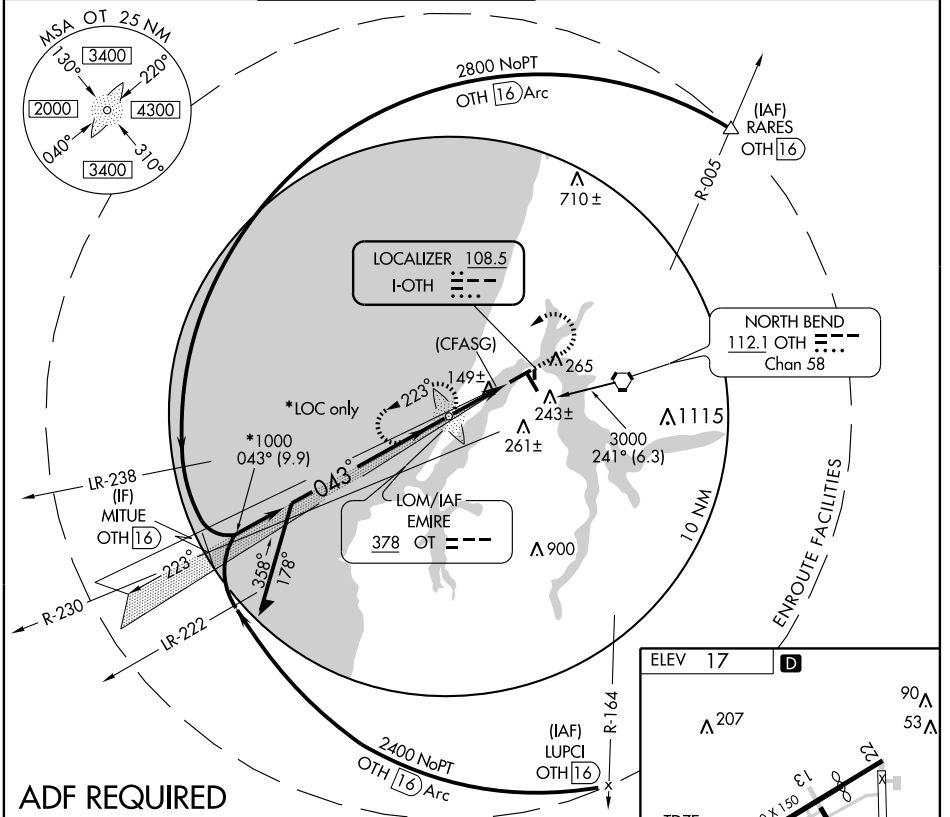
ILS or LOC RWY 4

NORTH BEND/ SOUTHWEST OREGON RGNL (OTH)

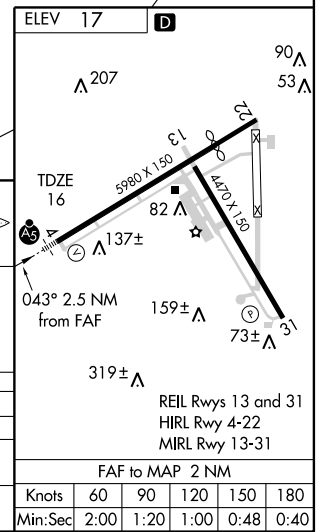
LOC I-OTH 108.5	APP CRS 043°	Rwy Idg 5321
		TDZE 16
		Apt Elev 17

		MISSED APPROACH: Climb to 500, then climbing left turn to 2100 direct EMIRE LOM and hold, continue climb-in-hold to 2100.			
		AWOS-3 135.075	SEATTLE CENTER 121.4 254.35	SOUTHWEST REGIONAL TOWER * 118.45 (CTAF)	MC MINNVILLE RADIO 122.4 255.4

UNICOM 122.7



CATEGORY	A	B	C	D
S-ILS 4		216-3/4	200 (200-3/4)	
S-LOC 4		400-1 384 (400-1)		400-1 1/4 384 (400-1 1/4)
CIRCLING	740-1 723 (800-1)		820-2 1/4 803 (900-2 1/4)	1000-3 983 (1000-3)



NW-1, 22 OCT 2009 to 19 NOV 2009

NW-1, 22 OCT 2009 to 19 NOV 2009