

VORTAC LRP <b>117.3</b> Chan <b>120</b>	APP CRS <b>247°</b>	Rwy Idg <b>5775</b> TDZE <b>387</b> Apt Elev <b>403</b>
---	------------------------	---

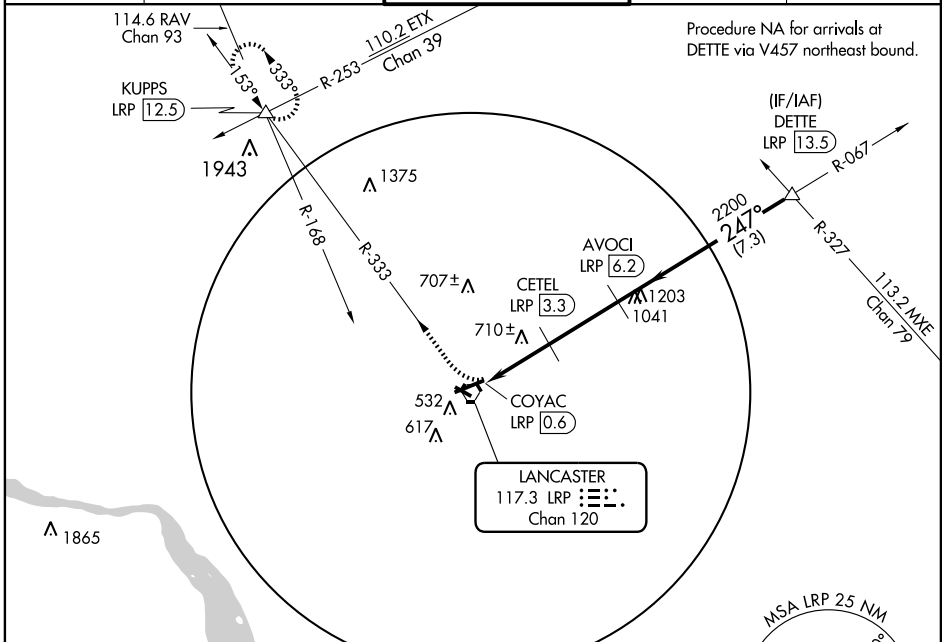
# VOR/DME RWY 26

LANCASTER (LNS)

**⚠** Visibility reduction by helicopters NA. When local altimeter setting not received, use Harrisburg Intl altimeter setting and increase all MDA 80 feet and S-26 and Circling Cats C and D visibility 1/4 mile.

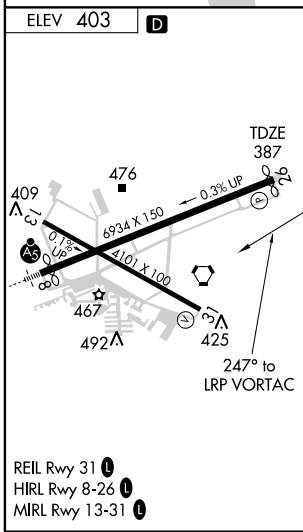
**⚠** MISSED APPROACH: Climbing right turn to 3000 via LRP VORTAC R-333 to KUPPS INT/LRP 12.5 DME and hold.

ATIS <b>125.675</b>	HARRISBURG APP CON <b>126.45 281.525</b>	LANCASTER TOWER ★ <b>120.9 (CTAF) 251.1</b>	GND CON <b>121.8</b>	UNICOM <b>122.95</b>
------------------------	---	--	-------------------------	-------------------------



NE-4, 22 OCT 2009 to 19 NOV 2009

NE-4, 22 OCT 2009 to 19 NOV 2009



	3000	LRP R-333 117.3	KUPPS <b>△</b>	CETEL LRP 3.3	AVOCI LRP 6.2	DETT LRP 13.5	3000
		VORTAC COYAC LRP 0.6					Procedure Turn NA
		1260	2.7 NM	2.9 NM	7.3 NM		
					247°		
					3.00° TCH 47		
CATEGORY	A	B	C	D			
S-26	1020-1	633 (700-1)	1020-1¾ 633 (700-1¾)	1020-2 633 (700-2)			
CIRCLING	1020-1	617 (700-1)	1020-1¾ 617 (700-1¾)	1080-2¼ 677 (700-2¼)			