

# RNAV (GPS) RWY 8 LANCASTER (LNS)

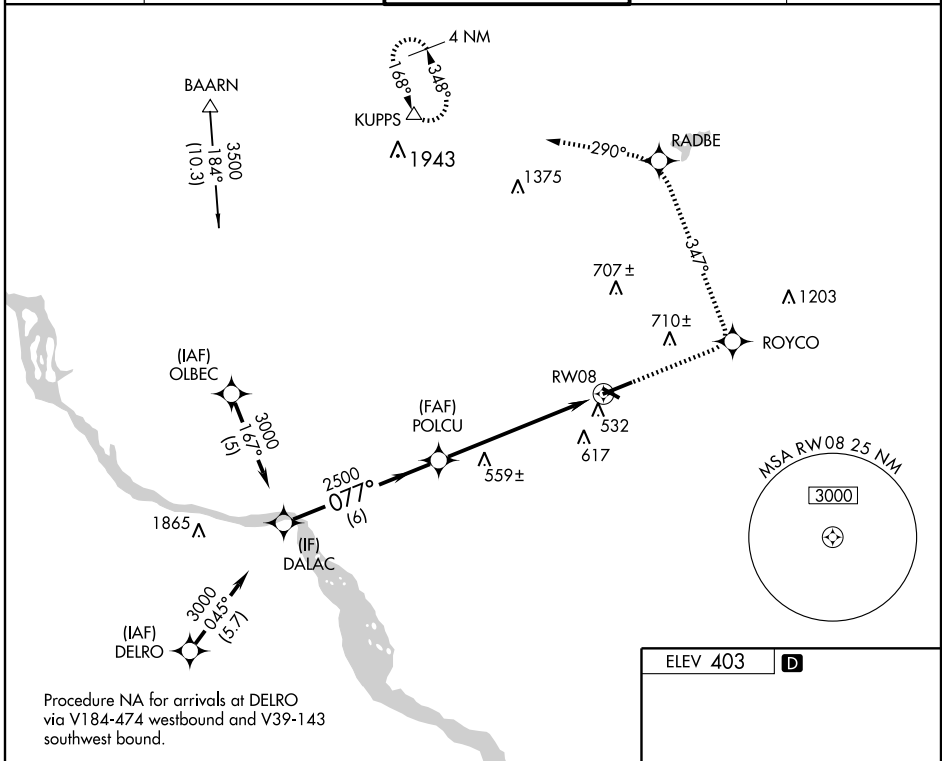
APP CRS <b>077°</b>	Rwy Idg <b>6275</b>
	TDZE <b>399</b>
	Apt Elev <b>403</b>

**⚠** For uncompensated Baro-VNAV systems, procedure NA below -15°C (5°F) or above 48°C (118°F).  
**⚠** DME/DME RNP-0.3 NA.

MALSR  

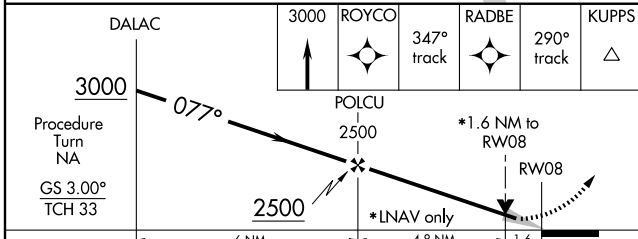

**MISSED APPROACH:** Climb to 3000 direct ROYCO and via 347° track to RADBE and via 290° track to KUPPS and hold.

ATIS <b>125.675</b>	HARRISBURG APP CON <b>126.45 281.525</b>	LANCASTER TOWER ★ <b>120.9 (CTAF) 251.1</b>	GND CON <b>121.8</b>	UNICOM <b>122.95</b>
------------------------	---	--	-------------------------	-------------------------



NE-4, 22 OCT 2009 to 19 NOV 2009

NE-4, 22 OCT 2009 to 19 NOV 2009



CATEGORY	A	B	C	D
LNVA/VNAV DA	860-1¼ 461 (500-1¼)			
LNVA MDA	940-½ 541 (600-½)		940-1 541 (600-1)	940-1¼ 541 (600-1¼)
CIRCLING	940-1 537 (600-1)		940-1½ 537 (600-1½)	1080-2¼ 677 (700-2¼)

