

RNAV (GPS) RWY 26

LANCASTER (LNS)

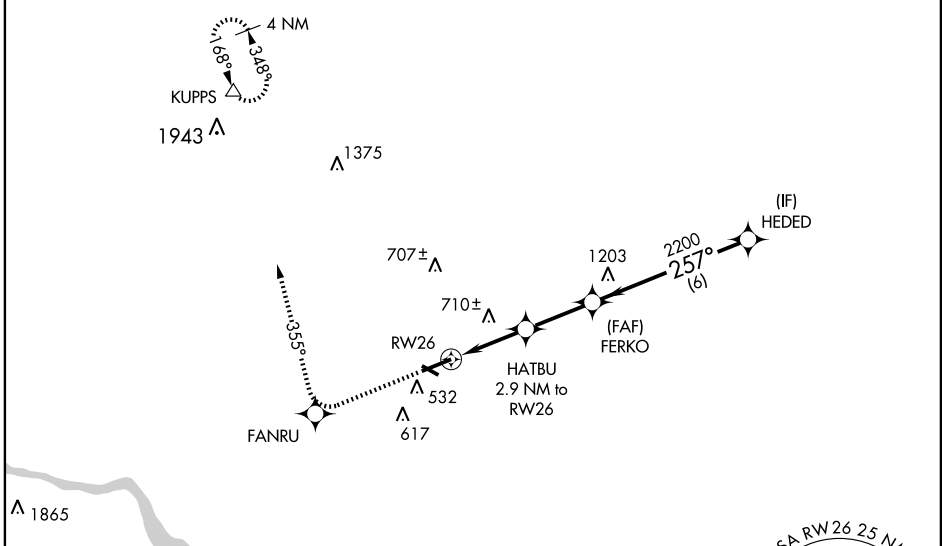
APP CRS	Rwy Idg	5775
257°	TDZE	387
	Apt Elev	403

▽ DME/DME RNP-0.3 NA.
▲ When local altimeter setting not received, use Harrisburg Intl altimeter setting and increase all MDA 80 feet and LNAV and Circling Cat C and D visibility ¼ mile. VDP NA when using Harrisburg Intl altimeter setting.

MISSED APPROACH: Climb to 3000 direct FANRU and right turn via 355° track to KUPPS and hold.

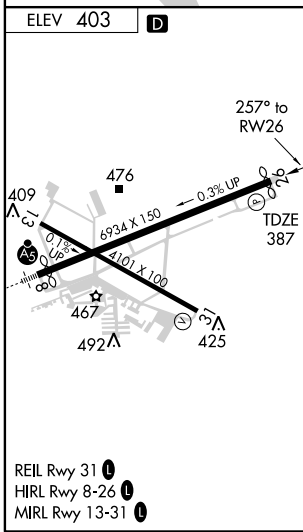
ATIS 125.675	HARRISBURG APP CON 126.45 281.525	LANCASTER TOWER ★ 120.9 (CTAF) 0 251.1	GND CON 121.8	UNICOM 122.95
------------------------	---	--	-------------------------	-------------------------

RADAR REQUIRED



NE-4, 22 OCT 2009 to 19 NOV 2009

NE-4, 22 OCT 2009 to 19 NOV 2009



ELEV 403	D				
3000	FANRU	KUPPS	FERKO	HEDED	3000
↑	↖	↖	↖	↖	↖
	355° track				
	1.9 NM to RW26	HATBU 2.9 NM to RW26	2200		
		1340 ≤ 3.06° TCH 47			
	1.9	1 NM	2.6 NM	6 NM	
CATEGORY	A	B	C	D	
LNAV MDA	1020-1	633 (700-1)	1020-1¾ 633 (700-1¾)	1020-2 633 (700-2)	
CIRCLING	1020-1	617 (700-1)	1020-1¾ 617 (700-1¾)	1080-2½ 677 (700-2½)	