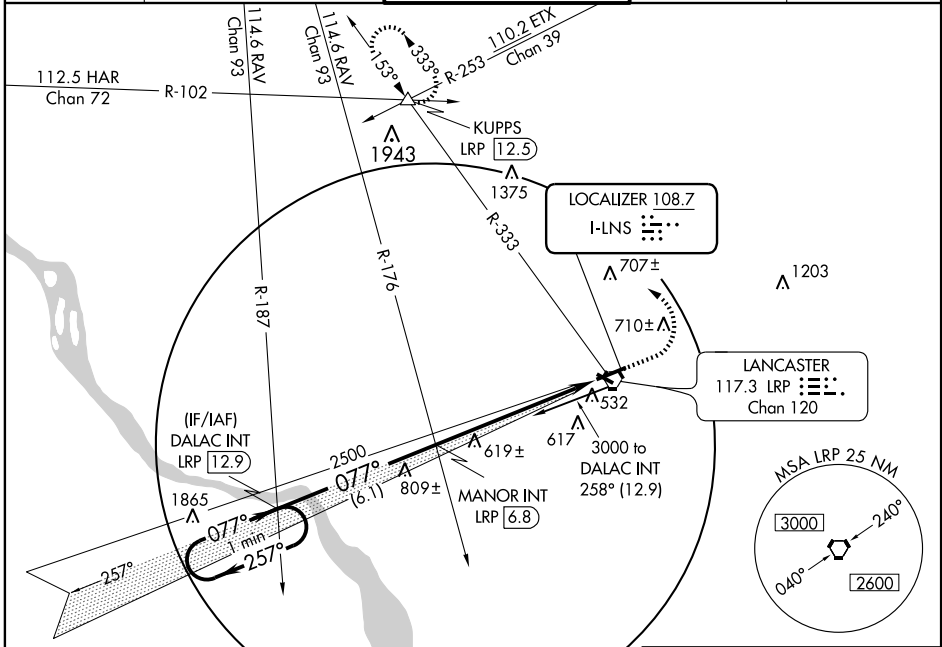


ILS or LOC RWY 8 LANCASTER (LNS)

LOC I-LS 108.7	APP CRS 077°	Rwy Idg 6275
		TDZE 399
		Apt Elev 403

<p>▽ If local altimeter setting not received, use Harrisburg Intl altimeter setting and increase all DAs/MDAs 80 feet.</p>	<p>MALSR</p>	<p>MISSED APPROACH: Climb to 1200, then climbing left turn to 3000 via LRP R-333 to KUPPS INT/LRP 12.5 DME and hold.</p>
---	---------------------	---

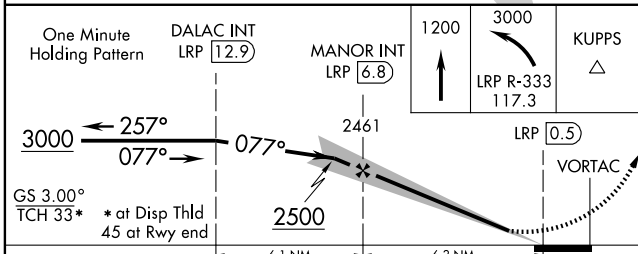
<p>ATIS 125.675</p>	<p>HARRISBURG APP CON 126.45 281.525</p>	<p>LANCASTER TOWER* 120.9 (CTAF) 251.1</p>	<p>GND CON 121.8</p>	<p>UNICOM 122.95</p>
--------------------------------	---	--	---------------------------------	---------------------------------



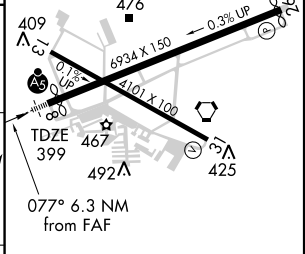
NE-4, 22 OCT 2009 to 19 NOV 2009

NE-4, 22 OCT 2009 to 19 NOV 2009

One Minute Holding Pattern	DALAC INT LRP [12.9]	MANOR INT LRP [6.8]	1200	3000	KUPPS
			↑	LRP R-333 117.3	△



ELEV 403	D
----------	----------



CATEGORY	A	B	C	D
S-ILS 8		599-½	200 (200-½)	
S-LOC 8	900-½	501 (500-½)	900-1	501 (500-1)
CIRCLING	920-1	517 (600-1)	920-1½ 517 (600-1½)	1080-2¼ 677 (700-2¼)

REIL Rwy 31	HIRL Rwy 8-26	MIRL Rwy 13-31			
FAF to MAP 6.3 NM					
Knots	60	90	120	150	180
Min:Sec	6:18	4:12	3:09	2:31	2:06