

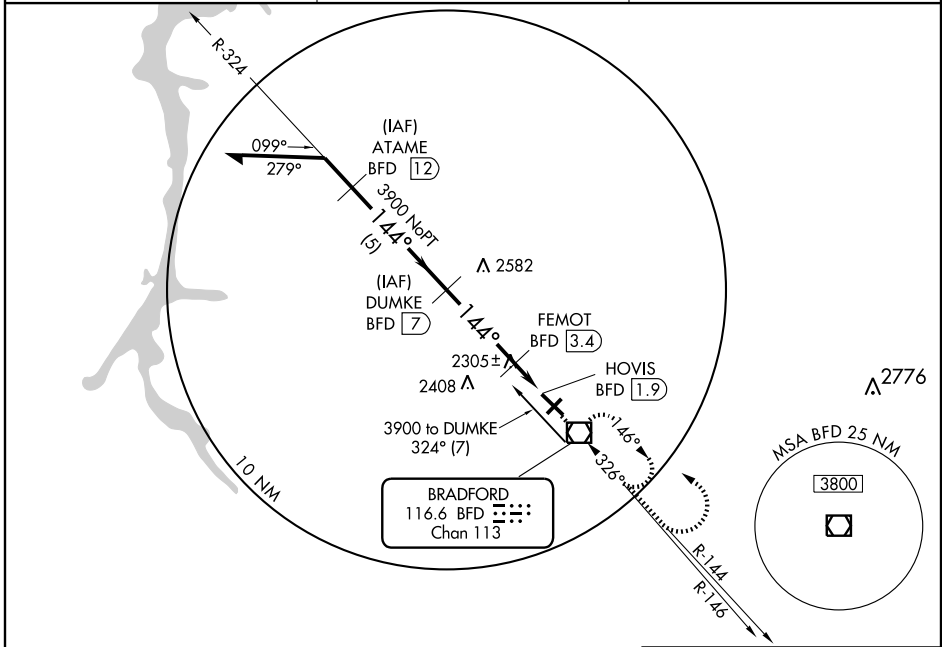
VOR/DME BFD 116.6 Chan 113	APP CRS 144°	Rwy Idg TDZE Apt Elev	6309 2118 2143
--	------------------------	-----------------------------	---

VOR/DME RWY 14

BRADFORD RGNL (BFD)

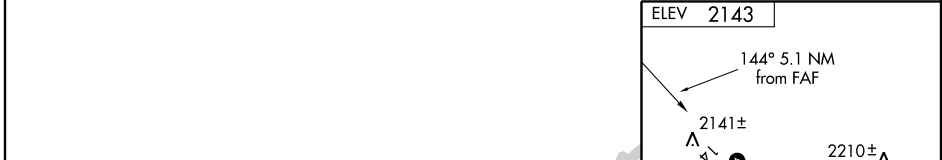
▽ MISSED APPROACH: Climb direct BFD VOR/DME, continue climb to 3900 on R-144, then left turn direct BFD VOR/DME and hold.

ASOS 133.825	CLEVELAND CENTER 124.325 353.85	UNICOM 123.075 (CTAF) 0
------------------------	---	--



NE-4, 22 OCT 2009 to 19 NOV 2009

NE-4, 22 OCT 2009 to 19 NOV 2009



Remain within 10 NM	DUMKE BFD 7	BFD 116.6	3900 BFD R-144	BFD
	4000	3900	FEMOT BFD 3.4	HOVIS BFD 1.9
VGSI and descent angles not coincident.	324°	144°	3.24° TCH 55	2660
	3.6 NM	1.5	VOR/DME	
CATEGORY	A	B	C	D
S-14	2560-1	442 (500-1)	2560-1½ 442 (500-1½)	2560-1½ 442 (500-1½)
CIRCLING	2620-1	477 (500-1)	2620-1½ 477 (500-1½)	2700-2 557 (600-2)

ELEV 2143

144° 5.1 NM from FAF

2141±

2210±

2217±

2202±

2242

0.38% UP

500 X 1.30

4500 X 1.00

AS

MIRL Rwy 5-23 **0**

HIRL Rwy 14-32 **0**

REIL Rwy 5, 14 and 23 **0**