

OXNARD, CALIFORNIA

TACAN RWY 21

TACAN NTD Chan 43	APCH CRS 213°	Rwy Idg 11, 102 TDZE 13 Arprt Elev 13
----------------------	------------------	---

AL-925 [USN]

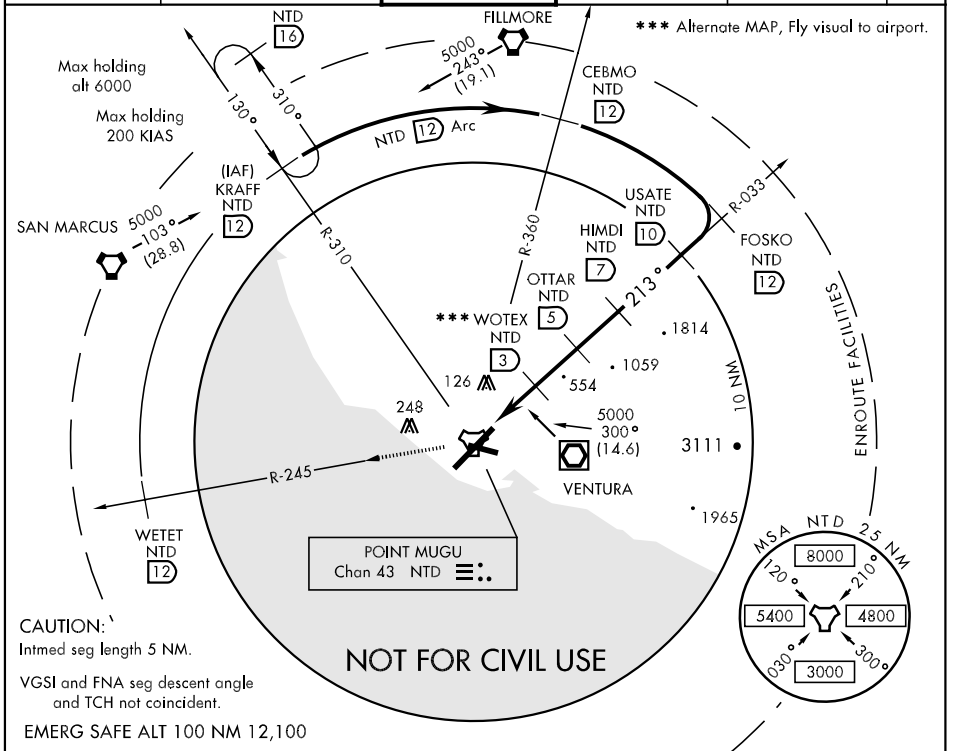
POINT MUGU NAS (KNTD)
(NAVAL BASE VENTURA CO)

▼ * When ALS inop, increase vis CAT ABC to 1 mile, CAT D to 1½ miles.
 ** Circling not authorized E of Rwy 3-21 or when alternate MAP Rwy 21 in use.

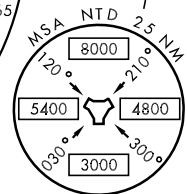


MISSED APPROACH: Climb to 5000 via NTD TACAN R-033 to NTD, then via NTD R-245 to WETET. Arc NW on NTD 12 DME arc to KRAFF and hold.

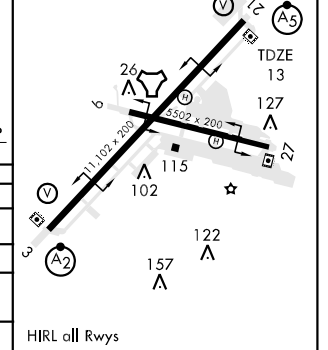
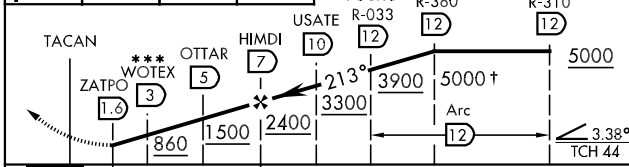
ATIS * 125.55 363.05	POINT MUGU APP CON 128.65 307.275	POINT MUGU TOWER * 124.85 290.375	GND CON 121.6 360.2	CLNC DEL 120.75 279.55	ASR/ PAR
-------------------------	--------------------------------------	--------------------------------------	------------------------	---------------------------	-------------



*** Alternate MAP, Fly visual to airport.



5000 NTD R-033	NTD	WETET NTD 12	Arc NW to KRAFF	† Or as assigned.	ELEV 13	213° to TACAN
----------------	-----	--------------	-----------------	-------------------	---------	---------------



CATEGORY	A	B	C	D	E
S-21 *	380-½ 367 (400-½)		380-¾ 367 (400-¾)		NA
S-21 ***		860-2 847 (900-2)			NA
CIRCLING **	420-1 407 (500-1)	480-1 467 (500-1)	480-1½ 467 (500-1½)	580-2 567 (600-2)	NA
S-PAR 21	113-½ 100 (100-½) GS 3.0°				

OXNARD, CALIFORNIA 34°07'N-119°07'W
 Orig 09267
 POINT MUGU NAS (KNTD)
 (NAVAL BASE VENTURA CO)
TACAN RWY 21

SW-3, 22 OCT 2009 to 19 NOV 2009

SW-3, 22 OCT 2009 to 19 NOV 2009