

ATIS ★ 125.55 363.05
 CLNC DEL
 120.75 279.55
 GND CON
 121.6 360.2
 POINT MUGU TOWER ★
 124.85 290.375
 POINT MUGU DEP CON
 128.65 307.275

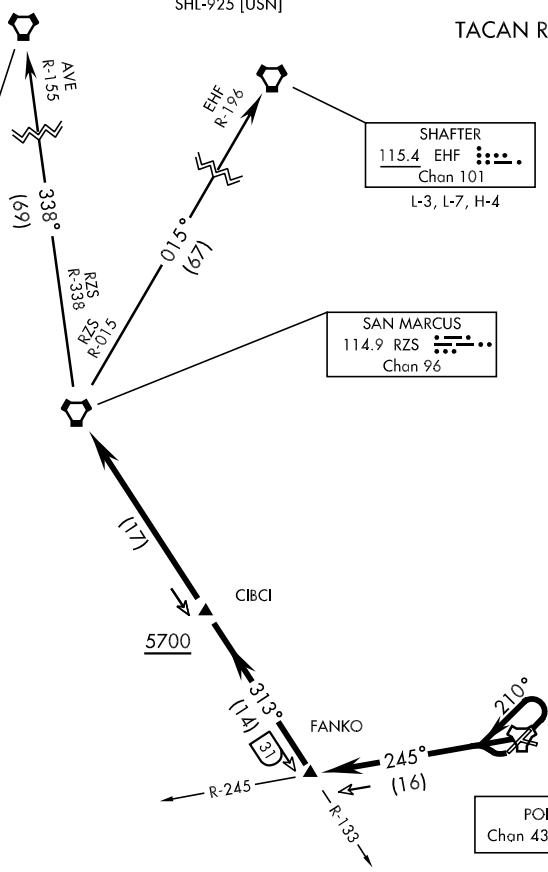
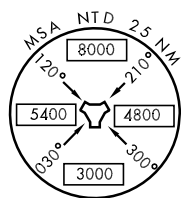
SHL-925 [USN]

TACAN REQUIRED

AVENAL
 117.1 AVE
 Chan 118
 L-3, L-7, H-4

SHAFTER
 115.4 EHF
 Chan 101
 L-3, L-7, H-4

SAN MARCUS
 114.9 RZS
 Chan 96



SW-3, 22 OCT 2009 to 19 NOV 2009

SW-3, 22 OCT 2009 to 19 NOV 2009

DEPARTURE ROUTE DESCRIPTION

TAKE-OFF RWY 3: Climbing left turn to 210° within 3 DME of NTD TACAN, then...

TAKE-OFF RWY 21: Turn right, then...

TAKE-OFF RWY 27: Turn left, then...

Intercept NTD R-245 and via NTD R-245 to FANKO (NTD R-245/16 DME), then via RZS VORTAC R-133 to RZS VORTAC, then via assigned routing.
Cross CIBCI (RZS R-133/17 DME) at or above 5700.

AVENAL TRANSITION (RZS 7 • AVE): From over SAN MARCUS VORTAC via RZS R-338 to AVENAL VORTAC. Cross SAN MARCUS VORTAC at or above 7900.

SHAFTER TRANSITION (RZS 7 • EHF): From over SAN MARCUS VORTAC via RZS R-015 to SHAFTER VORTAC. Cross SAN MARCUS VORTAC at or above 8900.