

OXNARD, CALIFORNIA

# RNAV (GPS) RWY 3

POINT MUGU NAS  
(NAVAL BASE VENTURA CO)(KNTD)

APCH CRS	Rwy Idg	11,102
030°	TDZE	11
	Arpt Elev	13

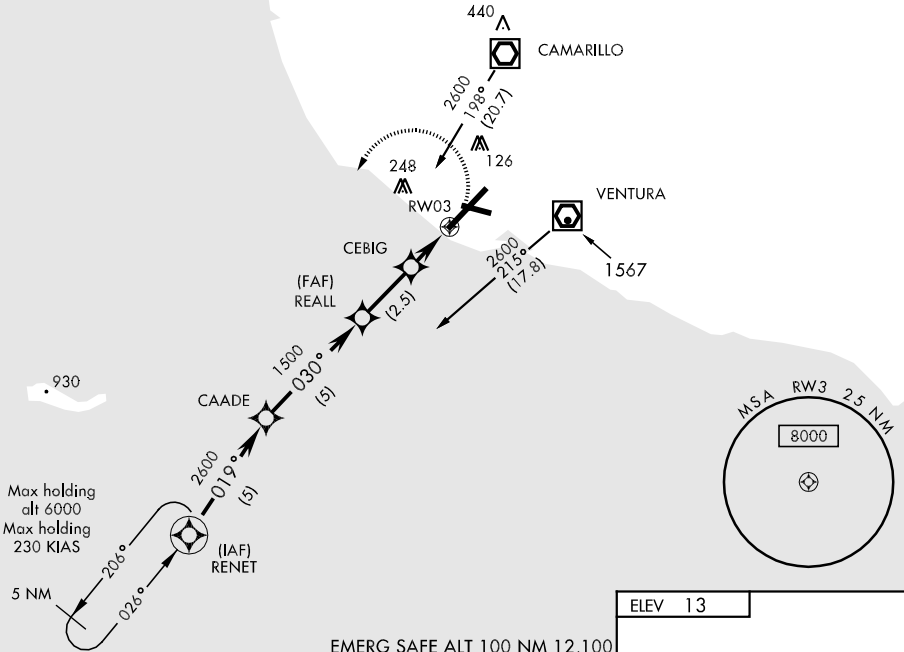
AL-925 [USN]

<p>▼ * When ALS inop, increase CAT ABCD vis to 1 mile. ** Circling not authorized E of Rwy 3-21. *** When ALS inop, increase CAT ABCD vis to ½ mile.</p>	SALS	<p>MISSED APPROACH: Climb to 500, then climbing left turn to 2600 direct RENET and hold.</p>
	(A2)	

ATIS *	POINT MUGU APP CON	POINT MUGU TOWER *	GND CON	CLNC DEL	ASR/PAR
125.55 363.05	128.65 307.275	124.85 290.375	121.6 360.2	120.75 279.55	

For uncompensated BARO-VNAV systems, LNAV/VNAV NA below -15° C (5° F) or above 42° C (108° F).

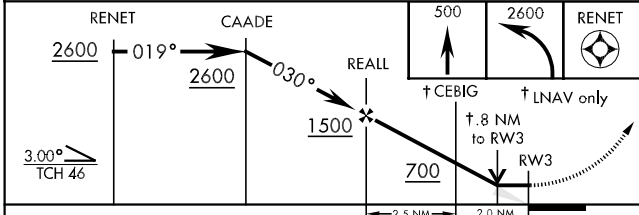
DME/DME RNP-0.3 NA



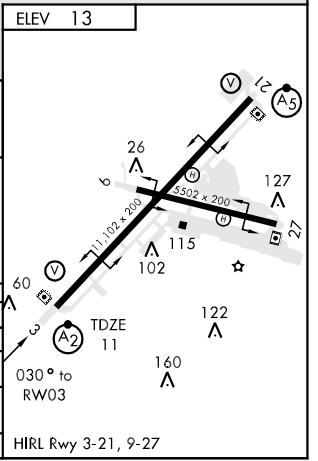
SW-3, 22 OCT 2009 to 19 NOV 2009

SW-3, 22 OCT 2009 to 19 NOV 2009

EMERG SAFE ALT 100 NM 12,100



CATEGORY	A	B	C	D
LNAV MDA *		320-¾	309 (400-¾)	
LNAV/VNAV* DA		321-¾	310 (400-¾)	
CIRCLING **	420-1 407 (500-1)	480-1 467 (500-1)	480-1½ 467 (500-1½)	580-2 567 (600-2)
S-PAR 3 ***	111-¼	100 (100-¼)	GS 3.0°	



OXNARD, CALIFORNIA  
09295

34°07'N-119°07'W

POINT MUGU NAS(KNTD)  
(NAVAL BASE VENTURA CO)  
**RNAV (GPS) RWY 3**