

OXNARD, CALIFORNIA

# RNAV (GPS) RWY 21

POINT MUGU NAS (KNTD)  
(NAVAL BASE VENTURA CO)

AL-925 [USN]

APCH CRS	Rwy Idg	11,102
210°	TDZE	13
	Arpt Elev	13

- \* When ALS inop, increase CAT ABC vis to 1 mile, CAT D vis to 1 1/4 miles.
- \*\* When ALS inop, increase CAT ABCD vis to 1 mile.
- \*\*\* Circling not authorized E of Rwy 3-21.

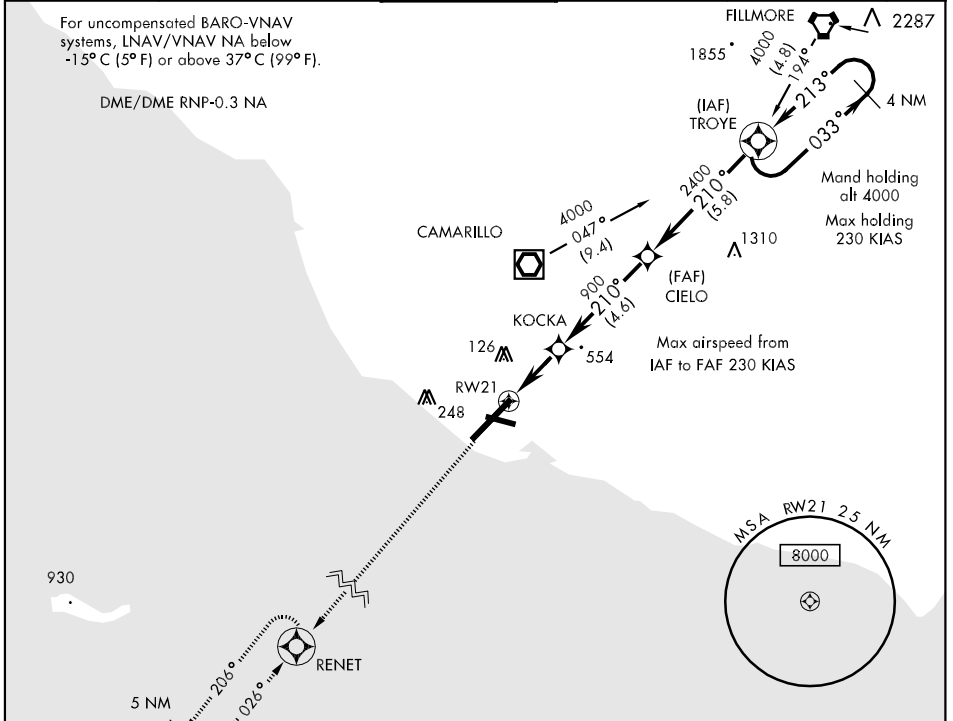


MISSED APPROACH: Climb to 2600 direct RENET and hold.

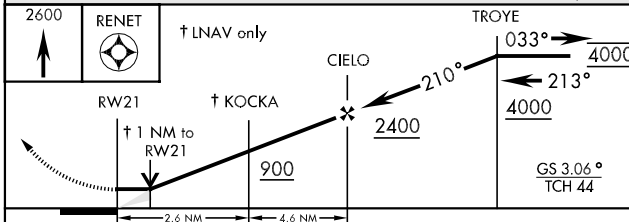
ATIS *	POINT MUGU APP CON	POINT MUGU TOWER *	GND CON	CLNC DEL	ASR/PAR
125.55 363.05	128.65 307.275	124.85 290.375	121.6 360.2	120.75 279.55	

For uncompensated BARO-VNAV systems, LNAV/VNAV NA below -15°C (5°F) or above 37°C (99°F).

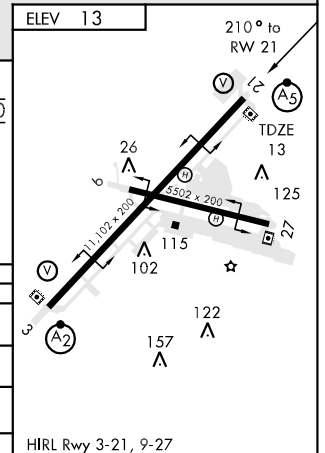
DME/DME RNP-0.3 NA



2600	RENET	† LNAV only	TROYE



CATEGORY	A	B	C	D
LNAV MDA*	380-3/4	367 (400-3/4)		380-1 (400-1)
LNAV/VNAV** DA		286-3/4 273 (300-3/4)		
CIRCLING ***	420-1 407 (500-1)	480-1 467 (500-1)	480-1 1/2 467 (500-1 1/2)	580-2 567 (600-2)
S-PAR 21	111-1/4	100 (100-3/4)	GS 3.0°	



OXNARD, CALIFORNIA  
09295

34°07'N-119°07'W

POINT MUGU NAS (KNTD)  
(NAVAL BASE VENTURA CO)

# RNAV (GPS) RWY 21

SW-3, 22 OCT 2009 to 19 NOV 2009

SW-3, 22 OCT 2009 to 19 NOV 2009