

OXNARD, CALIFORNIA

# ILS or LOC/DME RWY 21

LOC I-RRG <b>109.3</b> Chan 30	APCH CRS <b>210°</b>	Rwy Idg <b>11,102</b> TDZE <b>13</b> Arpt Elev <b>13</b>
--------------------------------------	-------------------------	--

AL-925 [USN]

POINT MUGU NAS  
(NAVAL BASE VENTURA CO)(KNTD)

▼ \* When ALS inop, increase vis (ILS) CAT ABCD to ¾ mile, (LOC) CAT ABC to 1 mile, CAT D to 1¼ miles.  
\*\* Circling not authorized E of Rwy 3-21 or when alternate MAP Rwy 21 in use.

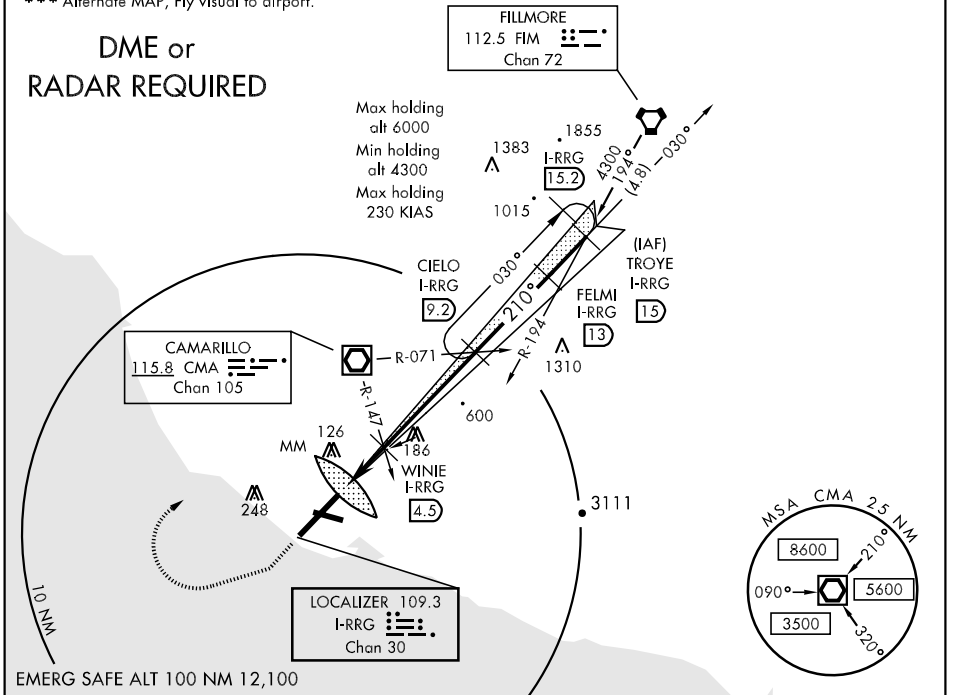


MISSED APPROACH: Climb to 500 via hdg 210°, then climbing right turn to 3000 via hdg 245° then climbing right turn to 5000 direct CMA VOR/DME, then via CMA R-071 to CIELO and hold.

ATIS * <b>125.55 363.05</b>	POINT MUGU APP CON <b>128.65 307.275</b>	POINT MUGU TOWER * <b>124.85 290.375</b>	GND CON <b>121.6 360.2</b>	CLNC DEL <b>120.75 279.55</b>	ASR/PAR
--------------------------------	---	---	-------------------------------	----------------------------------	---------

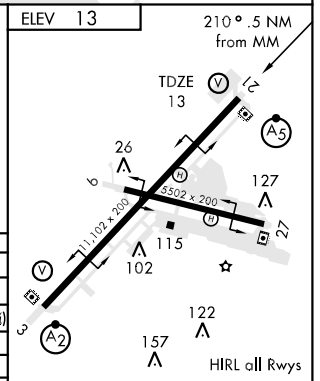
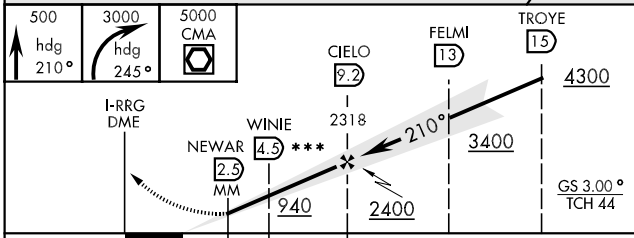
\*\*\* Alternate MAP, Fly visual to airport.

## DME or RADAR REQUIRED



SW-3, 22 OCT 2009 to 19 NOV 2009

SW-3, 22 OCT 2009 to 19 NOV 2009



CATEGORY	A	B	C	D
S-ILS 21*		213-½	200 (200-½)	
S-LOC 21*	360-½	347 (400-½)		360-¾ 347 (400-¾)
S-ILS 21***	886-2	873 (900-2)		
S-LOC 21***	940-2	927 (1000-2)		
CIRCLING **	420-1 407 (500-1)	480-1 467 (500-1)	480-1½ 467 (500-1½)	580-2 567 (600-2)
S-PAR 21		113-½	100 (100-½)	GS 3.0°

FAF to MAP 6.7 NM					
Knots	60	90	120	150	180
Min:Sec	6:42	4:28	3:21	2:41	2:14

OXNARD, CALIFORNIA  
Orig 09267

34°07'N-119°07'W

POINT MUGU NAS(KNTD)  
(NAVAL BASE VENTURA CO)

# ILS or LOC/DME RWY 21