


FILLMORE TWO DEPARTURE (FIM2 • FIM)

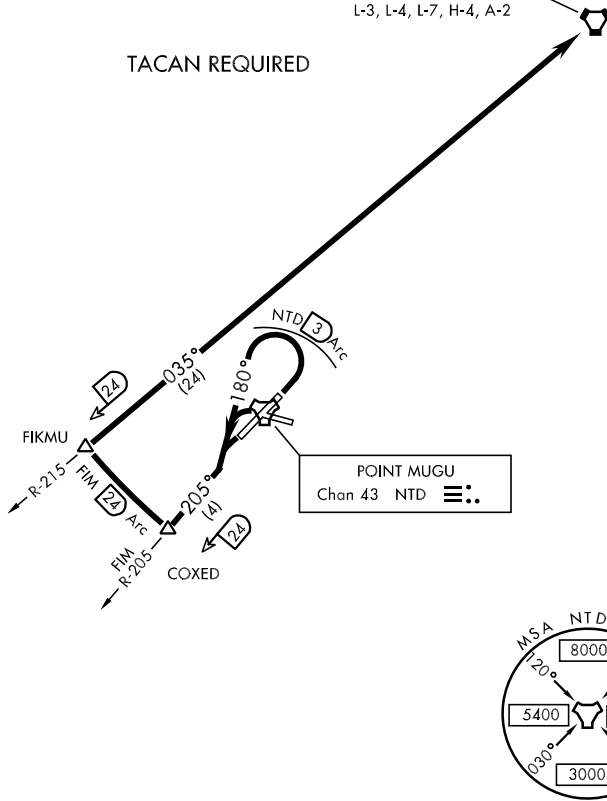
OXNARD, CALIFORNIA


ATIS ★ 125.55 363.05
 CLNC DEL
 120.75 279.55
 GND CON
 121.6 360.2
 POINT MUGU TOWER ★
 124.85 290.375
 POINT MUGU DEP CON
 128.65 307.275

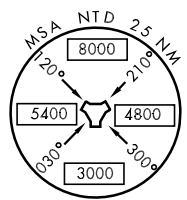
SHL-925 [USN]

FILLMORE
 112.5 FIM 
 Chan 72
 L-3, L-4, L-7, H-4, A-2

TACAN REQUIRED



POINT MUGU
 Chan 43 NTD 



SW-3, 22 OCT 2009 to 19 NOV 2009

SW-3, 22 OCT 2009 to 19 NOV 2009

DEPARTURE ROUTE DESCRIPTION

TAKE-OFF RWY 3: Climbing left turn to heading 180° within 3 DME of NTD TACAN, thence...

TAKE-OFF RWY 21, 27: Left turn, thence...

Intercept FIM VORTAC R-205 to COXED (FIM R-205/24 DME), arc SW of FIM to FIKMU (FIM R-215/24 DME) via FIM 24 mile arc, then via FIM R-215 to FIM, then via assigned routing.