

09267

POINT MUGU NAS (NAVAL BASE VENTURA CO) (KNTD)

DOYLE-SEVEN DEPARTURE (DOYLE 7 • DOYLE)

OXNARD, CALIFORNIA

SHL-925 [USN]

TACAN REQUIRED

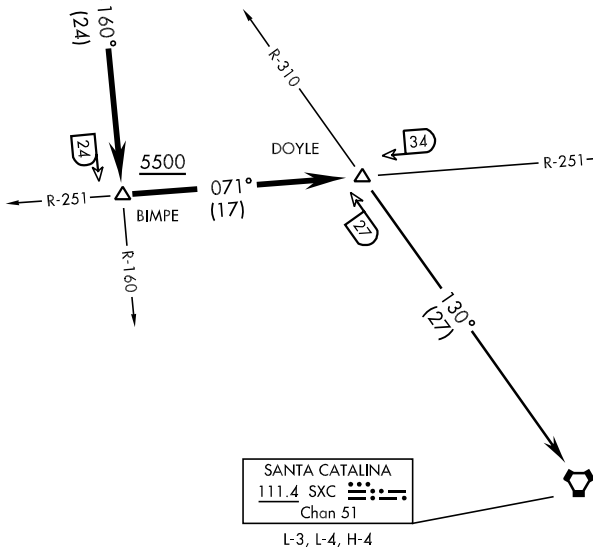
ATIS ★ 125.55 363.05
 CLNC DEL
 120.75 279.55
 GND CON
 121.6 360.2
 POINT MUGU TOWER ★
 124.85 290.375
 POINT MUGU DEP CON
 128.65 307.275

554

POINT MUGU
 Chan 43 NTD

▲
 1522

SEAL BEACH
 115.7 SLI
 Chan 104



SW-3, 22 OCT 2009 to 19 NOV 2009

SW-3, 22 OCT 2009 to 19 NOV 2009

DEPARTURE ROUTE DESCRIPTION

TAKE-OFF RWY 3: Climbing left turn within 3 DME of NTD TACAN, direct NTD, thence...

TAKE-OFF RWY 21, 27: Left turn, thence...

Intercept NTD R-160 and via NTD R-160 to BIMPE (NTD R-160/24 DME), then via SLI VORTAC R-251 to DOYLE, then via assigned routing. Cross BIMPE at or above 5500.

SANTA CATALINA TRANSITION (DOYLE 7 • SXC): DOYLE (SLI R-251/34 DME) to SANTA CATALINA VORTAC via SXC R-310. Then as filed.

DOYLE-SEVEN DEPARTURE (DOYLE 7 • DOYLE)

OXNARD, CALIFORNIA

POINT MUGU NAS (NAVAL BASE VENTURA CO) (KNTD)