


VORTAC DBQ 115.8 Chan 105	APP CRS 304°	Rwy Idg TDZE 1062 Apt Elev 1077
--	------------------------	---

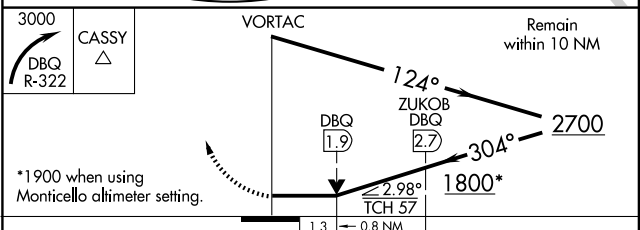
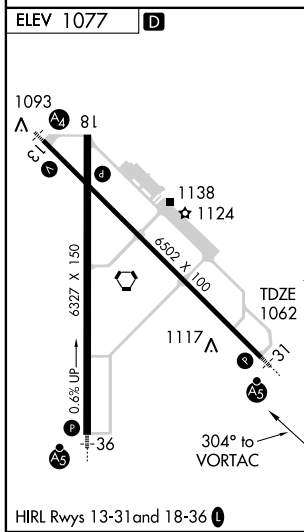
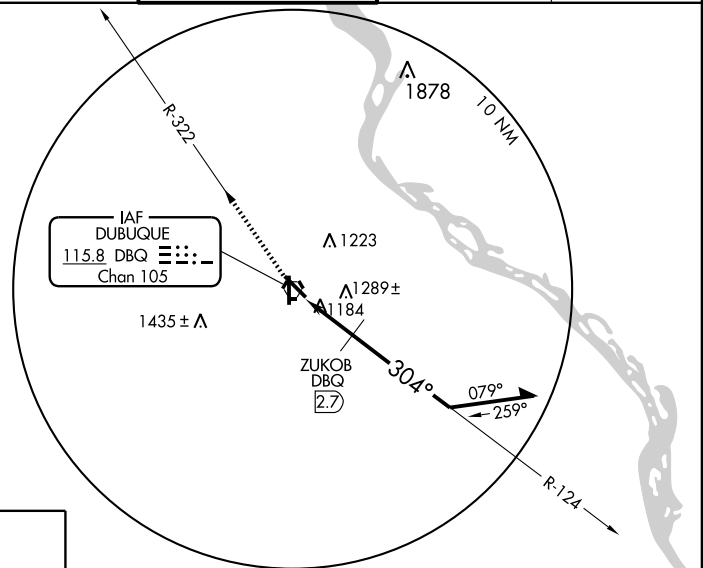
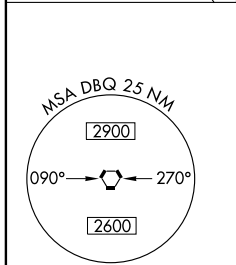
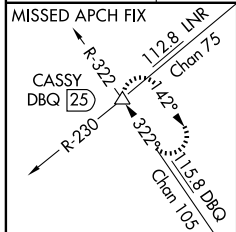
VOR RWY 31

DUBUQUE RGNL (DBQ)

V Visibility reduction by helicopters NA.
A When local altimeter setting not received use Monticello altimeter setting increase all MDAs 100 feet and increase visibility S-31 Cat C and D 1/2 mile, circling Cat B 1/4 mile and Cat C and D 1/2 mile, ZUKOB fix minimums S-31 Cat C and D 1/4 mile, and circling Cat C 1/4 mile.
 VDP NA when using Monticello altimeter setting.
 For inoperative MALSR, increase S-31 Cat A and B visibility to 1 mile, increase ZUKOB fix minimums Cat A and B visibility to 1 mile.
 For inoperative MALSR when using Monticello altimeter setting increase Cat A visibility for S-31 and ZUKOB fix minimums to 1 mile.

MALSR

MISSED APPROACH: Climbing right turn to 3000 via DBQ R-322 to CASSY Int/DBQ 25 DME and hold.

ATIS 127.25	CHICAGO CENTER 133.95 281.4	DUBUQUE TOWER* 119.5 (CTAF) 254.4	GND CON 121.8	UNICOM 122.95
-----------------------	---------------------------------------	---	-------------------------	-------------------------



CATEGORY	A	B	C	D
S-31	1800-3/4	738 (800-3/4)	1800-1 1/2 738 (800-1 1/2)	1800-1 3/4 738 (800-1 3/4)
CIRCLING	1800-1	723 (800-1)	1800-2 723 (800-2)	1800-2 1/4 723 (800-2 1/4)
ZUKOB FIX MINIMUMS				
S-31	1540-3/4 478 (500-3/4)			1540-1 478 (500-1)
CIRCLING	1580-1 503 (600-1)	1600-1 523 (600-1)	1600-1 1/2 523 (600-1 1/2)	1640-2 563 (600-2)

NC-3, 22 OCT 2009 to 19 NOV 2009

NC-3, 22 OCT 2009 to 19 NOV 2009