

RNAV (GPS) RWY 31

DUBUQUE RGNL (DBQ)

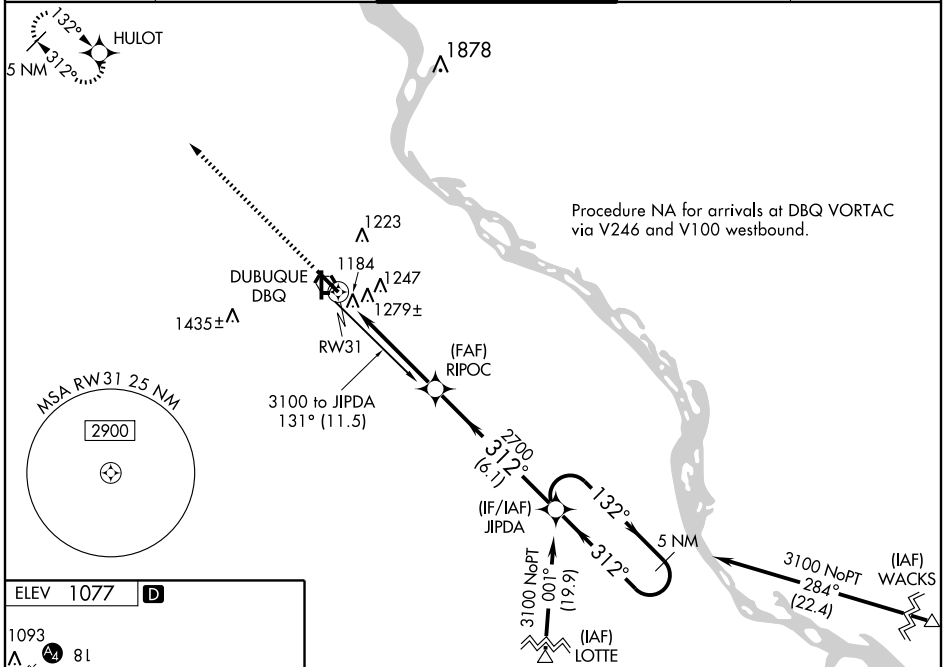
WAAS Chan 69400 W31A	APP CRS 312°	Rwy Idg 6302 TDZE 1062 Apt Elev 1077
--	------------------------	---

⚠ For inoperative MALSR, increase LPV all Cats visibility to 1½ and LNAV Cats A, B visibility to 1.
⚠ Baro-VNAV NA when using Monticello altimeter setting.
 For uncompensated Baro-VNAV systems, LNAV/VNAV NA below -17°C (2°F) or above 46°C (116°F).
 DME/DME RNP-0.3 NA. VDP NA when using Monticello altimeter setting.
 If local altimeter setting not received, use Monticello altimeter setting and increase all DAs/MDAs 100 feet.

MALSR 

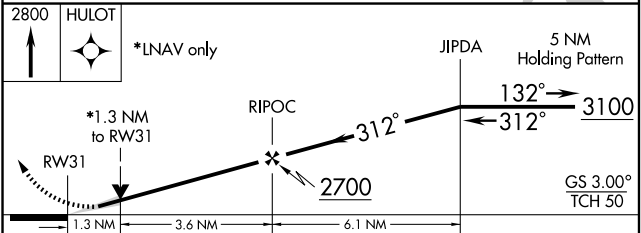
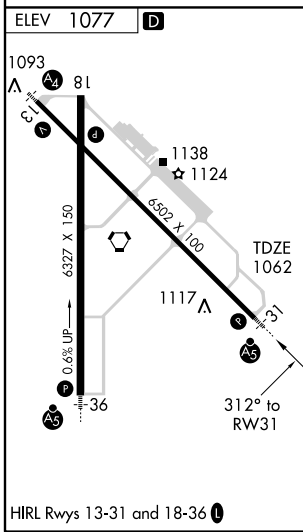
MISSED APPROACH: Climb to 2800 direct HULOT and hold.

ATIS 127.25	CHICAGO CENTER 133.95 281.4	DUBUQUE TOWER* 119.5 (CTAF) 0 254.4	GND CON 121.8	UNICOM 122.95
-----------------------	---------------------------------------	---	-------------------------	-------------------------



NC-3, 22 OCT 2009 to 19 NOV 2009

NC-3, 22 OCT 2009 to 19 NOV 2009



CATEGORY	A	B	C	D
LPV DA	1481-1		419 (500-1)	
LNAV/ VNAV DA	1603-1½		541 (600-1½)	
LNAV MDA	1540-¾	478 (500-¾)		1540-1 478 (500-1)
CIRCLING	1620-2	543 (600-2)		1640-2 563 (600-2)