

DUBUQUE, IOWA

AL-923 (FAA)

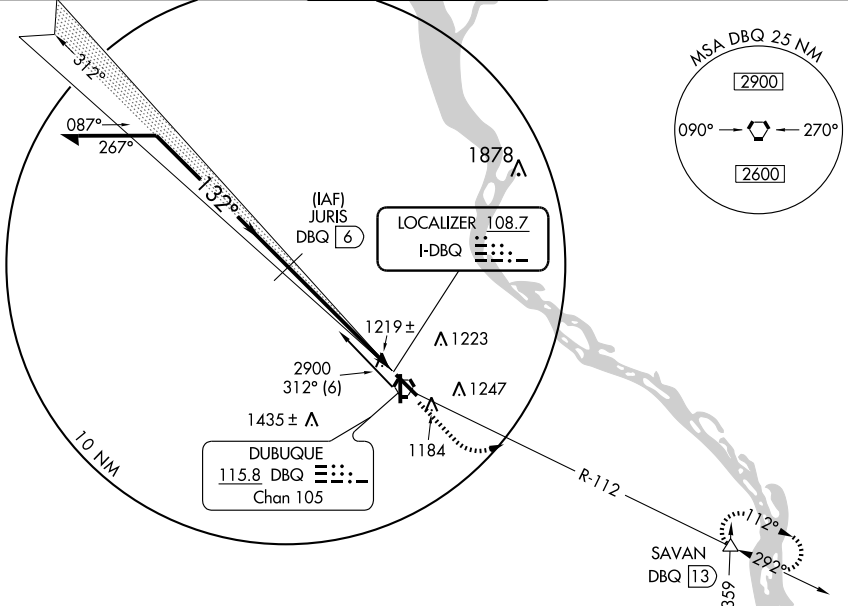
LOC/DME BC RWY 13

DUBUQUE RGNL (DBQ)

LOC I-DBQ 108.7	APP CRS 132°	Rwy Idg 6502
		TDZE 1076
		Apt Elev 1076

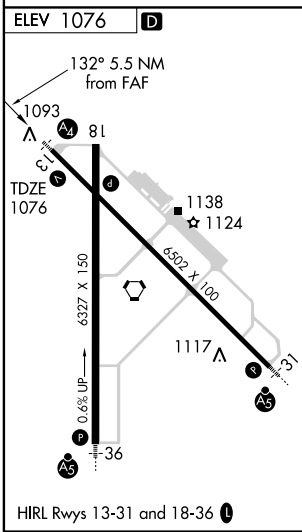
DME from DBQ VORTAC. Simultaneous reception of I-DBQ and DBQ DME required. Inoperative table does not apply to S-13 Cat. C.	MALS 	MISSED APPROACH: Climb to 2500, then climbing left turn to 3300 via DBQ R-112 to SAVAN Int/13 DME and hold.

ATIS 127.25	CHICAGO CENTER 133.95 281.4	DUBUQUE TOWER * 119.5 (CTAF) 254.4	GND CON 121.8	UNICOM 122.95
-----------------------	---------------------------------------	--	-------------------------	-------------------------

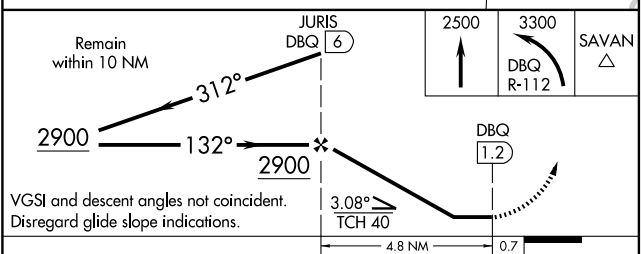


NC-3, 22 OCT 2009 to 19 NOV 2009

NC-3, 22 OCT 2009 to 19 NOV 2009



BACK COURSE



CATEGORY	A	B	C	D
S-13	1480-3/4 404 (500-3/4)		1480-1/4 404 (500-1/4)	
CIRCLING	1580-1 504 (600-1)		1580-1 1/2 504 (600-1 1/2)	1640-2 564 (600-2)

DUBUQUE, IOWA
Amdt 5C 08325

42°24'N-90°43'W

DUBUQUE RGNL (DBQ) LOC/DME BC RWY 13