

LEXINGTON, NEBRASKA

AL-921 (FAA)

WAAS CH <b>49003</b> <b>W32A</b>	APP CRS <b>316°</b>	Rwy Idg TDZE <b>2408</b> Apt Elev <b>2413</b>
--	------------------------	---

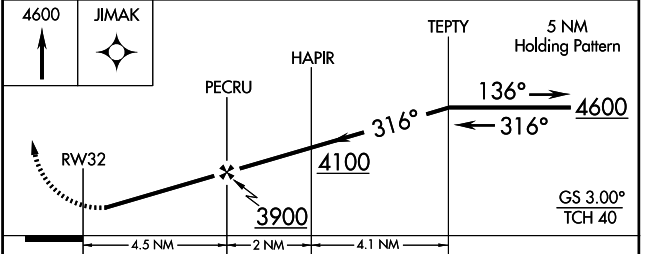
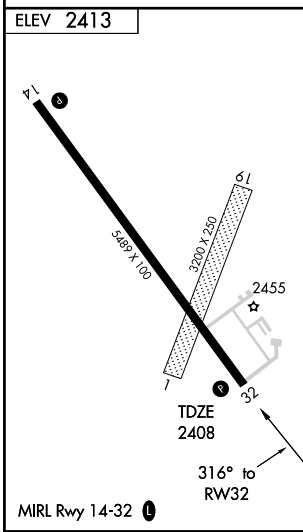
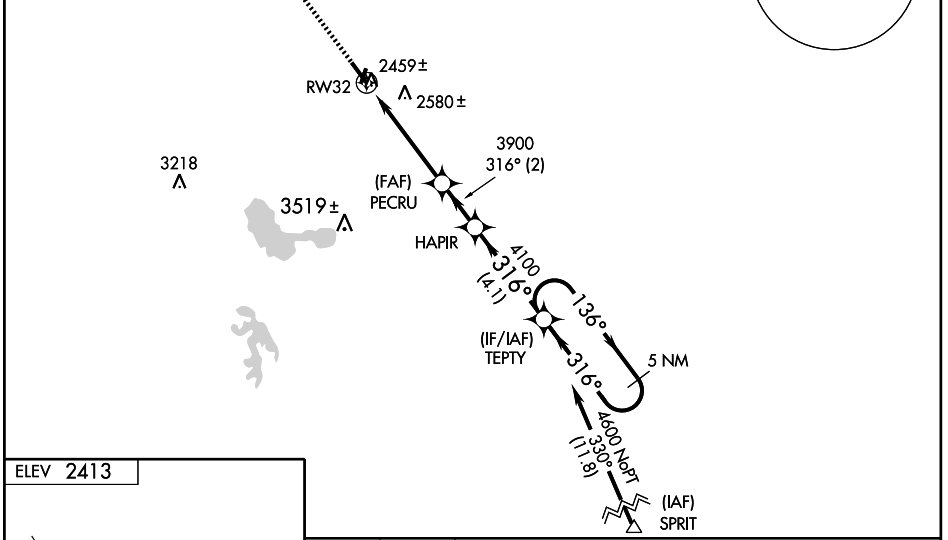
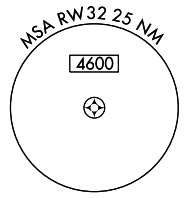
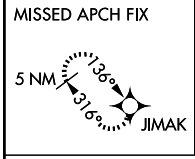
# RNAV (GPS) RWY 32

LEXINGTON/JIM KELLY FIELD (LXN)

**BARO-VNAV NA** when using Brewster Field altimeter setting. For uncompensated BARO-VNAV systems, LNAV/VNAV NA below -19°C (-2°F) or above 43°C (109°F). DME/DME RNP-0.3 NA. Visibility reduction by helicopters NA. If local altimeter setting not received, use Brewster Field altimeter setting and increase LPV DA to 2773, increase LNAV/VNAV DA to 2931 and increase all MDAs 80 feet.

**MISSED APPROACH:**  
Climb to 4600 direct JIMAK and hold.

AWOS-3 <b>121.025</b>	DENVER CENTER <b>132.7 397.85</b>	UNICOM <b>123.0</b> (CTAF) <b>0</b>
--------------------------	--------------------------------------	--



CATEGORY	A	B	C	D
LPV DA		2693-1	285 (300-1)	
LNAV/VNAV DA	2729-1¼ 321 (400-1¼)			
LNAV MDA	2860-1	452 (500-1)	2860-1¼ 452 (500-1¼)	2860-1½ 452 (500-1½)
CIRCLING	2860-1 447 (500-1)	2940-1 527 (600-1)	2940-1½ 527 (600-1½)	2980-2 567 (600-2)

LEXINGTON, NEBRASKA  
Amdt 1 07130

40° 47' N-99° 47' W

# LEXINGTON/JIM KELLY FIELD (LXN) RNAV (GPS) RWY 32

NC-2, 22 OCT 2009 to 19 NOV 2009

NC-2, 22 OCT 2009 to 19 NOV 2009