

RATON, NEW MEXICO

AL-920 (FAA)

VORTAC CIM 116.4 Chan 111	APP CRS 037°	Rwy Idg TDZE Apt Elev	6328 6346 6352
---	------------------------	-----------------------------	---

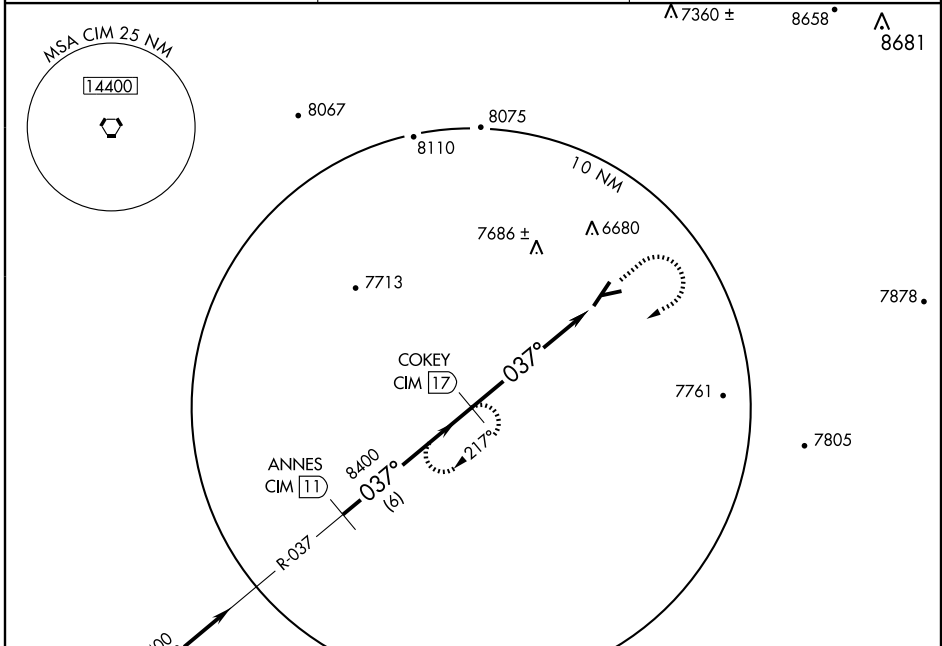
VOR/DME RWY 2

RATON MUNI/CREWS FIELD (RTN)

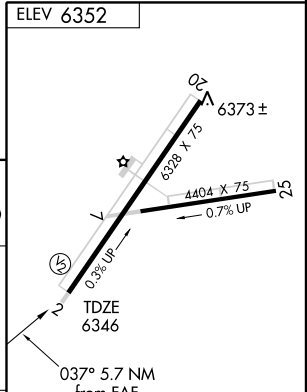
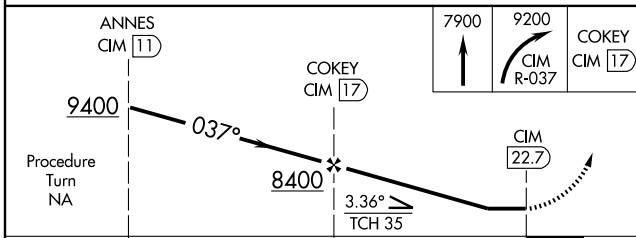
⚠ Cat. D circling not authorized west of Rwy 2-20.

⚠ MISSED APPROACH: Climb to 7900 then climbing right turn to 9200 via CIM R-037 to COKEY 17 DME and hold.

ASOS 118.375	ALBUQUERQUE CENTER 132.8 346.35	UNICOM 122.8 (CTAF) 0*
------------------------	---	----------------------------------



IAF
CIMARRON
116.4 CIM
Chan 111



CATEGORY	A	B	C	D
S-2	7720-1¼ 1374 (1400-1¼)	7720-1½ 1374 (1400-1½)	7720-3	1374 (1400-3)
CIRCLING	7720-1¼ 1368 (1400-1¼)	7720-1½ 1368 (1400-1½)	7720-3	1368 (1400-3)

MIRL Rwy 2-20 and 7-25 **0**

Knots	60	90	120	150	180
Min:Sec					

RATON, NEW MEXICO
Amdt 7 07074

36°44'N-104°30'W

VOR/DME RWY 2

SW-1, 22 OCT 2009 to 19 NOV 2009

SW-1, 22 OCT 2009 to 19 NOV 2009