

RATON, NEW MEXICO

AL-920 (FAA)

NDB RWY 2

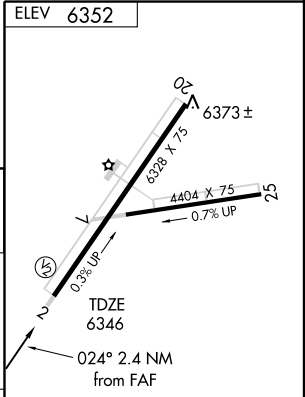
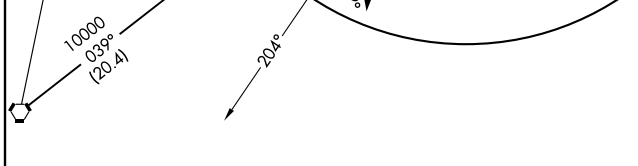
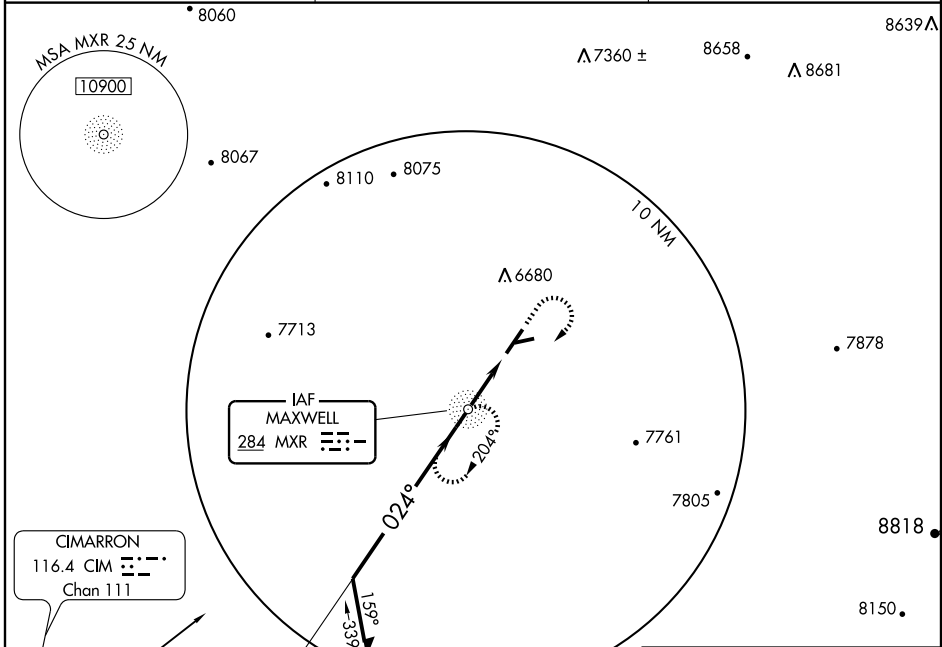
RATON MUNI/CREWS FIELD (RTN)

NDB MXR 284	APP CRS 024°	Rwy Idg TDZE Apt Elev	6328 6346 6352
-----------------------	------------------------	-----------------------------	---

NA Cat. D circling not authorized west of Rwy 2-20.

MISSED APPROACH: Climb to 7900 then climbing right turn to 9000 direct MXR NDB and hold.

ASOS 118.375	ALBUQUERQUE CENTER 132.8 346.35	UNICOM 122.8 (CTAF) 0*
------------------------	---	----------------------------------



Remain within 10 NM	NDB	7900	9000	MXR 284
9000	204°	3.60° TCH 35	7300	
VGSI and descent angles not coincident.		2.4 NM		

CATEGORY	A	B	C	D	MIRL Rwy 2-20 and 7-25
S-2	6720-1	374 (400-1)	6720-1 ¼	374 (400-1 ¼)	FAF to MAP 2.4 NM
CIRCLING	6820-1 468 (500-1)	6880-1 528 (600-1)	6880-1 ½ 528 (600-1 ½)	6920-2 568 (600-2)	Knots: 60 90 120 150 180 Min:Sec: 2:24 1:36 1:12 0:58 0:48

RATON, NEW MEXICO
Amdt 5 07074

36°44'N-104°30'W

RATON MUNI/ CREWS FIELD (RTN)
NDB RWY 2

SW-1, 22 OCT 2009 to 19 NOV 2009

SW-1, 22 OCT 2009 to 19 NOV 2009