

RATON, NEW MEXICO

AL-920 (FAA)

# GPS RWY 25

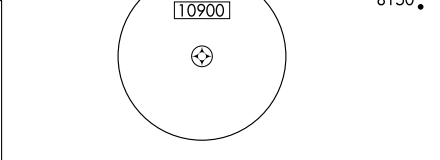
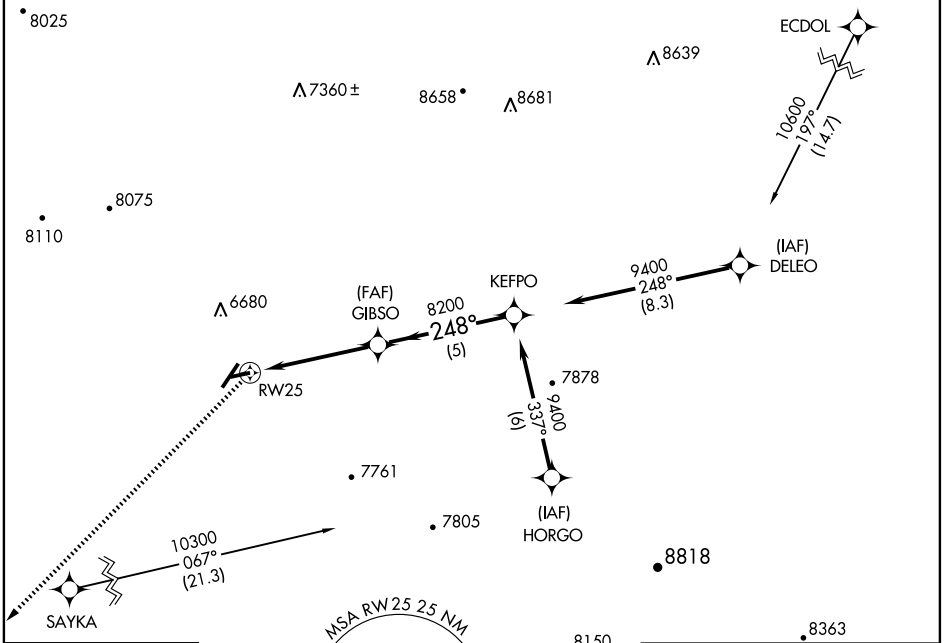
RATON MUNI/CREWS FIELD (RTN)

APP CRS <b>248°</b>	Rwy Idg <b>4404</b>
	TDZE <b>6338</b>
	Apt Elev <b>6352</b>

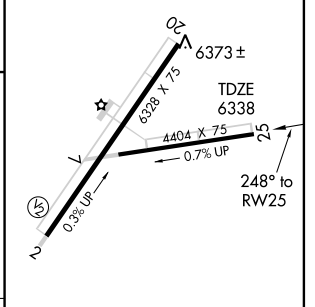
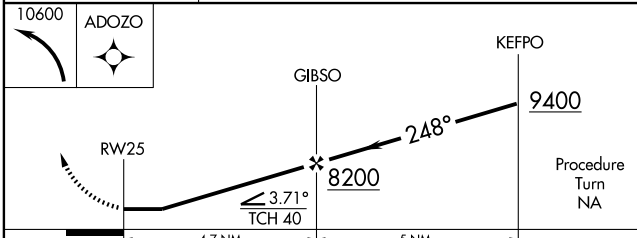
**NA** Cat. D circling not authorized west of Rwy 2-20.

MISSED APPROACH: Climbing left turn to 10600 direct ADOZO WP and hold.

ASOS <b>118.375</b>	ALBUQUERQUE CENTER <b>132.8 346.35</b>	UNICOM <b>122.8 (CTAF) 0*</b>
------------------------	---	----------------------------------



ELEV 6352	8363
-----------	------



CATEGORY	A	B	C	D
S-25	6640-1 302 (300-1)			
CIRCLING	6820-1 468 (500-1)	6880-1 528 (600-1)	6880-1½ 528 (600-1½)	6920-2 568 (600-2)

MIRL Rwy 2-20 and 7-25 0

RATON, NEW MEXICO  
Amdt 1 07074

36°44'N-104°30'W

RATON MUNI/CREWS FIELD (RTN)

# GPS RWY 25

SW-1, 22 OCT 2009 to 19 NOV 2009

SW-1, 22 OCT 2009 to 19 NOV 2009