

TACAN	NOG	APCH CRS	Rwy Idg	8000
Chan	63	146°	TDZE	50
			Arpt Elev	50

AL-918 [USN]

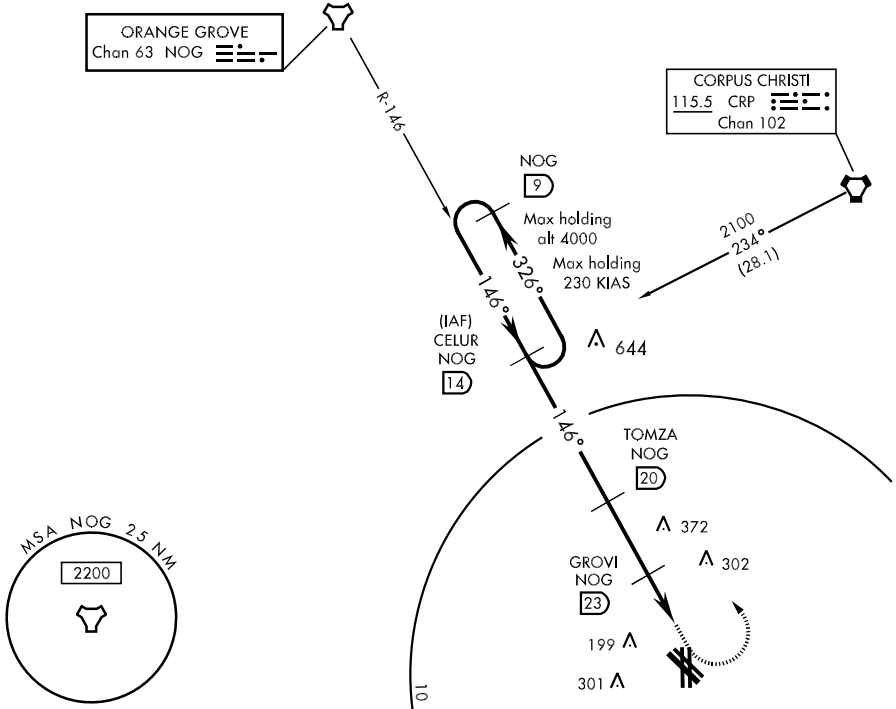
KINGSVILLE NAS (KNQI)

MISSED APPROACH: Climbing left turn to 1800, intercept NOG TACAN R-146 to CELUR and hold.

ATIS ★ 276.2	KINGSVILLE APP CON 119.9 290.45	KINGSVILLE TOWER ★ 124.1 377.05	GND CON 239.05	CLNC DEL 328.4	ASR/PAR
-----------------	------------------------------------	------------------------------------	-------------------	-------------------	---------

ORANGE GROVE  
Chan 63 NOG

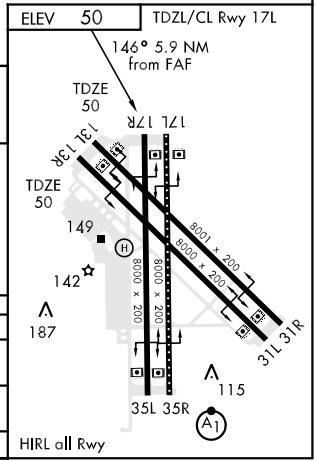
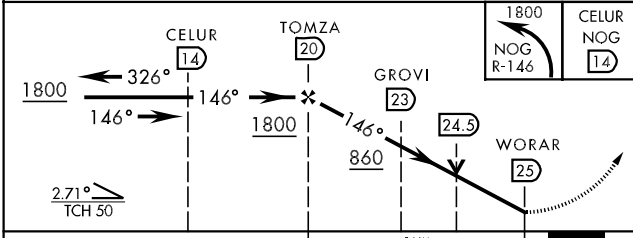
CORPUS CHRISTI  
115.5 CRP   
Chan 102



SC-3, 22 OCT 2009 to 19 NOV 2009

SC-3, 22 OCT 2009 to 19 NOV 2009

EMERG SAFE ALT 100 NM 16,000



CATEGORY	A	B	C	D
S-17R	560-1¼ 510	(600-1¼)	560-1½ 510 (600-1½)	560-1¾ 510 (600-1¾)
CIRCLING	560-1¼ 510	(600-1¼)	560-1½ 510 (600-1½)	620-2 570 (600-2)
S-PAR-17R	150-½	100	(100-½)	GS 3.00°