

TACAN NQI Chan <b>125</b>	APCH CRS <b>360°</b>	Rwy Idg TDZE Arpt Elev <b>8000</b> <b>48</b> <b>50</b>
------------------------------	-------------------------	---

AL-918 [USN]

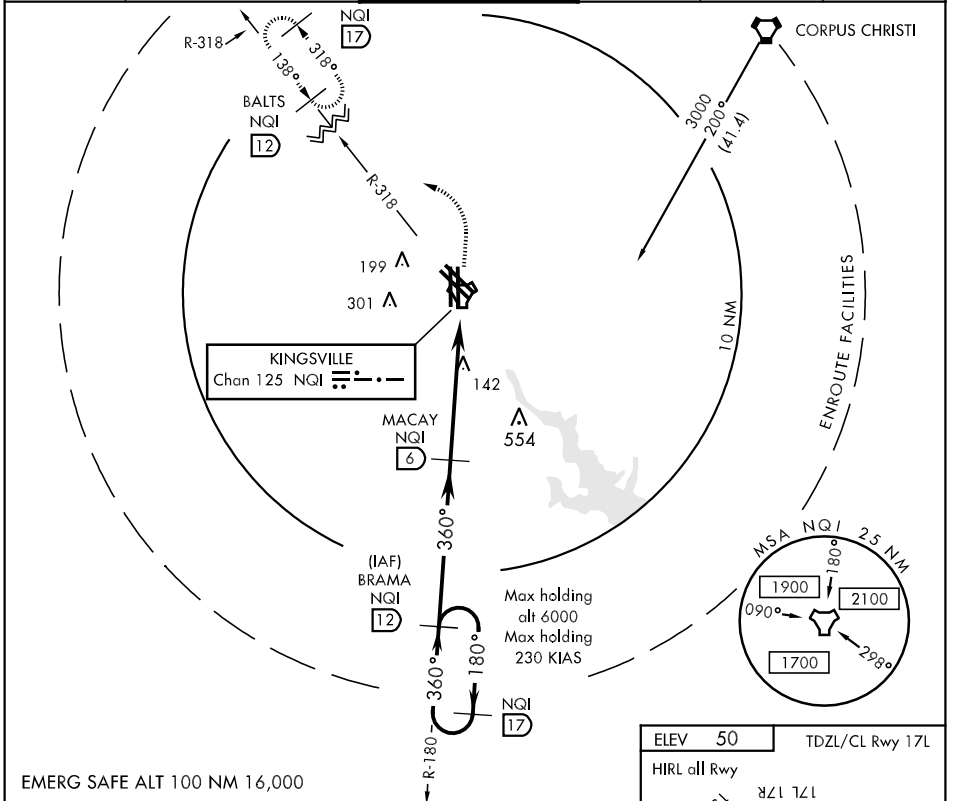
KINGSVILLE NAS (KNQI)

\* When ALS inop, increase vis CAT ABC to 1 mile, CAT D to 1 1/2 miles.  
 \*\* When ALS inop, increase vis CAT ABCD to 1/2 mile.



MISSED APPROACH: Climb to 500, then climbing left turn to 3000 via NQI TACAN R-318 to BALTS and hold.

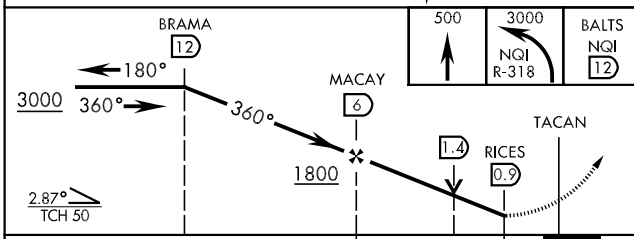
ATIS ★ <b>276.2</b>	KINGSVILLE APP CON <b>119.9 290.45</b>	KINGSVILLE TOWER ★ <b>124.1 377.05</b>	GND CON <b>239.05</b>	CLNC DEL <b>328.4</b>	ASR/PAR
------------------------	---	---	--------------------------	--------------------------	---------



SC-3, 22 OCT 2009 to 19 NOV 2009

SC-3, 22 OCT 2009 to 19 NOV 2009

EMERG SAFE ALT 100 NM 16,000



CATEGORY	A	B	C	D
S-35R *	400-1/2	352 (400-1/2)	400-3/4	352 (400-3/4)
CIRCLING	500-1	450 (500-1)	500-1 1/2	620-2
S-PAR 35R **	148-1/4	100	(100-1/4)	GS 3.00°

