

RNAV (GPS) RWY 9L

ORLANDO SANFORD INTL (SF'B)

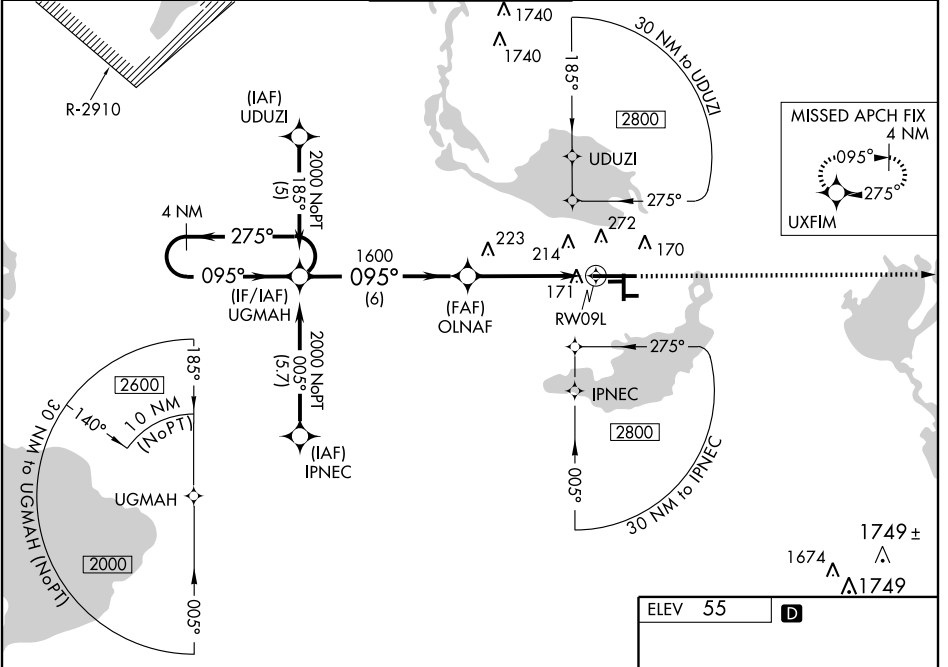
WAAS CH 78409 W09A	APP CRS 095°	Rwy ldg 8600 TDZE 55 Apt Elev 55
--	------------------------	---

Baro-VNAV NA when using Executive altimeter setting. For uncompensated Baro-VNAV systems, LNAV/VNAV NA below -1.5° C (5° F) or above 48° C (118° F). DME/DME RNP-0.3 NA. VDP NA when using Executive altimeter setting. When local altimeter setting not received, use Executive altimeter setting and increase LPV DA to 298, LNAV/VNAV DA to 543, all MDA 60 feet and LNAV/VNAV visibility ¼ mile all Cats. LNAV visibility Cats. C and D visibility ¼ mile.

MALSR

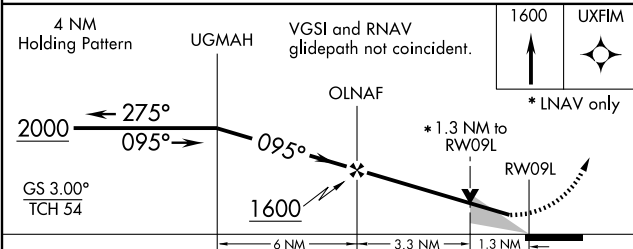
MISSED APPROACH:
Climb to 1600 direct UXFIM and hold.

ATIS 125.975	ORLANDO APP CON 121.1 351.9	SANFORD TOWER * 120.3(CTAF) 381.65	GND CON 121.35 381.65	CLNC DEL 123.975 *121.35 <small>*when tower closed</small>
------------------------	---------------------------------------	--	---------------------------------	---



SE-3, 22 OCT 2009 to 19 NOV 2009

SE-3, 22 OCT 2009 to 19 NOV 2009



ELEV 55 **D**

MIRL Rwy 18-36
HIRL Rwy 9L-27R and 9R-27L
MIRL Rwy 9C-27C
REIL Rwy 9C, 18, 27L and 36

CATEGORY	A	B	C	D
LPV DA		255-½	200 (200-½)	
LNAV/VNAV DA		500-1	445 (500-1)	
LNAV MDA	540-½ 485 (500-½)		540-¾ 485 (500-¾)	540-1 485 (500-1)
CIRCLING	580-1 525 (600-1)		580-1½ 525 (600-1½)	620-2 565 (600-2)