

ORLANDO, FLORIDA

AL-917 (FAA)

RNAV (GPS) RWY 27R

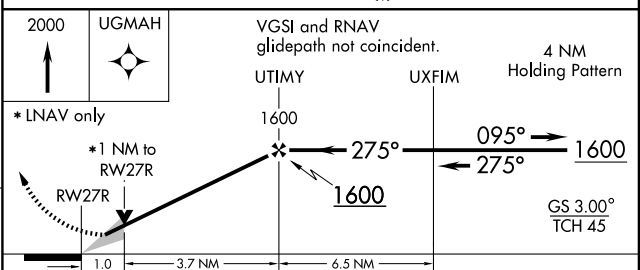
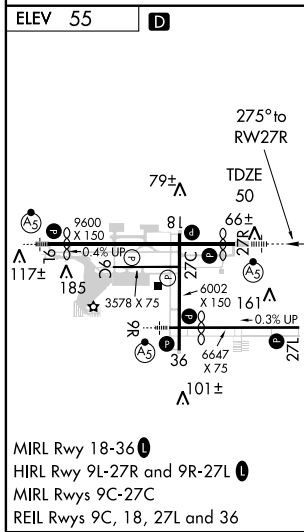
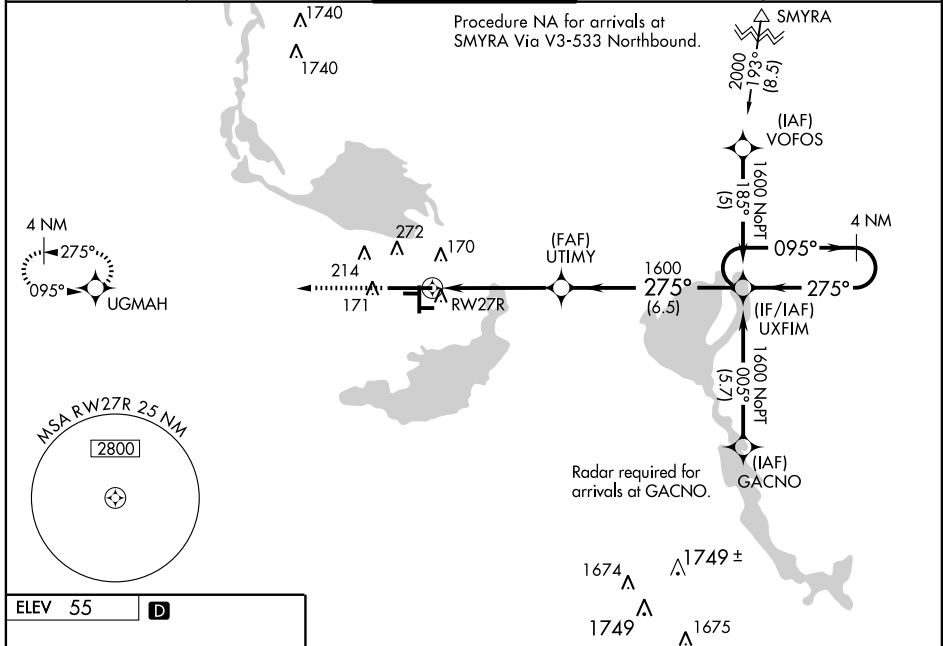
ORLANDO SANFORD INTL (SF'B)

WAAS CH 63209 W27A	APP CRS 275°	Rwy Idg TDZE Apt Elev	9000 50 55
--	------------------------	-----------------------------	---------------------------------------

⚠ Baro-VNAV NA when using Executive altimeter setting. For uncompensated Baro-VNAV systems, LNAV/VNAV NA below -15° C (5° F) or above 48° C (118° F). DME/DME RNP-0.3 NA. VDP NA when using Executive altimeter setting. When local altimeter setting not received, use Executive altimeter setting and increase LPV DA to 293, LNAV/VNAV DA to 464, all MDA 60 feet, LNAV/VNAV all Cats. and LNAV Cats. C and D visibility 1/4 mile.

MALS
 MISSED APPROACH: Climb to 2000 direct UGMAH and hold.

ATIS 125.975	ORLANDO APP CON 121.1 351.9	SANFORD TOWER* 120.3(CTAF) 0 381.65	GND CON 121.35 381.65	CLNC DEL 123.975 *121.35 <small>*when tower closed</small>
------------------------	---------------------------------------	--	---------------------------------	---



CATEGORY	A	B	C	D
LPV DA		250-1/2	200 (200-1/2)	
LNAV/VNAV DA		421-3/4	371 (400-3/4)	
LNAV MDA		420-1/2	370 (400-1/2)	420-1 370 (400-1)
CIRCLING	580-1	525 (600-1)	580-1/2 525 (600-1/2)	620-2 565 (600-2)

ORLANDO, FLORIDA
Amdt 1A 09015

28°47'N - 81°14'W

ORLANDO SANFORD INTL (SF'B) RNAV (GPS) RWY 27R

SE-3, 22 OCT 2009 to 19 NOV 2009

SE-3, 22 OCT 2009 to 19 NOV 2009