

ORLANDO, FLORIDA

AL-917 (FAA)

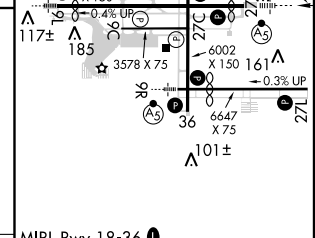
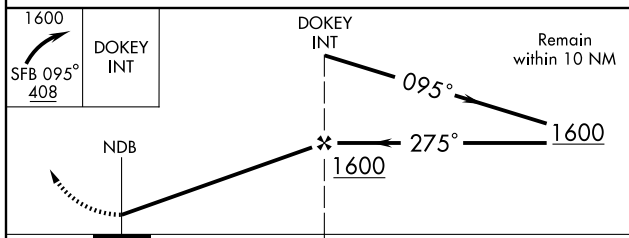
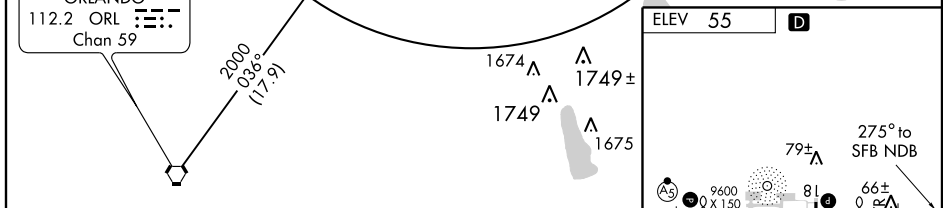
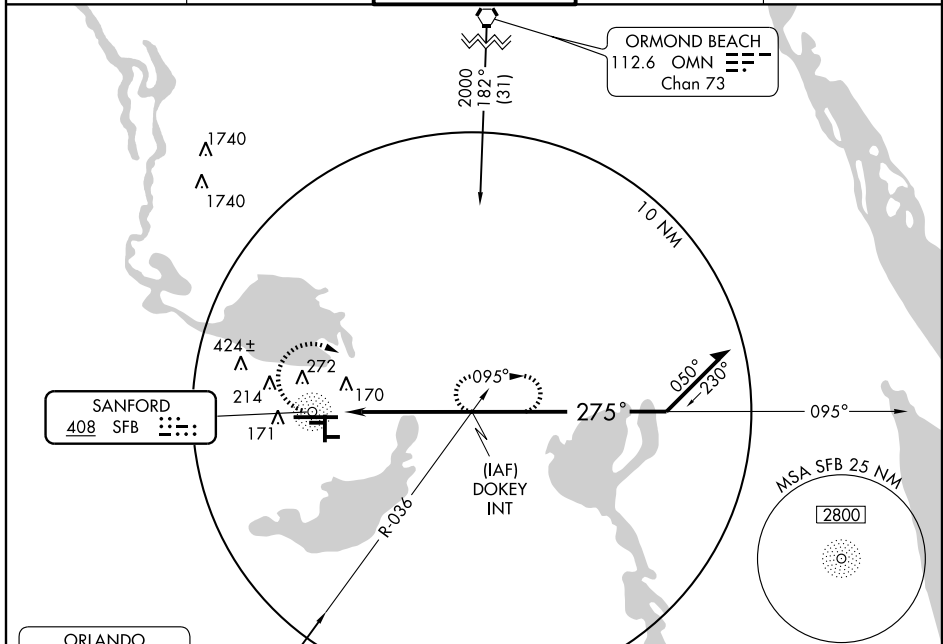
NDB-C

ORLANDO SANFORD INTL (SF'B)

NDB SFB 408	APP CRS 275°	Rwy Idg TDZE Apt Elev	N/A N/A 55
-----------------------	------------------------	-----------------------------	---------------------------------------

⚠ MISSED APPROACH: Climbing right turn to 1600 via SFB 095° course to DOKEY Int and hold.

ATIS 125.975	ORLANDO APP CON 121.1 351.9	SANFORD TOWER★ 120.3(CTAF) 0 381.65	GND CON 121.35 381.65	CLNC DEL 123.975 *121.35 *when tower closed
------------------------	---------------------------------------	---	---------------------------------	--



CATEGORY	A	B	C	D
CIRCLING	580-1	525 (600-1)	580-1½ 525 (600-1½)	620-2 565 (600-2)

MIRL Rwy 18-36
HIRL Rwy 9L-27R and 9R-27L
MIRL Rwys 9C-27C
REIL Rwys 9C, 18, 27L and 36

ORLANDO, FLORIDA
Orig 09015

28°47'N - 81°14'W

ORLANDO SANFORD INTL (SF'B)
NDB-C

SE-3, 22 OCT 2009 to 19 NOV 2009

SE-3, 22 OCT 2009 to 19 NOV 2009