

ORLANDO, FLORIDA

AL-917 (FAA)

**NDB-B**

ORLANDO SANFORD INTL (SFB)

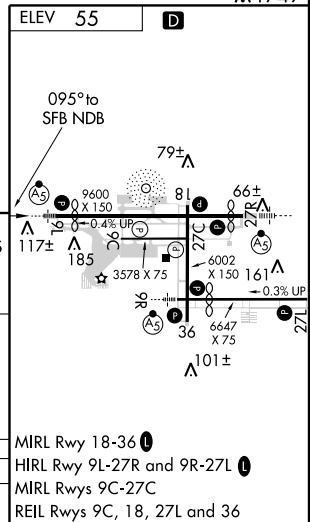
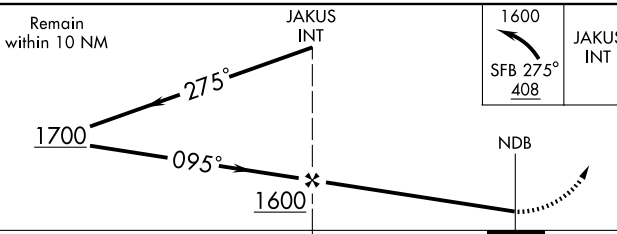
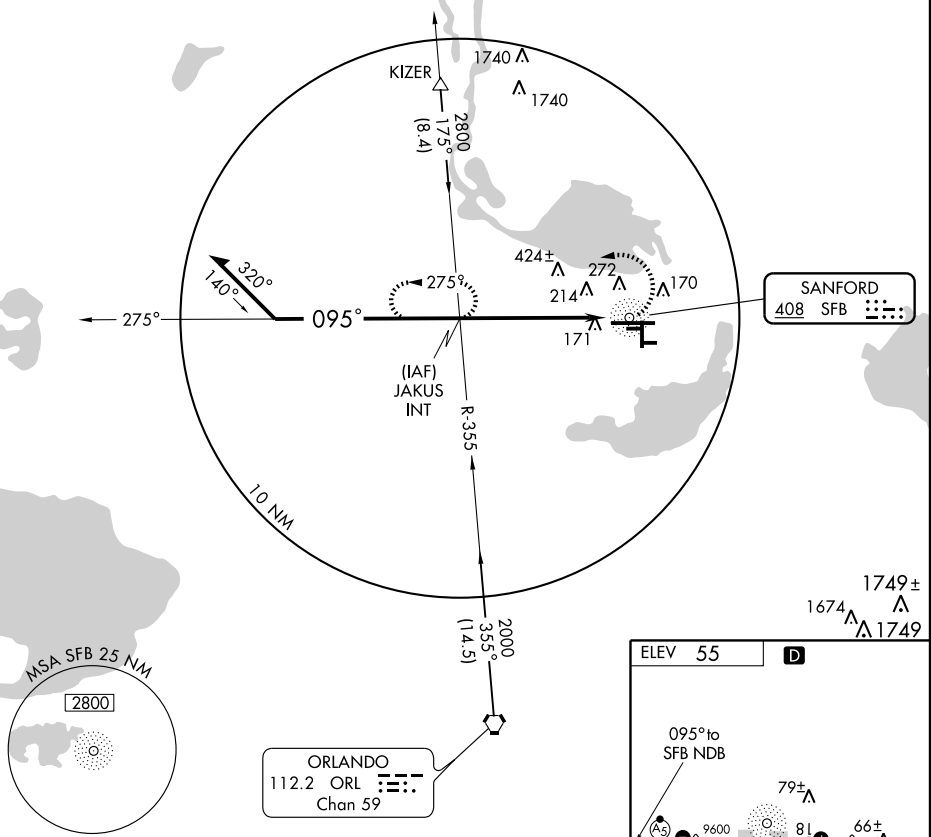
NDB SFB <b>408</b>	APP CRS <b>095°</b>	Rwy Idg TDZE Apt Elev	<b>N/A</b> <b>N/A</b> <b>55</b>
-----------------------	------------------------	-----------------------------	---------------------------------------

MISSED APPROACH: Climbing left turn to 1600 via SFB 275° course to JAKUS Int and hold.

ATIS <b>125.975</b>	ORLANDO APP CON <b>121.1 351.9</b>	SANFORD TOWER★ <b>120.3(CTAF) 0 381.65</b>	GND CON <b>121.35 381.65</b>	CLNC DEL <b>123.975 *121.35</b> *when tower closed
------------------------	---------------------------------------	---	---------------------------------	--

SE-3, 22 OCT 2009 to 19 NOV 2009

SE-3, 22 OCT 2009 to 19 NOV 2009



CATEGORY	A	B	C	D
CIRCLING	600-1	545 (600-1)	600-1½ 545 (600-1½)	620-2 565 (600-2)

MIRL Rwy 18-36  
HIRL Rwy 9L-27R and 9R-27L  
MIRL Rwsy 9C-27C  
REIL Rwsy 9C, 18, 27L and 36

ORLANDO, FLORIDA  
Orig 09015

28°47'N - 81°14'W

ORLANDO SANFORD INTL (SFB)  
**NDB-B**