

ILS or LOC RWY 9L

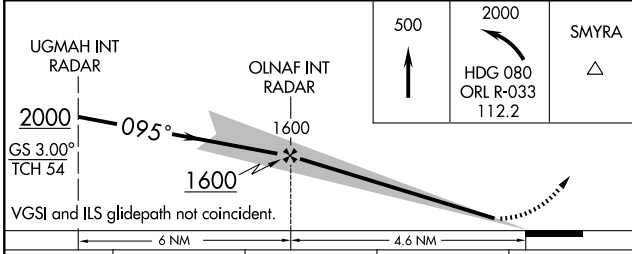
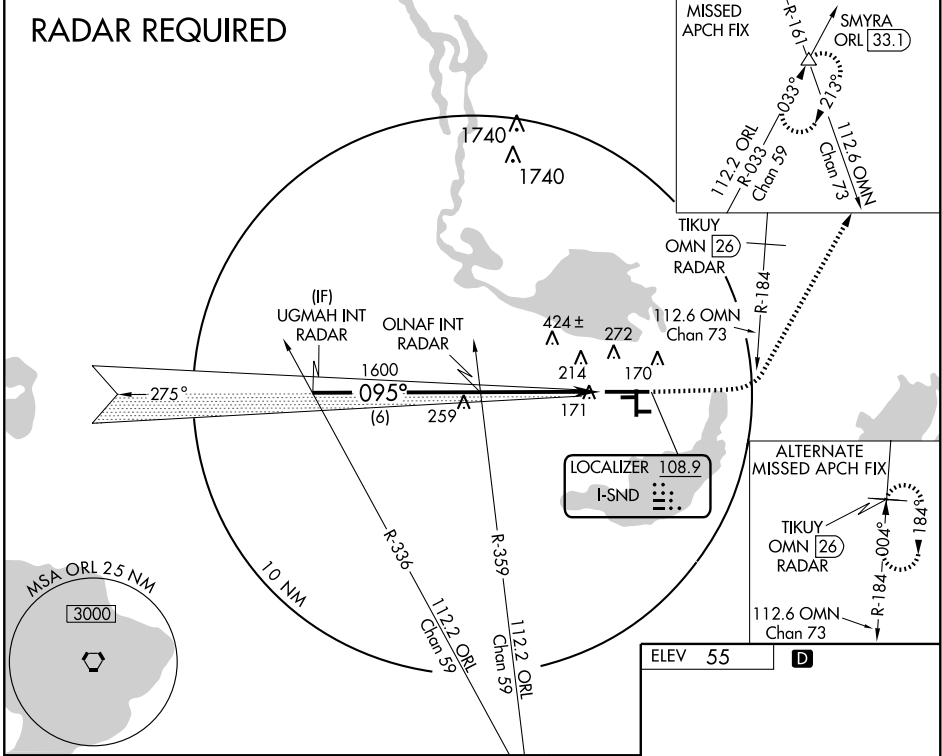
ORLANDO SANFORD INTL (SF'B)

| | | |
|---------------------------|------------------------|---|
| LOC I-SND 108.9 | APP CRS 095° | Rwy ldg 8600 TDZE 55 Apt Elev 55 |
|---------------------------|------------------------|---|

When local altimeter setting not received, use Executive altimeter setting and increase ILS DA to 298, all MDA 60 feet, and S-LOC 9L Cat. C visibility 1/4 mile. Simultaneous approach authorized with Rwy 9R. LOC procedure NA during simultaneous operations.

MALSR MISSED APPROACH: Climb to 500 then climbing left turn to 2000 via heading 080° and ORL VORTAC R-033 to SMYRA INT/ORL 33.1 DME and hold.

| | | | | |
|------------------------|---------------------------------------|---|---------------------------------|--|
| ATIS 125.975 | ORLANDO APP CON 121.1 351.9 | SANFORD TOWER★ 120.3(CTAF) 381.65 | GND CON 121.35 381.65 | CLNC DEL 123.975 *121.35 *when tower closed |
|------------------------|---------------------------------------|---|---------------------------------|--|



| | |
|-----------------------------|--------------------------|
| ELEV 55 | D |
| 095° 4.6 NM from FAF | 79± |
| TDZE 55 | 81 |
| 9600 X 150 | 66± |
| 117± | 27C |
| 185 | 6002 X 150 |
| 3578 X 75 | 161 |
| 36 | 6647 X 75 |
| 101± | 27L |
| MIRL Rwy 18-36 | |
| MIRL Rwy 9C-27C | |
| HIRL Rwy 9L-27R and 9R-27L | |
| REIL Rwy 9C, 18, 27L and 36 | |
| FAF to MAP 4.6 NM | |
| Knots | 60 90 120 150 180 |
| Min:Sec | 4:36 3:04 2:18 1:50 1:32 |

| CATEGORY | A | B | C | D |
|----------|-----------------------|---|---|---|
| S-ILS 9L | 255-1/2 200 (200-1/2) | | | |
| S-LOC 9L | 400-1/2 345 (400-1/2) | | 400-3/4 345 (400-3/4) | |
| CIRCLING | 580-1 525 (600-1) | | 580-1/2 620-2 525 (600-1/2) 565 (600-2) | |

SE-3, 22 OCT 2009 to 19 NOV 2009

SE-3, 22 OCT 2009 to 19 NOV 2009