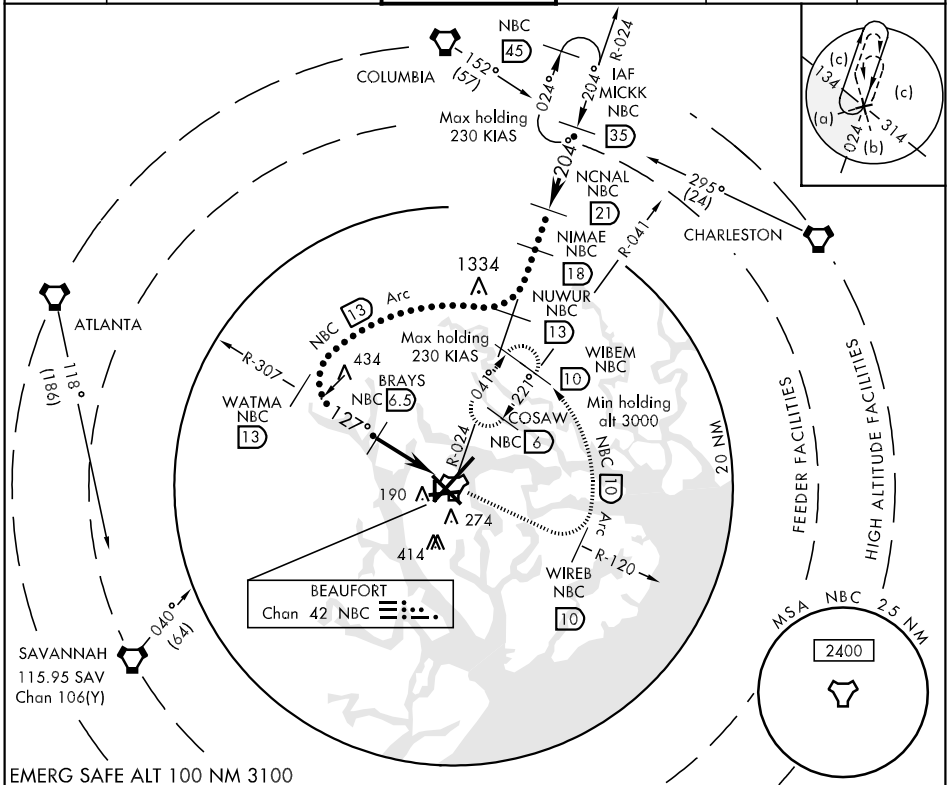


TACAN NBC Chan <b>42</b>	APCH CRS <b>127°</b>	Rwy Idg <b>7999</b> TDZE <b>32</b> Arpt Elev <b>37</b>	JAL-91.6 [USN]	BEAUFORT MCAS (MERRITT FLD) (KNBC)
-----------------------------	-------------------------	--	----------------	------------------------------------

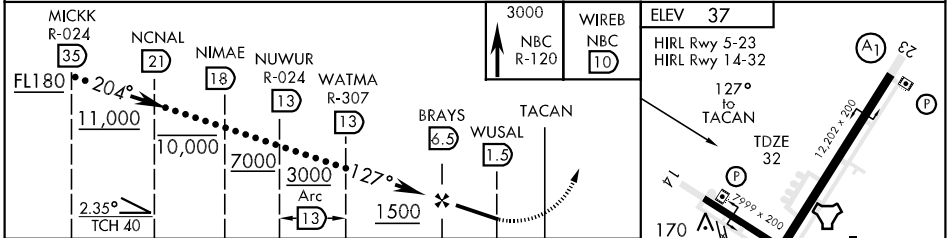
MISSED APPROACH: Climb to 3000 on NBC TACAN R-120 to NBC 10 DME (WIREB), arc E of NBC TACAN via 10 mile arc to NBC R-041/10 DME (WIBEM), then via NBC R-041 to 6 DME (COSAW) and hold.

ATIS ★ <b>256.15</b>	BEAUFORT APP CON (ABV 3000) <b>118.45 292.125</b> (3000 and BLW) <b>123.7 328.425</b>	BEAUFORT TOWER ★ <b>119.05 342.875</b>	GND CON <b>128.15 348.625</b>	CLNC DEL <b>128.15 348.625</b>	ASR/PAR
-------------------------	---	---	----------------------------------	-----------------------------------	---------



SE-2, 22 OCT 2009 to 19 NOV 2009

SE-2, 22 OCT 2009 to 19 NOV 2009



CATEGORY	C	D	E
S-14	420-1 388 (400-1)	420-1½ 388	(400-1½)
CIRCLING	500-1½ 463 (500-1½)	600-2 563 (600-2)	720-2½ 683 (700-2½)
S-PAR 14	132-½	100 (100-½)	GS 3.0°

