


RNAV (GPS) RWY 31

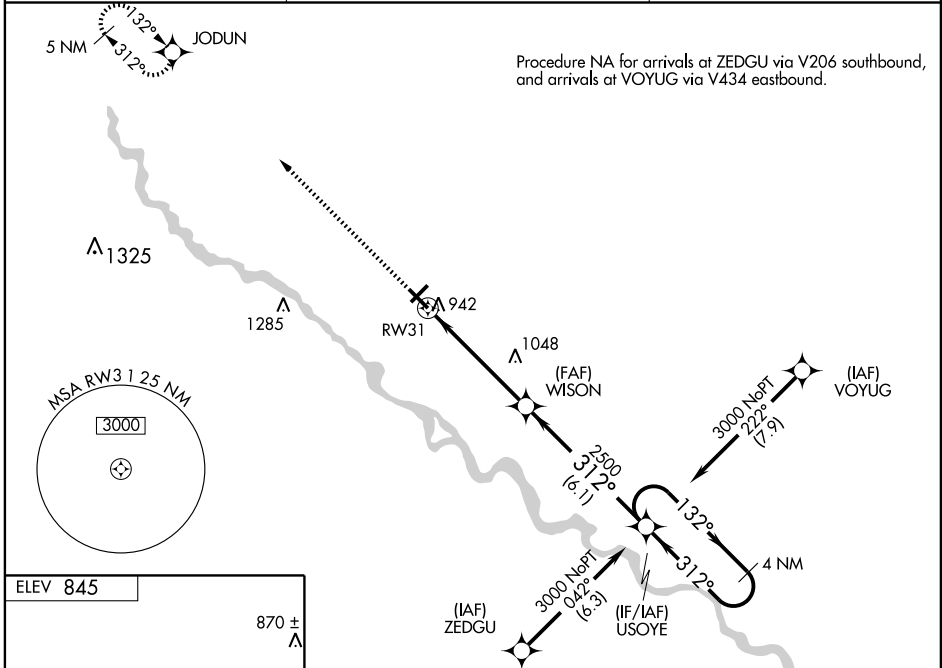
OTTUMWA RGNL (OTM)

WAAS CH 93611 W31A	APP CRS 312°	Rwy Idg TDZE Apt Elev	5885 841 845
--	------------------------	-----------------------------	---

▼ For uncompensated Baro-VNAV systems, procedure NA below -16°C (4°F) or above 54°C (130°F). DME/DME RNP-0.3 NA.
▲ Baro-VNAV and VDP NA when using Fairfield altimeter setting. When local altimeter setting not received, use Fairfield altimeter setting and increase all DA 56 feet and all MDA 60 feet. Increase LNAV/VNAV all cats and LNAV Cat C ¼ mile.
 For inoperative MALSRS when using Fairfield altimeter setting, increase LPV all Cats visibility to 1 mile.

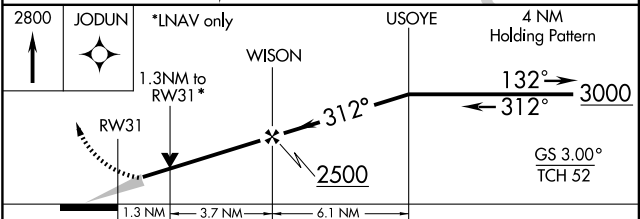
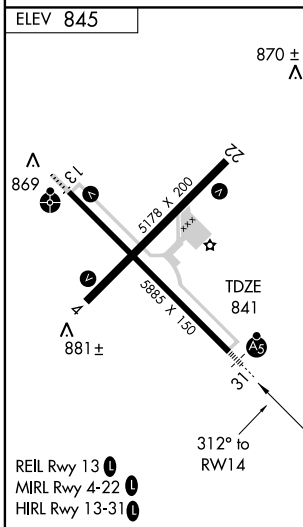
MALSRS

MISSED APPROACH: Climb to 2800 direct JODUN and hold.

ASOS 124.175	CHICAGO CENTER 118.15 354.1	UNICOM 123.0 (CTAF) 
------------------------	---------------------------------------	---



NC-3, 22 OCT 2009 to 19 NOV 2009

NC-3, 22 OCT 2009 to 19 NOV 2009



CATEGORY	A	B	C	D
LPV DA	1091-½ 250 (300-½)			NA
LNAV/DA VNAV	1192-¾ 351 (400-¾)			NA
LNAV MDA	1300-½ 459 (500-½)		1300-¾ 459 (500-¾)	NA
CIRCLING	1300-1 455 (500-1)		1300-1½ 455 (500-1½)	NA