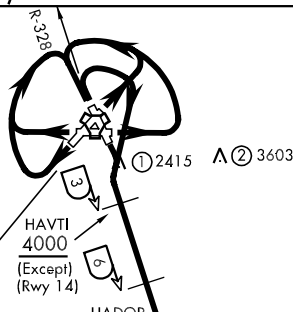


# CHINA-FOUR LO DEPARTURE (CHINA 4•CHINA)

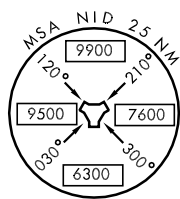
SL-914 [USN]

CHINA LAKE NAWS (ARMITAGE FIELD) (KNID)  
RIDGECREST, CALIFORNIA

ATIS ★ 322.375  
CLNC DEL  
274.7  
GND CON  
360.2  
CHINA LAKE TOWER ★  
120.15 340.2  
JOSHUA DEP CON  
133.65 348.7



CHINA LAKE  
Chan 53 NID



EDWARDS  
116.4 EDW  
Chan 111  
L-7

HECTOR  
112.7 HEC  
Chan 74  
L-7

- ① 145° 0.9 NM from DER 14
- ② 082° 5.4 NM from DER 21
- 087° 5.3 NM from DER 26
- 099° 4.6 NM from DER 3
- 099° 5.0 NM from DER 32
- 091°T 4.0 NM from DER 8

Rwy		Knots	60	120	180	240
* 3	(C)(C)	V/V(fpm)	360	720	1080	1440
* 3	(b)(d)	V/V(fpm)	400	800	1200	1600
* 8	(C)(E)	V/V(fpm)	390	780	1170	1560
* 8	(b)(f)	V/V(fpm)	450	900	1350	1800
* 14	(C)(E)	V/V(fpm)	250	500	750	1000
* 14	(b)(h)	V/V(fpm)	260	520	780	1040
* 21	(C)(f)	V/V(fpm)	300	600	900	1200
* 21	(b)(f)	V/V(fpm)	330	600	990	1320
* 26	(C)(f)	V/V(fpm)	310	620	930	1240
* 26	(b)(f)	V/V(fpm)	340	680	1020	1360
* 32	(C)(f)	V/V(fpm)	330	660	990	1320
* 32	(b)(f)	V/V(fpm)	370	740	1110	1480
† 14	(f)	V/V(fpm)	730	1460	2190	2920

\* Minimum † ATC Climb Rate  
 (C) Military (b) Civil (C) to 4700 (d) to 4900  
 (e) to 3800 (f) to 4100 (g) to 3300 (h) to 3400  
 (i) to 3900 (j) to 6000 Not for Civil use.

SW-3, 22 OCT 2009 to 19 NOV 2009

SW-3, 22 OCT 2009 to 19 NOV 2009

## DEPARTURE ROUTE DESCRIPTION

- TAKE-OFF RWY 3:** Climb to 2700 via heading 029°, then climbing left turn within 4 DME to intercept R-328 direct NID TACAN and proceed via R-148 to CHINA. Thence.....
- TAKE-OFF RWY 8:** Climb to 2700 via heading 077°, then climbing left turn within 4 DME to intercept R-328 direct NID TACAN and proceed via R-148 to CHINA. Thence .....
- TAKE-OFF RWY 21:** Climb to 2700 via heading 209°, then climbing right turn within 4 DME to intercept R-328 direct NID TACAN and proceed via R-148 to CHINA. Thence .....
- TAKE-OFF RWY 26:** Climb to 2700 via heading 257°, then climbing right turn within 4 DME to intercept R-328 direct NID TACAN and proceed via R-148 to CHINA. Thence.....
- TAKE-OFF RWY 32:** Climb to 2700 via heading 321°, then climbing right turn within 3 DME to intercept R-148 to CHINA. Thence.....

(CONTINUED ON NEXT PAGE)

# CHINA-FOUR LO DEPARTURE (CHINA 4•CHINA)

RIDGECREST, CALIFORNIA  
CHINA LAKE NAWS (ARMITAGE FIELD) (KNID)