

# RNAV (GPS) RWY 17

HOBART RGNL (HBR)

APP CRS <b>173°</b>	Rwy Idg <b>5507</b>
	TDZE <b>1553</b>
	Apt Elev <b>1564</b>

**⚠** For uncompensated BARO-VNAV systems, LNAV/VNAV NA below -18°C (0°F) or above 45°C (113°F). DME/DME RNP-0.3 NA. When local altimeter setting not received, use Altus/Quartz Mountain Rgnl altimeter setting and increase LNAV/VNAV DA to 1971 feet and all visibilities ¼ mile; increase all MDAs 80 feet, LNAV Cat C and D visibility ¼ mile. VDP and BARO-VNAV NA when using Altus/Quartz Mountain Rgnl altimeter setting.

**MISSED APPROACH:** Climb to 4000 direct DOMLE and hold.

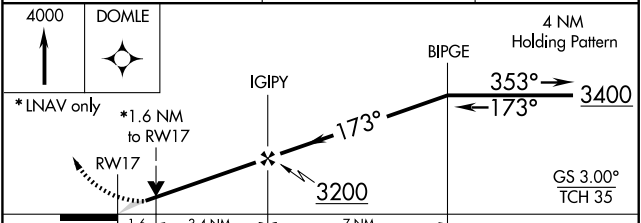
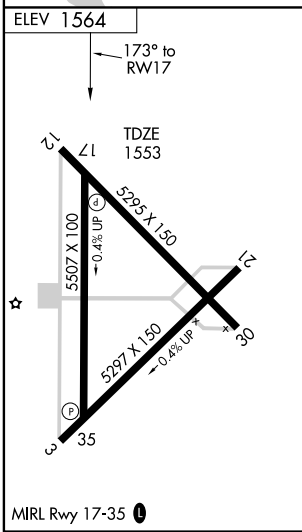
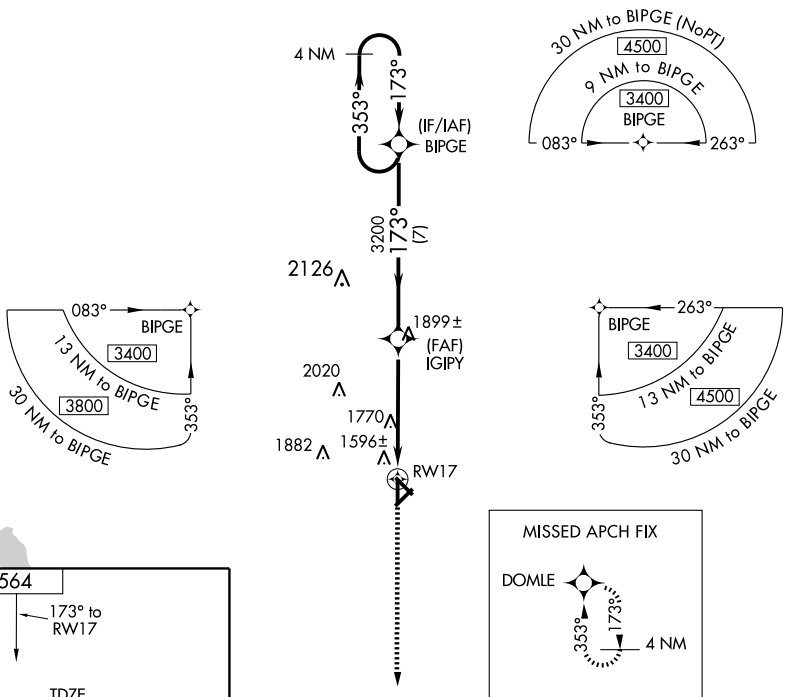
ASOS  
**133.325**

ALTUS APP CON ★  
**125.1 257.725**

UNICOM  
**122.8 (CTAF) 0**

SC-1, 22 OCT 2009 to 19 NOV 2009

SC-1, 22 OCT 2009 to 19 NOV 2009



CATEGORY	A	B	C	D
LNAV/VNAV DA	1900-1 ¼ 347 (400-1 ¼)			
LNAV MDA	2080-1	527 (600-1)	2080-1 ½ 527 (600-1 ½)	2080-1 ¾ 527 (600-1 ¾)
CIRCLING	2080-1	516 (600-1)	2080-1 ½ 516 (600-1 ½)	2120-2 556 (600-2)