

MILLINGTON, TENNESSEE


AL-910 (FAA)

# VOR/DME or TACAN RWY 22

MILLINGTON RGNL JETPORT (NQA)

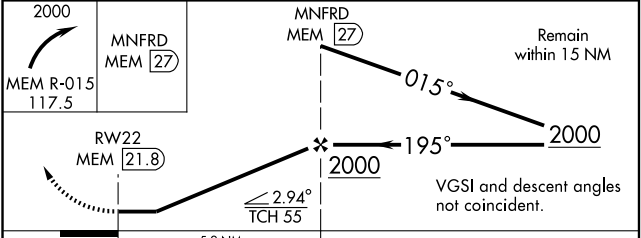
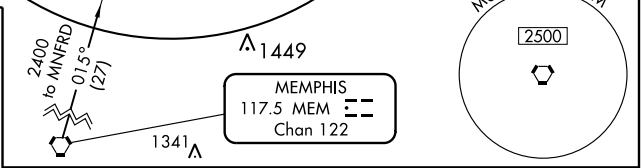
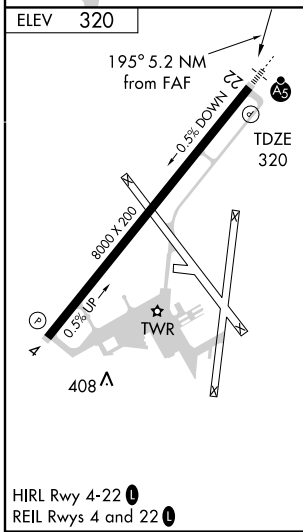
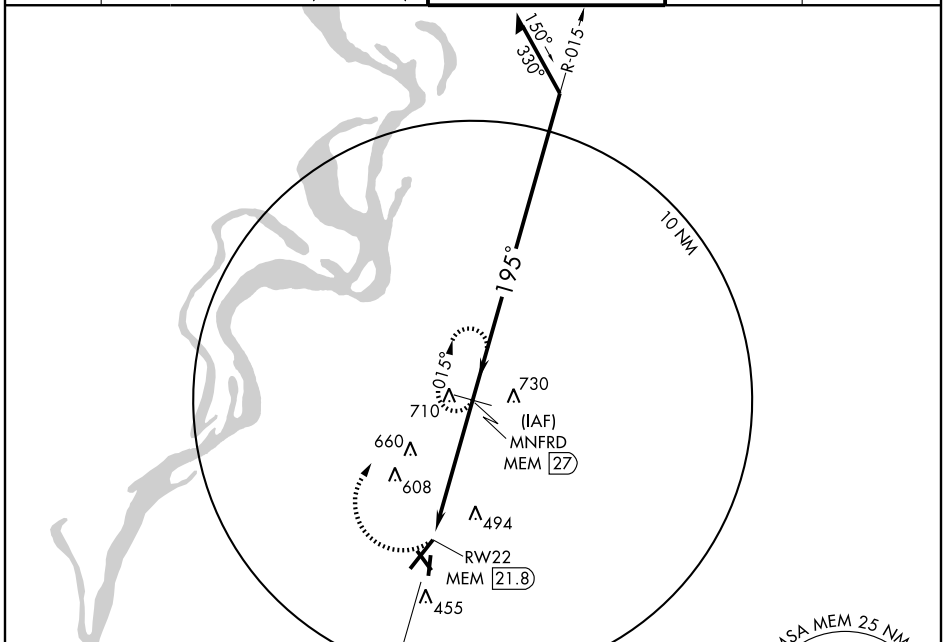
VORTAC MEM <b>117.5</b> Chan <b>122</b>	APP CRS <b>195°</b>	Rwy Idg <b>8000</b> TDZE <b>320</b> Apt Elev <b>320</b>
---	------------------------	---

**⚠** Inoperative table does not apply.  
If local altimeter setting not received, use Memphis altimeter setting and increase all MDAs 60 feet.

**MALSR** 

**MISSED APPROACH:** Climbing right turn to 2000 via MEM VORTAC R-015 to MNFRD/27 DME and hold.

AWOS-3 <b>118.925</b>	MEMPHIS APP CON <b>119.1 291.6</b> (176°-355°) <b>121.0 125.8 338.3</b> (356°-175°)	MILLINGTON TOWER * <b>120.25</b> (CTAF) <b>340.2</b>	GND CON <b>121.375</b>	UNICOM <b>122.95</b>
--------------------------	---	---	---------------------------	-------------------------



CATEGORY	A	B	C	D	E
S-22	960-1 640 (700-1)	960-1¼ 640 (700-1¼)	960-1¾ 640 (700-1¾)	960-2 640 (700-2)	960-2¼ 640 (700-2¼)
CIRCLING	960-1 640 (700-1)	960-1¼ 640 (700-1¼)	960-1¾ 640 (700-1¾)	960-2 640 (700-2)	1020-2½ 700 (700-2½)

MILLINGTON, TENNESSEE  
Amdt 2A 09127

MILLINGTON RGNL JETPORT (NQA)  
35°21'N-89°52'W **VOR/DME or TACAN RWY 22**

SE-1, 22 OCT 2009 to 19 NOV 2009

SE-1, 22 OCT 2009 to 19 NOV 2009