

RNAV (GPS) RWY 22

MILLINGTON RGNL JETPORT (NQA)

WAAS CH 86212 W22A	APP CRS 219°	Rwy Idg TDZE 320 Apt Elev 320	8000
--	------------------------	---	-------------

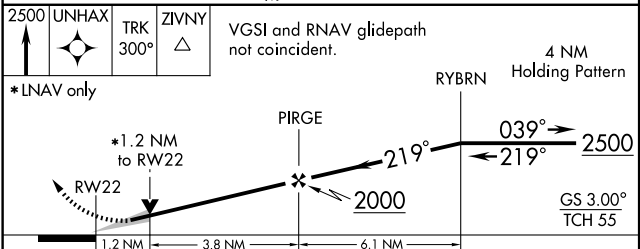
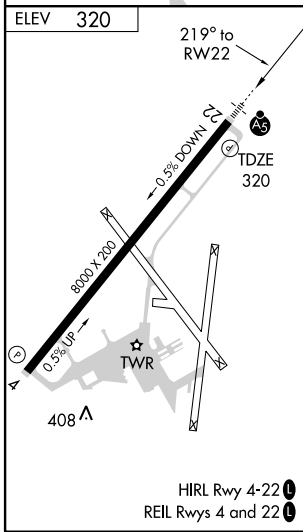
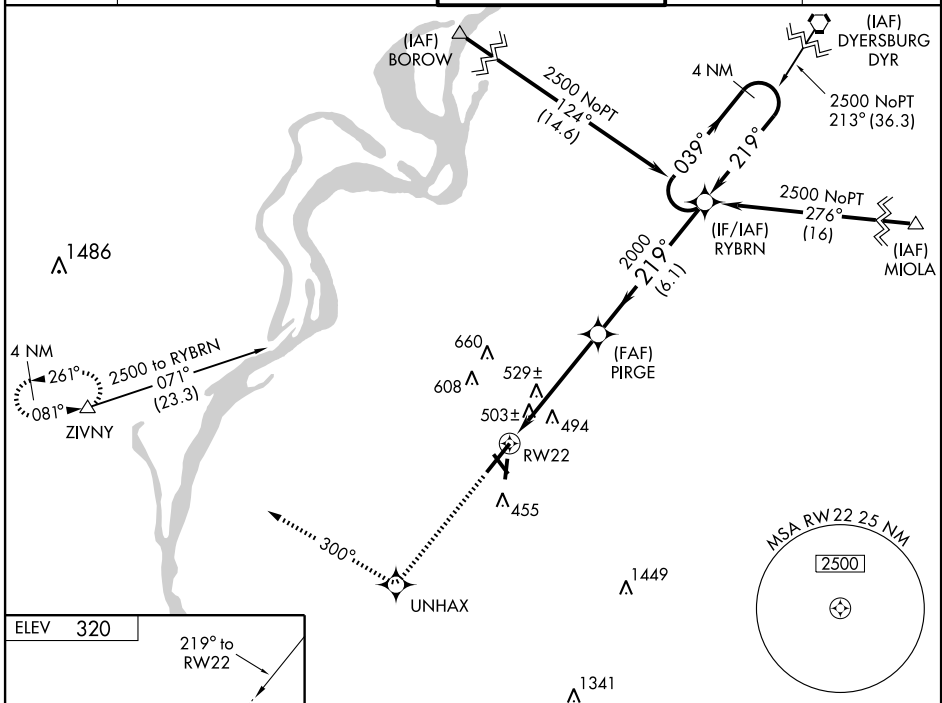
For inoperative MALSR, increase LPV Cat E visibility to 3/4, LNAV/VNAV Cat. E visibility to 1 3/4 and LNAV Cat. E visibility to 1 1/2. If local altimeter setting not received, use Memphis altimeter setting and increase all DAs/MDAs 60 feet. For uncompensated Baro-VNAV systems, LNAV/VNAV NA below -15°C (5°F) or above 48°C (118°F). Baro-VNAV and VDP NA when using Memphis altimeter setting. DME/DME RNP-0.3 NA.

MALSR



MISSED APPROACH:
Climb to 2500 direct UNHAX and via 300° track to ZIVNY and hold.

AWOS-3 118.925	MEMPHIS APP CON 119.1 291.6 (176°-355°) 121.0 125.8 338.3 (356°-175°)	MILLINGTON TOWER ★ 120.25 (CTAF) 340.2	GND CON 121.375	UNICOM 122.95
--------------------------	---	---	---------------------------	-------------------------



CATEGORY	A	B	C	D	E
LPV DA	570-1/2		250 (300-1/2)		
LNAV/VNAV DA	795-1 1/4 475 (500-1 1/4)				
LNAV MDA	780-1/2	460 (500-1/2)	780-3/4 460 (500-3/4)	780-1	460 (500-1)
CIRCLING	820-1	500 (500-1)	820-1 1/2 500 (500-1 1/2)	880-2 560 (600-2)	1020-2 1/2 700 (700-2 1/2)

SE-1, 22 OCT 2009 to 19 NOV 2009

SE-1, 22 OCT 2009 to 19 NOV 2009