

SANFORD, MAINE

AL-909 (FAA)

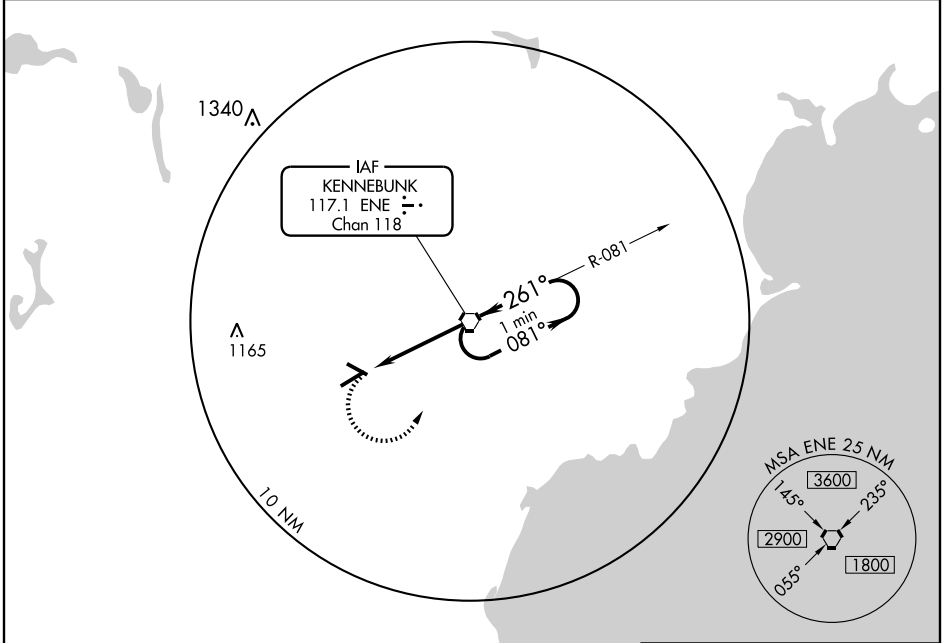
VORTAC ENE 117.1 Chan 118	APP CRS 261°	Rwy Idg TDZE 234 Apt Elev 244	6000
---	------------------------	---	-------------

VOR RWY 25

SANFORD RGNL (SFM)

NA		MISSED APPROACH: Climbing left turn to 2000 direct ENE VORTAC and hold.
-----------	--	---

AWOS-3 120.025	PORTLAND APP CON * 119.75 381.2	CLNC DEL 121.725	UNICOM 123.075 (CTAF) 0
--------------------------	---	----------------------------	--

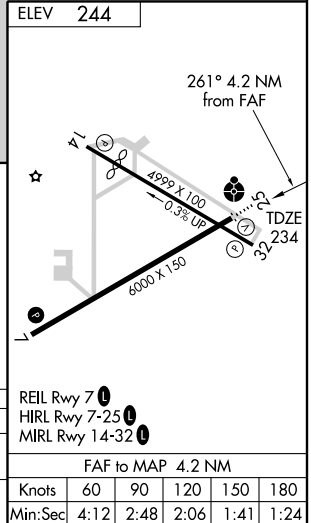


NE-1, 22 OCT 2009 to 19 NOV 2009

NE-1, 22 OCT 2009 to 19 NOV 2009



2000	ENE 117.1	VORTAC	One Minute Holding Pattern
			081° → 2000
			← 261°
	ENE 4.2		261°
			3.17° TCH 59
			4.2 NM



CATEGORY	A	B	C	D
S-25	600-1	366 (400-1)		600-1½ 366 (400-1½)
CIRCLING	740-1	496 (500-1)	740-1½ 496 (500-1½)	860-2 616 (700-2)

ELEV	244
REIL Rwy 7	0
HIRL Rwy 7-25	0
MIRL Rwy 14-32	0
FAF to MAP 4.2 NM	
Knots	60 90 120 150 180
Min:Sec	4:12 2:48 2:06 1:41 1:24

SANFORD, MAINE
Amdt 13C 09295

43°24'N - 70°42'W

VOR RWY 25

SANFORD RGNL (SFM)