

COTULLA, TEXAS

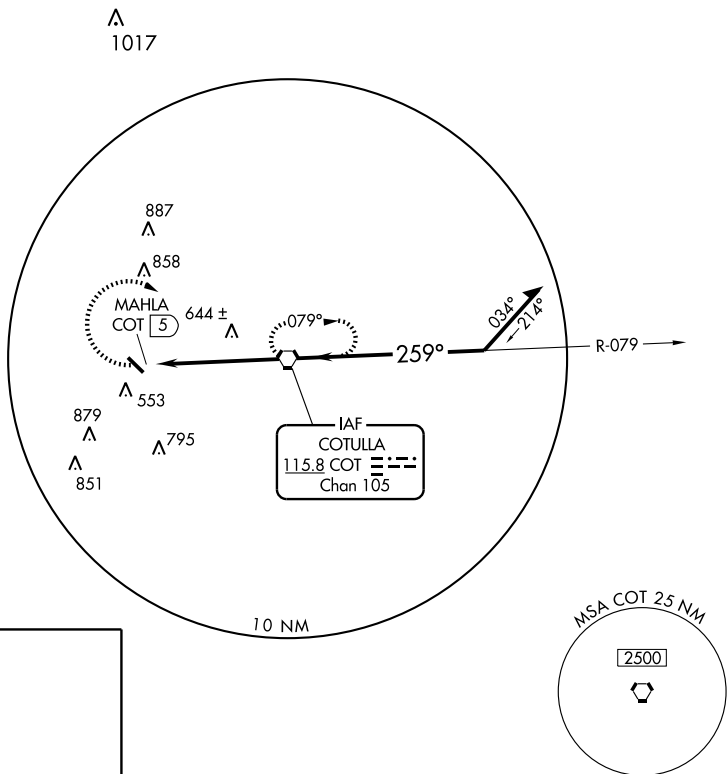
AL-907 (FAA)

VORTAC COT 115.8 Chan 105	APP CRS 259°	Rwy Idg TDZE Apt Elev N/A N/A 474
---	------------------------	---

VOR-A
COTULLA-LA SALLE COUNTY (COT)

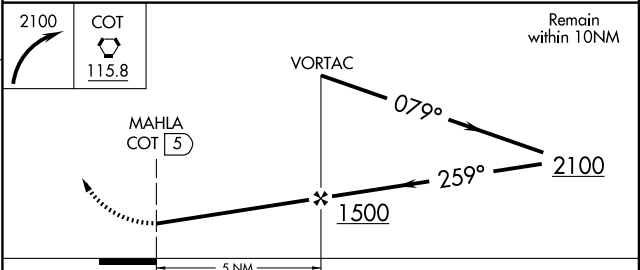
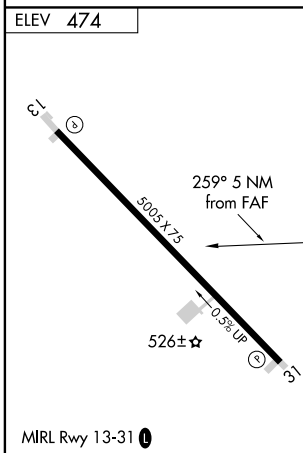
▽ If local altimeter setting not received, use Pleasanton Muni altimeter setting and increase all MDAs 120 feet.	▲ MISSED APPROACH: Climbing right turn to 2100 direct COT VORTAC and hold.
---	---

ASOS 118.32	HOUSTON CENTER 134.6 322.5	UNICOM 122.7 (CTAF) 0
-----------------------	--------------------------------------	---------------------------------



SC-3, 22 OCT 2009 to 19 NOV 2009

SC-3, 22 OCT 2009 to 19 NOV 2009



FAF to MAP 5 NM					
Knots	60	90	120	150	180
Min:Sec	5:00	3:20	2:30	2:00	1:40
CATEGORY	A	B	C	D	
CIRCLING	900-1 426 (500-1)	940-1 466 (500-1)	940-1½ 466 (500-1½)	NA	

COTULLA, TEXAS
Amdt 13 08101

28°27'N-99°13'W

COTULLA-LA SALLE COUNTY (COT)
VOR-A