

FORT HOOD, TEXAS

# VOR/DME RWY 15

VOR/DME GRK **111.8**  
Chan **55**

APCH CRS **152°**

Rwy ldg **10,000**  
TDZE **1019**  
Arpt Elev **1015**

AL-906 [USA]

ROBERT GRAY AAF (KGRK)

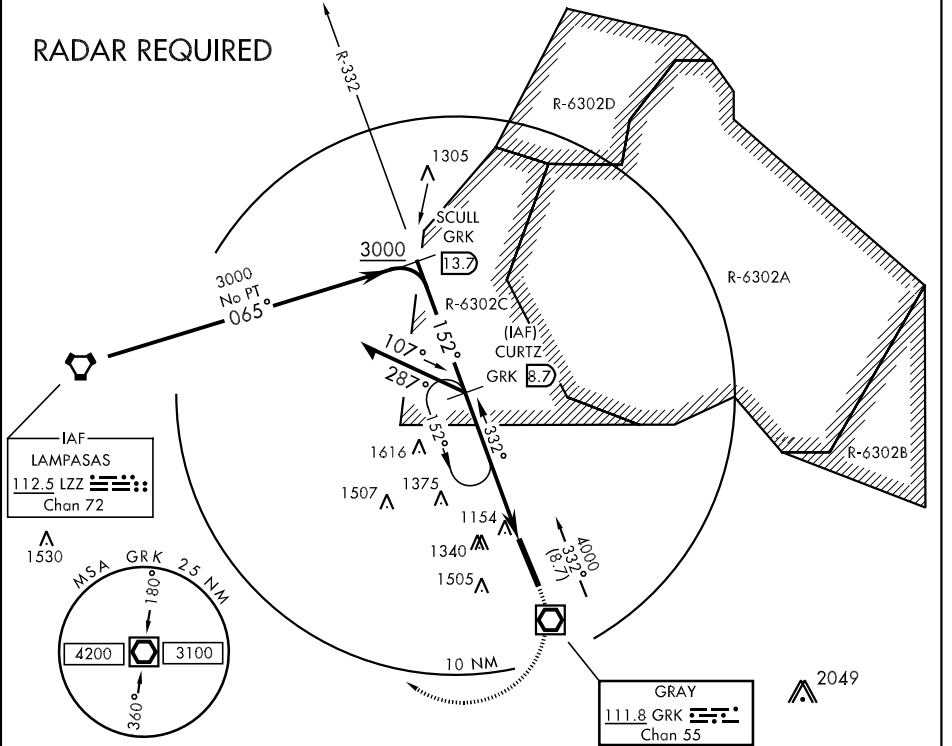
**V** \*Circling not authorized W of Rwy 15-33.  
**A** NA \*\* When ALS inop, increase CAT AB RVR to 40.



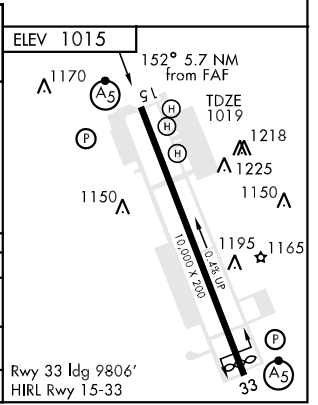
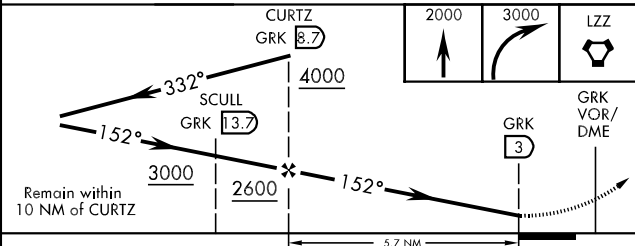
MISSED APPROACH: Climb to 2000, then climbing right turn to 3000, direct LZZ VORTAC.

ATIS <b>124.9</b>	GRAY APP CON <b>120.075 323.15</b>	GRAY TOWER <b>120.75 285.5</b>	GND CON <b>126.2 279.5</b>	CLNC DEL <b>121.8 251.1</b>	ASR/PAR
----------------------	---------------------------------------	-----------------------------------	-------------------------------	--------------------------------	---------

## RADAR REQUIRED



CAT E Restrictions: Procedure turn not authorized.



CATEGORY	A	B	C	D	E
S-15	1520/40	501 (600-¾)	1520/60	501 (600-1¼)	1520-1½ 501(600-1½)
CIRCLING *	1520-1	501 (600-1)	1560-1½ 541 (600-1½)	1580-2 561 (600-2)	1740-2½ 721(800-2½)
S-PAR 15**	1219/24	200 (200-½)	1219/40	200 (200-¾)	GS 3.0°

FORT HOOD, TEXAS  
Amdt 2A 09267

31° 04'N-97° 50'W

ROBERT GRAY AAF (KGRK)

# VOR/DME RWY 15

SC-3, 22 OCT 2009 to 19 NOV 2009

SC-3, 22 OCT 2009 to 19 NOV 2009