

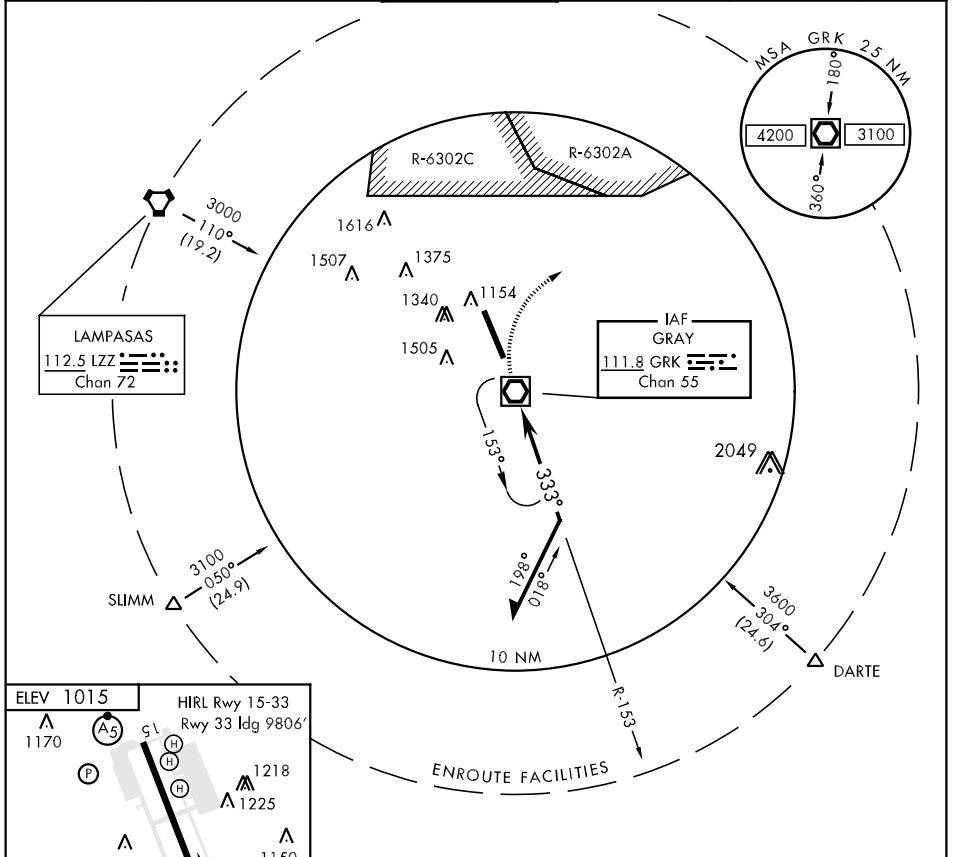
FORT HOOD, TEXAS

VOR-A

VOR/DME GRK <b>111.8</b> Chan <b>55</b>	APCH CRS <b>333°</b>	Rwy ldg TDZE NA NA Arpt Elev <b>1015</b>	AL-906 [USA]	ROBERT GRAY AAF (KGRK)
---	-------------------------	---	--------------	------------------------

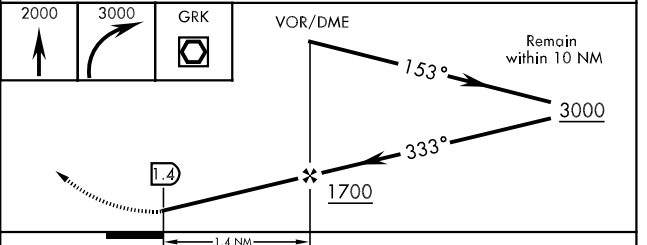
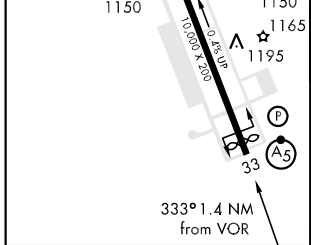
▼ \* Circling not authorized W of Rwy 15-33. MISSED APPROACH: Climb to 2000, then climbing right turn to 3000 direct GRK VOR/DME and hold.

ATIS <b>124.9</b>	GRAY APP CON <b>120.075 323.15</b>	GRAY TOWER <b>120.75 285.5</b>	GND CON <b>126.2 279.5</b>	CLNC DEL <b>121.8 251.1</b>	ASR/PAR
----------------------	---------------------------------------	-----------------------------------	-------------------------------	--------------------------------	---------



SC-3, 22 OCT 2009 to 19 NOV 2009

SC-3, 22 OCT 2009 to 19 NOV 2009



FAF to MAP 1.4 NM						
Knots	60	90	120	150	180	
Min:Sec	1:24	0:56	0:42	0:34	0:28	
CATEGORY	A		B		C	D
CIRCLING *	1520-1 501		(600-1)		1560-1½ 541	1580-2 561 (600-2)

FORT HOOD, TEXAS  
Amdt 1B 09267

31° 04'N-97° 50'W

ROBERT GRAY AAF (KGRK)

VOR-A